



BEDROOMS <b>3</b>	BATHROOMS <b>2</b>	RECEPTION ROOMS	COUNCIL TAX <b>D</b>
----------------------	-----------------------	-----------------	-------------------------

### KEY FEATURES

- Attractive Miller Homes detached property in a sought after cul de sac
- Three generous double bedrooms, including a stylish primary suite with ensuite
- Spacious front facing lounge with bay window
- Immaculately presented accommodation with a modern, move in ready feel
- Handy ground floor WC
- Driveway parking and an integral garage
- Private, enclosed South West facing rear garden that is minimally overlooked
- Early viewing strongly recommended

### PROPERTY OVERVIEW

Creightons Estate Agents are delighted to present this attractive three bedroom detached home, built by Miller Homes in December 2013 and tucked away on the peaceful Wattle Close in Sileby. Offering modern, well planned accommodation and positioned within a quiet cul de sac of similar quality homes, this property provides an ideal setting for families or couples seeking a move in ready home with excellent access to village amenities, countryside walks and transport links.

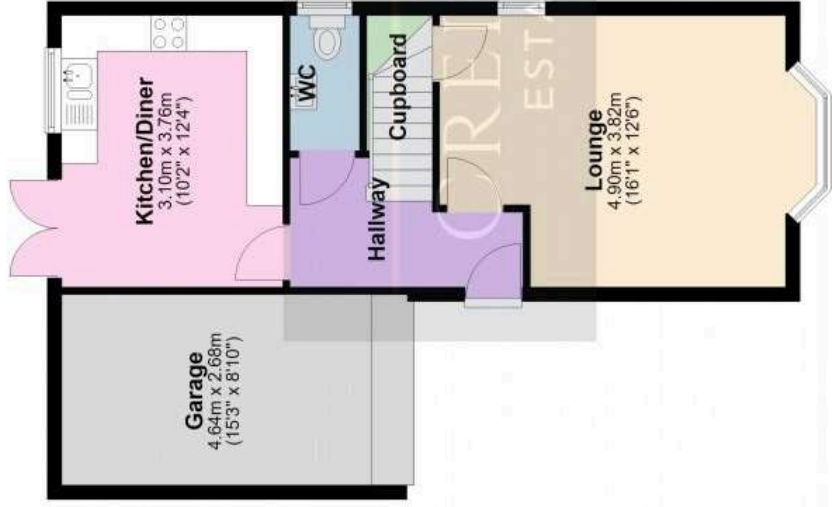
### ADDITIONAL PHOTOGRAPHY



# FLOORPLAN

## Ground Floor

Approx. 51.7 sq. metres (556.1 sq. feet)



## First Floor

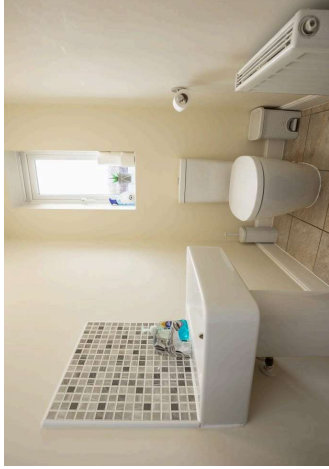
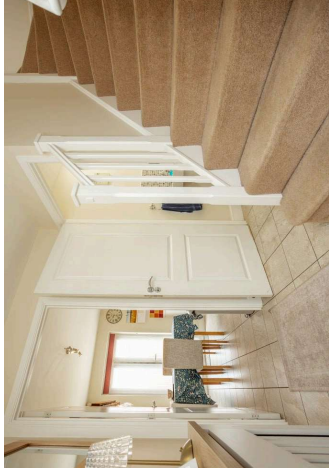
Approx. 49.7 sq. metres (535.1 sq. feet)



Total area: approx. 101.4 sq. metres (1091.3 sq. feet)

Floor plans are not to scale and are intended for use as a guide to the layout of the property only. They should not be used for any other purpose. Plan produced using PlanUp.

**19 Wattle Close, Sibley**



No EPC image found.



ROTHLEY OFFICE

0116 3195657

SIBLEY OFFICE

01509 458 333

WEBSITE

[creightonsestateagents.co.uk](http://creightonsestateagents.co.uk)