



Price

£240,000

Leasehold

2x 🛏️ 1x 🚿 2x 🚗

Surrey House, High
Street, Cranleigh,
Surrey, GU6

OVER 60?

Secure this property
for up to **59% less!**

cubitt & west
Helping you move forwards



Main features

- Generous split-level maisonette with versatile accommodation
- Recently refurbished including a stylish new kitchen and bathroom
- Prime High Street location, moments from shops, cafés and restaurants
- Lovely outlook with views across Cranleigh Common

Accommodation

FIRST FLOOR

Entrance Hallway

Lounge: 16'5 x 14'4 (5.01m x 4.37m)

Dining Area: 16'4 x 11'2 (4.98m x 3.41m)

Kitchen: 7'4 x 6'1 (2.24m x 1.86m)

Bathroom

SECOND FLOOR

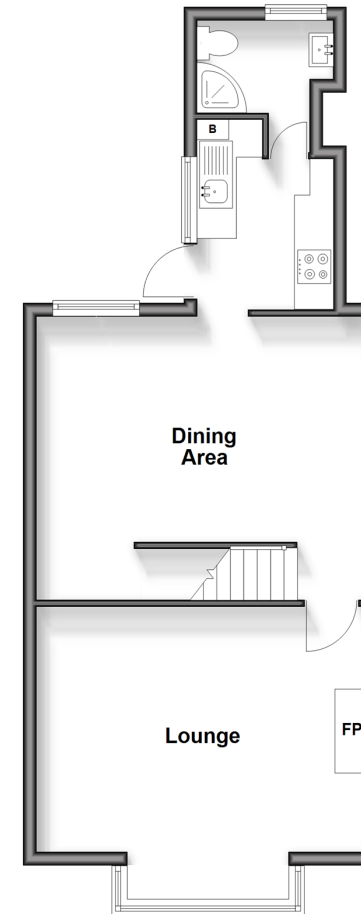
Landing

Bedroom 1: 15'7 x 11'3 (4.75m x 3.43m)

Bedroom 2: 11'9 x 10'9 (3.58m x 3.28m)

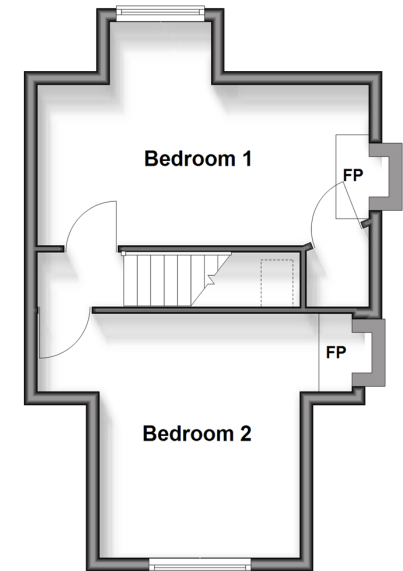
Split Level First Floor

Approx. 49.6 sq. metres (533.7 sq. feet)



Second Floor

Approx. 31.6 sq. metres (339.9 sq. feet)



Call Cranleigh - 01483 271567 ■ cubittandwest.co.uk

- Legal advice should be taken to verify fixtures/fittings, planning, alterations and/or lease details
- Appliances & services are untested, dimensions are approximate and floor plans are not to scale
- Through a Homewise Home For Life Plan people aged 60+ can secure this property for up to 50% less, by purchasing a Lifetime Lease.



20306886/20250829/CH/KAB