

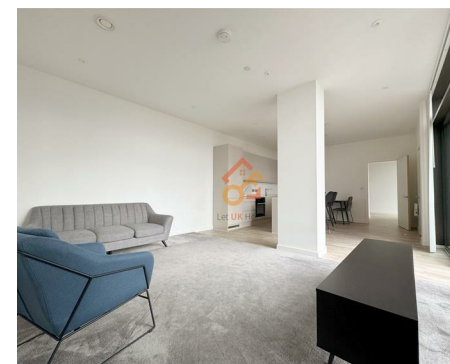
Let **UK** Home

2 Bedrooms

Flat

Located in Salford

£460,000



info@letukhome.co.uk

<https://www.letukhome.co.uk/>

01795 358 886



55 Queen Street Salford

M3 7GY



Let UK Home are excited to offer this stunning 2-bedroom in FiftyFive situated in the heart of Salford and Manchester.

This property comprises a large bright open plan kitchen and living room, two double bedrooms(master en-suite), a large family sized bathroom and ample storage.

FiftyFive boasts an abundance of exceptional amenities which contribute to the luxury experience available, helping to create a community feel amongst residents. Residents will have access to the state-of-the-art private gymnasium is fully equipped with high-end equipment. In addition to this, there is a variety of communal areas too such as the wonderful roof terrace which presents unrivalled views across the city.

Located at 55 Queen Street in the Blackfriars area of Salford, this apartment community offers an exceptional location with easy access to both Salford and Manchester city centres. One of the notable advantages of 55 Queen Street is its proximity to popular attractions and amenities. Just a few minutes walk away is the Arndale and Manchester city centre shopping district, providing a wide range of shopping options for residents to explore. Additionally, the community is directly next to the well-known Black Friar Pub and Local Blackfriars, offering a convenient and vibrant social scene right at your doorstep.

Residents of 55 Queen Street enjoy convenient access to transportation options for easy commuting and travel. The Salford Central train station is just a short walk away, providing excellent connectivity to various destinations.

55 Queen Street Salford

£460,000 Leasehold

- 16th & 17th Floor
- 24h Security
- Cinema & Game Room
- Co-working Space
- Bike Storage

- Concierge Service
- The Gym
- Residents Lounge
- Yoga Room





Let **UK** Home

3F 2 Eastbourne Terrace
Paddington
London
W2 6LG

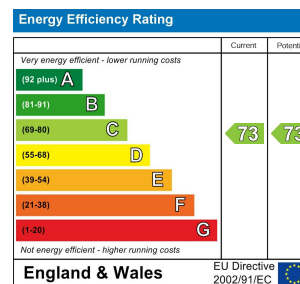
01795 358 886

info@letukhome.co.uk

Council Tax Band: D

Local Authority:

Agents Note: Whilst every care has been taken to prepare these particulars, they are for guidance purposes only. All measurements are approximate and are for general guidance purposes only and whilst every care has been taken to ensure their accuracy, they should not be relied upon and potential buyers/tenants are advised to recheck the measurements.



<https://www.letukhome.co.uk/>