



Shearwater Drive, NW9

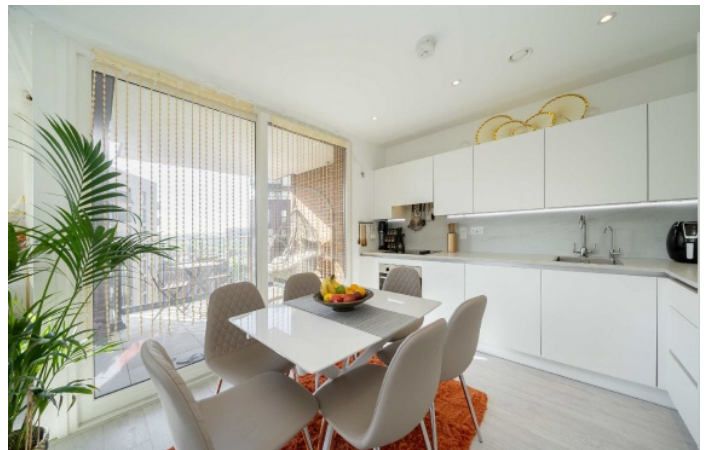
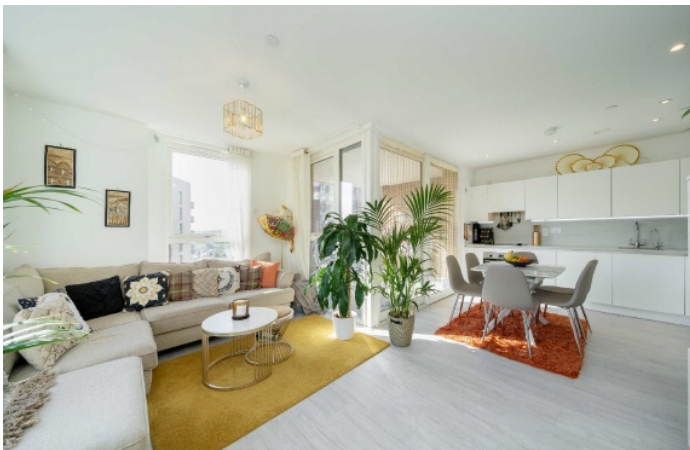
£2,150 Per calendar month

A modern spacious two bedroom, two bathroom apartment with parking in the newly built waterside development. The property offers bright rooms throughout including a large living space with modern open plan kitchen and access to private balcony. The building offers a concierge, well maintained communal gardens.

Conveniently located approximately 0.4 miles from the Thames Link, within close proximity of Hendon Underground Station and Brent Cross Shopping Centre, overlooking the beautiful Welsh Harp Nature Reserve and Reservoir.

Features

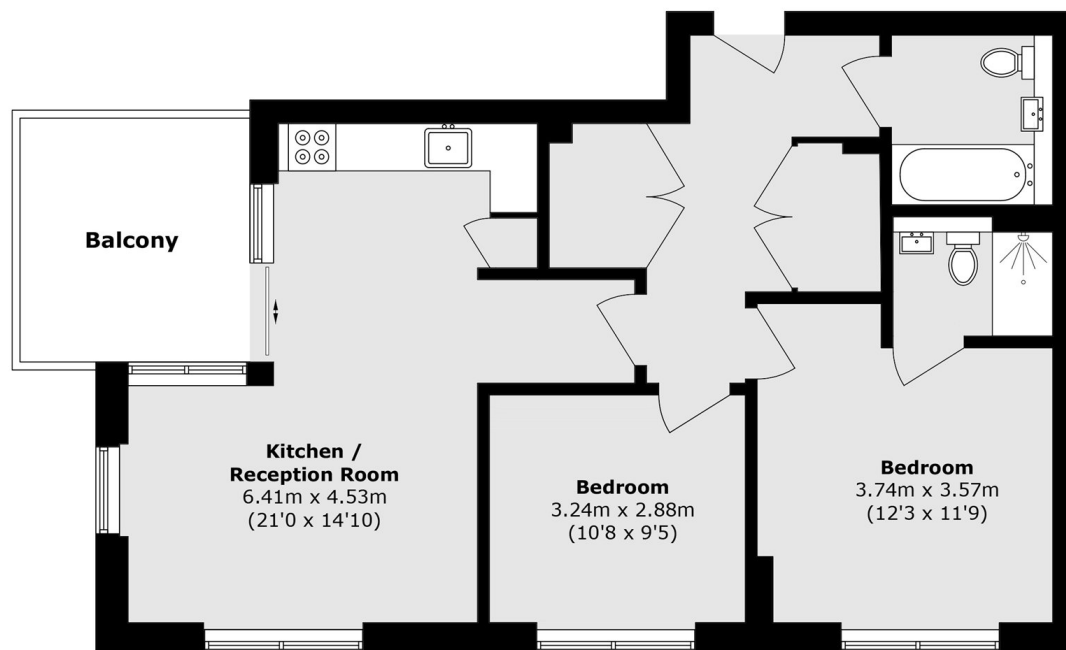
- Parking
- Close to Local Amenities
- En-Suite to Main Bedroom
- Private Balcony
- Sought After Development
- Spacious



Shearwater Drive, NW9



Shearwater Drive, London, NW9



Total area (approx.): 74.3 sq. m (799.7 sq. ft)

Total area (approx.): 8.9 sq. m (95.7 sq. ft)