



Connells

Lumpy Lane  
Southampton



### Property Description

Connells are bringing to market this spacious and well-laid-out three bedroom end-terraced home, set in a convenient and well-connected residential area. You enter through the hallway, where a storage cupboard sits to your left and another is positioned beneath the stairs. A handy W/C is also located on the ground floor. The living room spans almost the full length of the property, offering plenty of space for both a dining area and lounge furniture, with access leading out to the garden. The outdoor space is generously sized, laid to lawn with a patio seating area and rear access-ideal for relaxing, entertaining or family activities. The kitchen is fitted with sleek, high-gloss white cabinetry, an integrated oven, freestanding appliance space and ample cupboard storage. Upstairs are three well-proportioned bedrooms, along with an additional hallway storage cupboard. Bedroom one enjoys built-in storage and its own private balcony, while bedroom two features a full-width built-in wardrobe. The family bathroom is fitted with a bath with attached shower, mounted mirror with shelving, and hand-wash basin and toilet. Further benefits include gas central heating, double glazing and residents' parking. It is close to local shops, supermarkets, parks, and healthcare. It is also within easy reach of well-regarded primary and secondary schools. Commuters benefit from easy bus links into the city centre, plus easy access to Southampton Central station and major routes including M27/M3.



## Hallway

Has 2x Storage Cupboard & W/C

## W/C

2' 6" x 5' 5" ( 0.76m x 1.65m )

## Living Room

9' 7" MAX x 26' 9" MAX ( 2.92m MAX x 8.15m MAX )

Has Access to Garden

## Kitchen

6' 5" MAX x 6' 8" MAX ( 1.96m MAX x 2.03m MAX )

Has Integrated & Freestanding Appliances, and Glossy White Cabinetry

## Stairs Leading To First Floor

## Landing

Has Storage Cabinet

## Bedroom 1

8' 3" MAX x 12' 7" MAX ( 2.51m MAX x 3.84m MAX )

Has Built-In Storage & Personal Balcony

## Bedroom 2

13' 8" MAX x 11' 6" MAX ( 4.17m MAX x 3.51m MAX )

Has Full-Length Built-In Wardrobe

## Bedroom 3

11' 7" MAX x 8' 1" MAX ( 3.53m MAX x 2.46m MAX )

## Bathroom

6' 5" x 6' 3" ( 1.96m x 1.91m )

Three-Piece Bath with Attached Shower, Mounted Mirror with Shelving, and Hand-Wash Basin and Toilet.



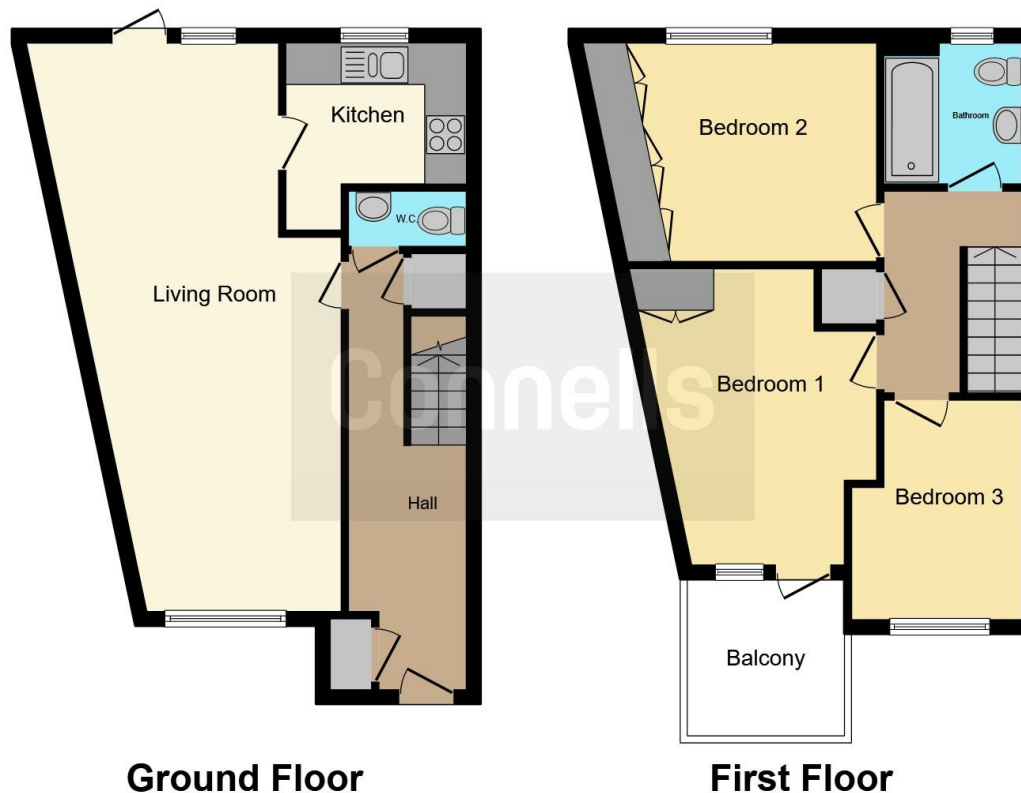












This floor plan is for illustrative purposes only. It is not drawn to scale. Any measurements, floor areas (including any total floor area), openings and orientation are approximate. No details are guaranteed, they cannot be relied upon for any purpose and they do not form part of any agreement. No liability is taken for any error, omission or misstatement. A party must rely upon its own inspection(s). Powered by [www.focalagent.com](http://www.focalagent.com)

To view this property please contact Connells on

**T 02380 789 351**  
**E [shirley@connells.co.uk](mailto:shirley@connells.co.uk)**

409 Shirley Road Shirley  
 SOUTHAMPTON SO15 3JD

EPC Rating: C Council Tax  
 Band: A

Tenure: Freehold

**view this property online [connells.co.uk/Property/SSR312280](http://connells.co.uk/Property/SSR312280)**



1. MONEY LAUNDERING REGULATIONS Intending purchasers will be asked to produce identification documentation at a later stage and we would ask for your co-operation in order that there will be no delay in agreeing the sale. 2. These particulars do not constitute part or all of an offer or contract. 3. The measurements indicated are supplied for guidance only and as such must be considered incorrect. Potential buyers are advised to recheck measurements before committing to any expense. 4. We have not tested any apparatus, equipment, fixtures, fittings or services and it is in the buyers interest to check the working condition of any appliances.

Connells Residential is registered in England and Wales under company number 1489613, Registered Office is Cumbria House, 16-20 Hockliffe Street, Leighton Buzzard, Bedfordshire, LU7 1GN. VAT Registration Number is 500 2481 05.

**See all our properties at [www.connells.co.uk](http://www.connells.co.uk) | [www.rightmove.co.uk](http://www.rightmove.co.uk) | [www.zoopla.co.uk](http://www.zoopla.co.uk)**

Property Ref: SSR312280 - 0006