

# Flat 4 50 High Street Wem SY4 5DW



1 Bedroom Flat  
£550 PCM

## The features

- ONE BEDROOM TOWN CENTRE APARTMENT
- BATHROOM
- BEDROOM
- EPC RATING D
- KITCHEN
- LIVING ROOM
- GAS CENTRAL HEATING AND SECONDARY GLAZING



**Well presented first floor apartment benefiting from a great central position within the market town of Wem with comprehensive amenities and easy access to link roads for other nearby towns. In brief the accommodation comprises communal entrance, small entrance lobby, attractive lounge, kitchen, bedroom and bathroom. Gas central heating.**

### **Property details**

**LIVING ROOM** 10'2" x 11'5" (3.1 x 3.5)  
Radiator, sash window overlooking the front.

**KITCHEN** 6'2" x 7'10" (1.9 x 2.4)  
Fitted kitchen units with work surfaces over, stainless steel sink unit, vinyl floor covering, tiled splash backs, fitted oven and hob unit, fridge, and space for washing machine, window to side.

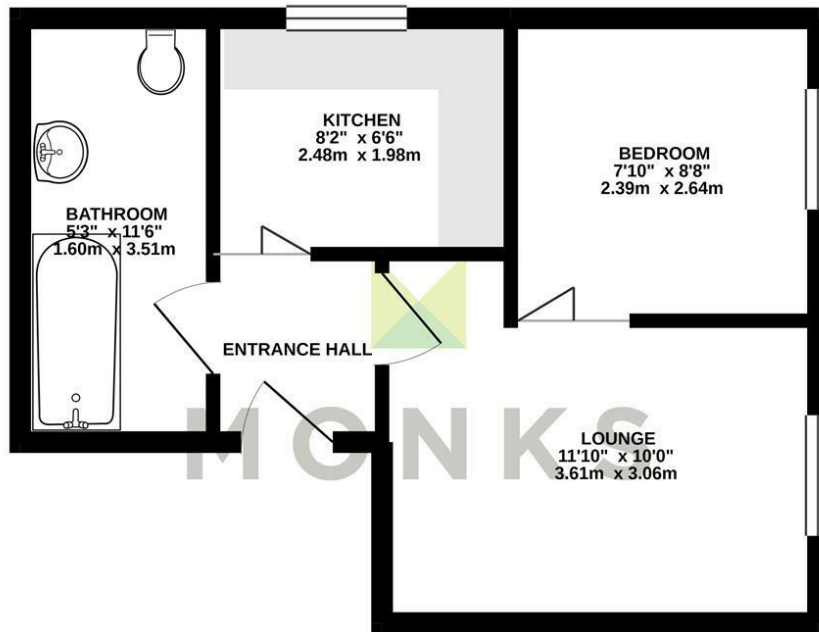
**BATHROOM**  
Modern suite comprising panelled bath with shower, hand wash basin and WC, tiling to walls, vinyl floor covering, radiator.

**BEDROOM** 7'6" x 7'6" (2.3 x 2.3)  
Radiator, window to front.

**Flat 4 50 High Street, Wem, SY4 5DW.**

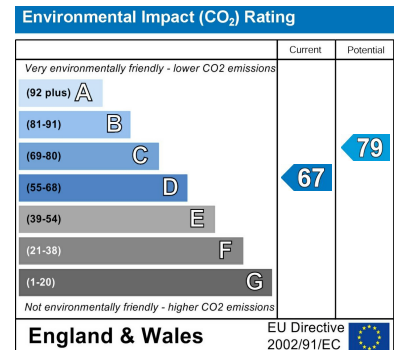
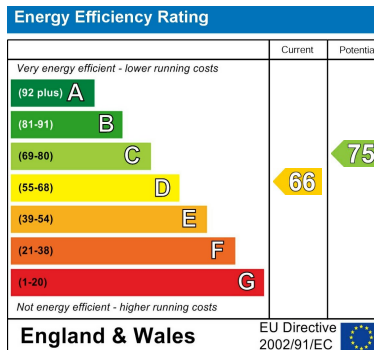
**1 Bedroom Flat  
£550 PCM**

1ST FLOOR  
309 sq.ft. (28.7 sq.m.) approx.



TOTAL FLOOR AREA: 309 sq.ft. (28.7 sq.m.) approx.

Whilst every attempt has been made to ensure the accuracy of the floorplan contained here, measurements of doors, windows, rooms and any other items are approximate and no responsibility is taken for any error, omission or mis-statement. This plan is for illustrative purposes only and should be used as such by any prospective purchaser. The services, systems and appliances shown have not been tested and no guarantee as to their operability or efficiency can be given.  
Made with Metropix ©2020



**Judy Bourne**

Director at Monks  
judy@monks.co.uk

**Get in touch**

Call. 01743 361422  
Email. info@monks.co.uk  
Click. www.monks.co.uk

**Shrewsbury office**

10a-11 Shoplatch,  
Shrewsbury, Shropshire, SY1

**We're available 7 days a week**

HOME – four words that define who,  
and what we are:

Honest, Original, Motivated, Empathetic

Monks for themselves and for the vendors of this property, whose agents they are give notice that:

- These particulars provide a general outline only for the guidance of intended purchasers and do not constitute part of an offer or contract.
- All descriptions, dimensions and distances are approximate, references to state and condition, relevant permissions for use and occupation and other details are provided in good faith and believed to be correct.
- No person in the employment of Monks has any authority to make or give any representation or warranty whatever in relation to this property.
- Electricians and other appliances mentioned in these particulars have not been tested by Monks. Therefore prospective purchasers must satisfy themselves as to their working order.