



Haversham Close, TW1

£2,595 Per calendar month

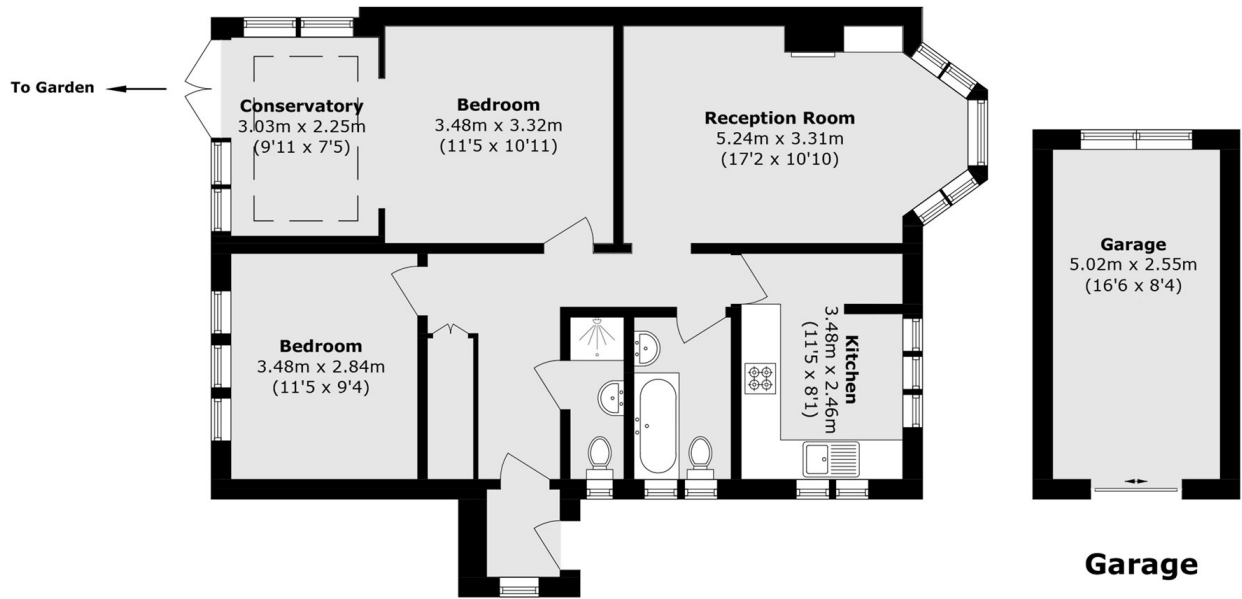
A well-presented two bedroom ground floor maisonette in a quiet East Twickenham cul-de-sac. The property features a bright reception room, a unique and extensive master bedroom with conservatory that has direct access to the communal gardens and a further double bedroom. Additional benefits include a garage and off-street parking, all within 0.2 miles of the River Thames.

Located in a quiet cul-de-sac in sought-after East Twickenham, the property is just 0.2 miles from the River Thames and 0.6 miles from Richmond town centre, offering an excellent selection of shops, cafés, bars and restaurants, as well as Richmond's mainline and Underground station.

Features

- Ground Floor Maisonette
- Bright Reception Room
- Communal Gardens
- Two Double Bedrooms
- Garage
- Off-Street Parking

Haversham Close, Twickenham, TW1



Ground Floor

Total Area (approx.): 73.7 sq. m (793.3 sq. ft)

Garage area (approx.): 12.8 sq. m (137.7 sq. ft)