



PRINCESS ROAD, NW6

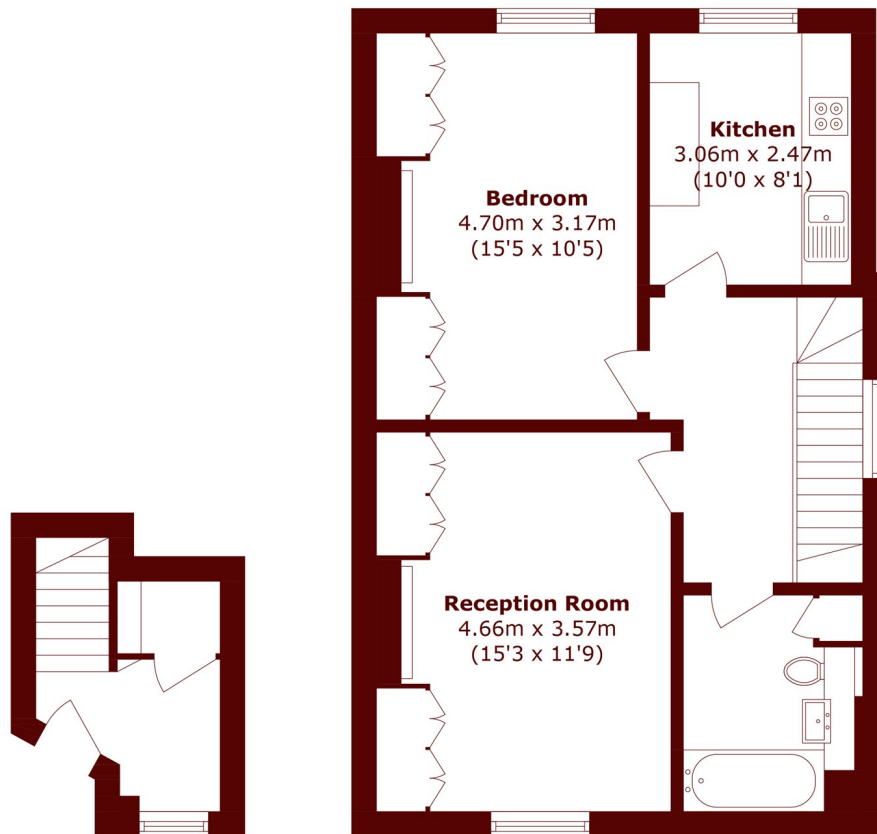
£525,000

Set on the first floor of an attractive period conversion, this bright one bedroom apartment offers approximately 659 sq ft of well designed living space.

Period conversion
One bedroom
First floor apartment

Excellent condition
Approx. 659sq ft
Chain free

STEP INSIDE PRINCESS ROAD



Raised Ground Floor

First Floor

Total area (approx.): 61.3 sq. m (659.8 sq. ft)

Little Venice
020 7993 3050

Energy Rating: D We aim to make our particulars both accurate and reliable. However, they are not guaranteed; nor do they form part of an offer or contract. If you require clarification on any points then please contact us, especially if you're traveling some distance to view. Please note that appliances and heating systems have not been tested and therefore no warranties can be given as to their good working order

**MARSH &
PARSONS**