



TO LET.

Undergoing Refurbishment.



Production / Warehouse unit.

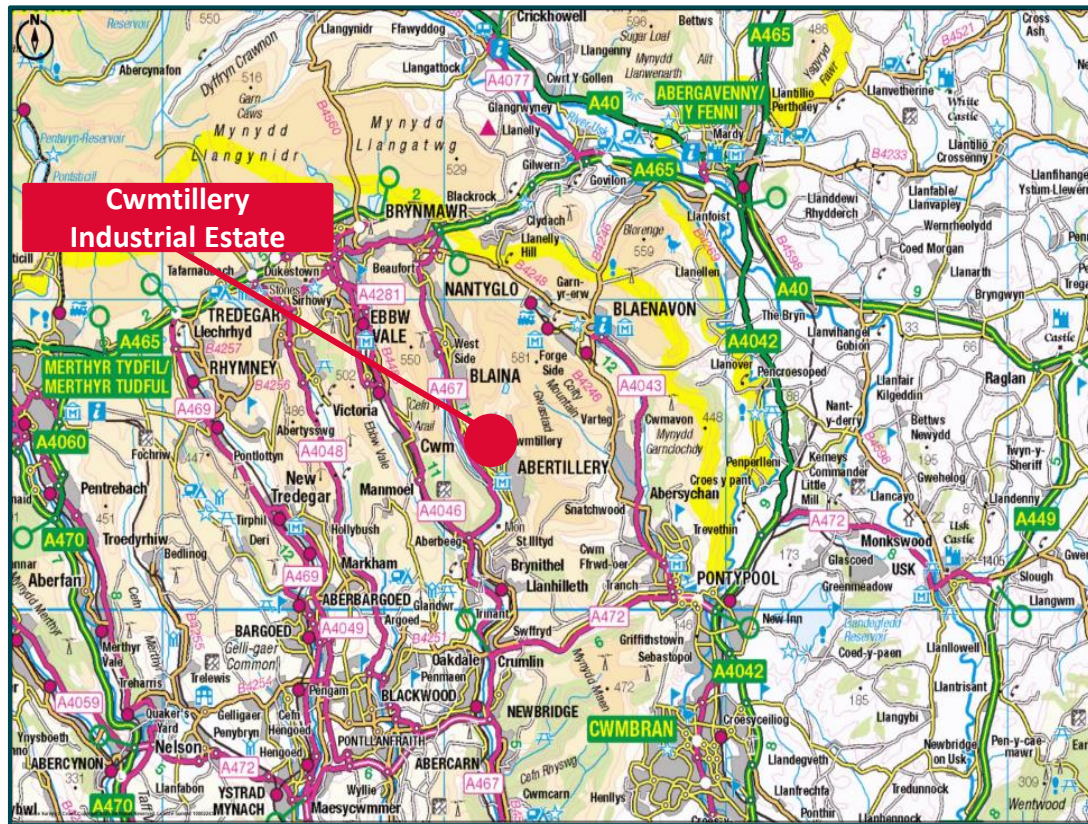
5,000 sq ft to 116,500 sq ft.

Cwmtillery Industrial Estate, Cwmtillery, Abertillery, NP13 1LZ.

Location.

The property is located on Cwmtillery Industrial Estate a well-established industrial estate in the County Borough of Blaenau Gwent, which is approximately 2 miles to the northeast of Abertillery town centre.

The property is within close proximity to the A467 which provides access to the Heads of the Valleys Road (A465) approximately 5 miles to the north, and Junction 28 of the M4 approximately 16 miles to the south.



Description.

This production / warehouse unit has been extended over the years.

The construction is mainly steel portal frame with elevations and pitched roof of profile steel cladding.

Heights range from 4m to 7m. There are a number of level access doors to the side elevations that open out into designated service yards.

Internally, two storey office accommodation is located to the front elevation and offers a mix of open plan and cellular space. Welfare facilities include a canteen.

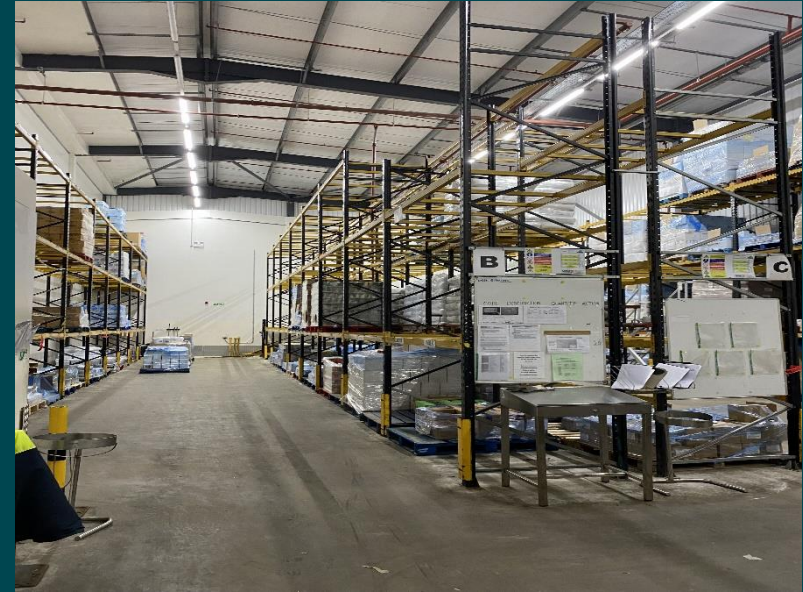
Externally, there is a separate car park and security gate house all set within a securely fenced site.

Accommodation.

The property has a Gross Internal Area of 116,520 sq ft (10,825 sq m).

The configuration of the site is such the landlord is able to sub divide to create smaller units from 5,000 sq ft upwards.

The total site area is circa 8 acres though 1.3 acres of this is protected woodland to the south.



Video Tour

Property Website

Services.

The property benefits from mains services including electricity, gas, water and drainage. In the past the site had power capacity of 2.5MVA.

Interested parties are advised to make their own enquiries.

Lease Terms.

New lease available of Full Repairing and Insuring terms.

Quoting Rent.

On application.

Service Charge.

There will be a service charge for the maintenance and upkeep of the common part of the estate.

EPC.

Energy Performance Certificate Asset Rating 'B' (33).

A copy of the certificate is available upon request.

Rateable Value.

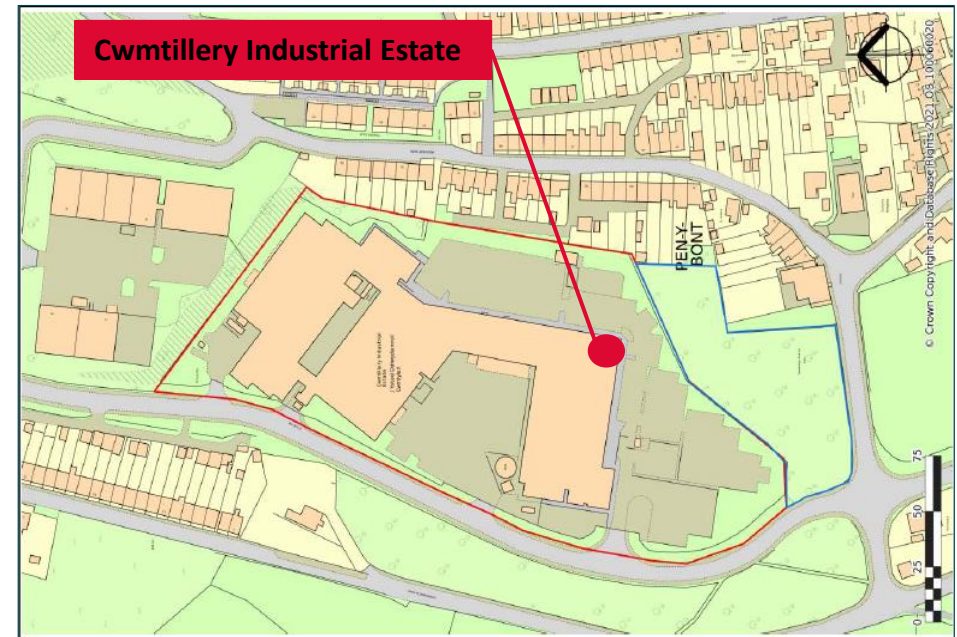
To be assessed once subdivided and refurbished.

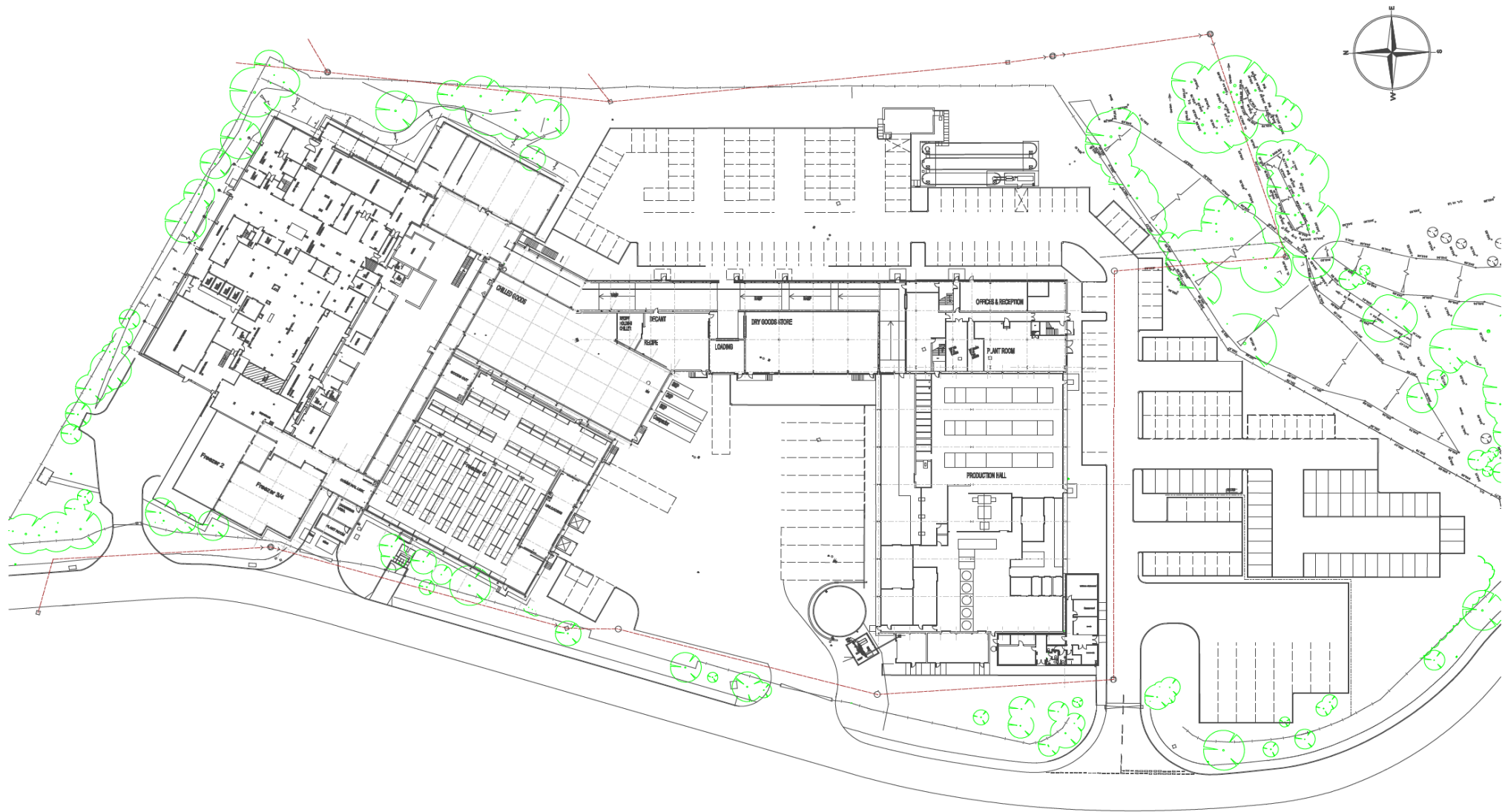
VAT.

VAT will be payable on all costs.

AML.

A successful bidder will be required to provide the usual information to satisfy the Anti-Money Laundering requirements when Heads of Terms are agreed.





Contact.

For further information, or to arrange a viewing, please contact the sole agents Knight Frank:



NEIL FRANCIS

07766 511983
neil.francis@knightfrank.com

KATE MAFFEY

07977 759 501
kate.maffey@knightfrank.com

RHYS PRICE

07974 366099
rhys.price@knightfrank.com

May 2025 - SUBJECT TO CONTRACT

Important Notice

1. Particulars: These particulars are not an offer or contract, nor part of one. Any information about price or value contained in the particulars is provided purely as guidance, it does not constitute a formal valuation and should not be relied upon for any purpose. You should not rely on statements by Knight Frank in the particulars or by word of mouth or in writing ("information") as being factually accurate about the property, its condition or its value. Neither Knight Frank LLP nor any joint agent has any authority to make any representations about the property. No responsibility or liability is or will be accepted by Knight Frank LLP, seller(s) or lessor(s) in relation to the adequacy, accuracy, completeness or reasonableness of the information, notice or documents made available to any interested party or its advisers in connection with the proposed transaction. All and any such responsibility and liability is expressly disclaimed.
2. Photos, Videos etc: The photographs, images, property videos and virtual viewings etc. show only certain parts of the property as they appeared at the time they were taken. Areas, measurements and distances given are approximate only.
3. Regulations: Any reference to alterations to, or use of, any part of the property does not mean that any necessary planning, building regulations or other consent has been obtained. A buyer or lessee must find out by inspection or in other ways that these matters have been properly dealt with and that all information is correct.
4. VAT: The VAT position relating to the property may change without notice.
5. Financial Crime: In accordance with the Money Laundering, Terrorist Financing and Transfer of Funds (Information on the Payer) Regulations 2017 and Proceeds of Crime Act 2002 Knight Frank LLP may be required to establish the identity and source of funds of all parties to property transactions.
6. To find out how we process Personal Data, please refer to our Group Privacy Statement and other notices at <https://www.knightfrank.com/legals/privacy-statement>.

Particulars dated April 2025 . Photographs dated June 2023.

Knight Frank is the trading name of Knight Frank LLP. Knight Frank LLP is a limited liability partnership registered in England and Wales with registered number OC305934. Our registered office is at 55 Baker Street, London W1U 8AN where you may look at a list of members' names. If we use the term 'partner' when referring to one of our representatives, that person will either be a member, employee, worker or consultant of Knight Frank LLP and not a partner in a partnership.

knightfrank.co.uk

**Connecting people
& property, perfectly.**