



PLOUGH LANE, SW17

£500,000

- Modern apartment
- Bright and spacious
- Impressive sunny balcony
- Allocated parking
- Excellent condition
- Energy rating: B





ABOUT THE HOME

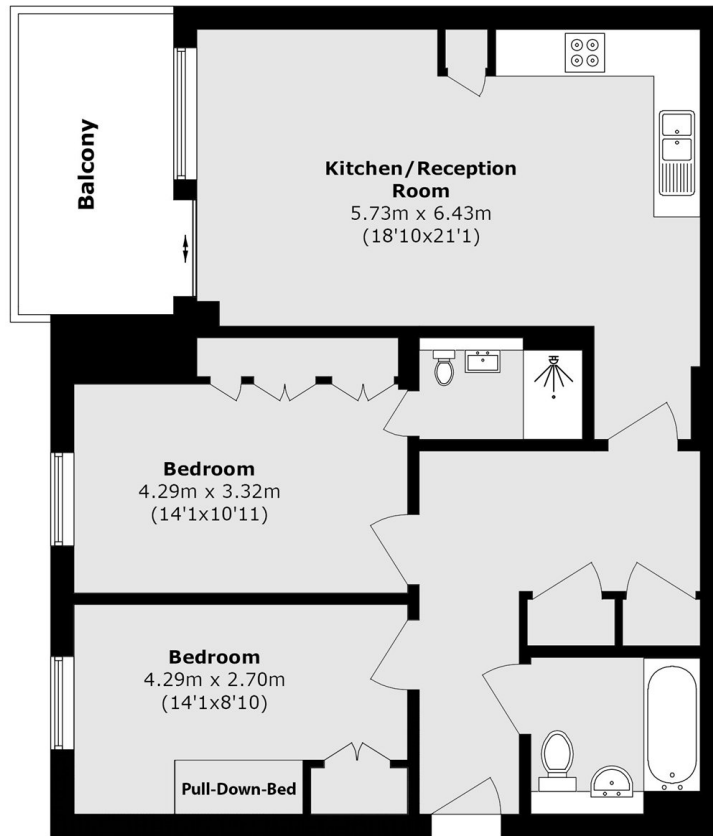
An impressive two double bedroom, two bathroom modern apartment with a spacious private balcony and allocated parking space.

This property offers a bright open plan kitchen / reception room with plenty of room for dining. It provides access to the private and sunny balcony with floor to ceiling sliding doors and windows, flooding the space with natural light. There are two good sized double bedrooms, one with it's own modern en-suite bathroom and a further sizable bathroom. The spacious hallway features a large storage cupboard. The property also benefits from a secure allocated parking space.

Orton House is located within the much sought after Stadia Three development and is 0.7 miles of Haydons Road mainline station and 0.8 mile of both Earlsfield mainline station and 1 mile to Tooting Broadway underground station. The local amenities including shops, bars, restaurants and the green open spaces of the Wandle Meadow Nature Park.







Total area (approx.): 75.2 sq. m (809.5 sq. ft)

Balcony area (approx.): 8.1 sq. m (87.2 sq. ft)

JACKSONS EARLSFIELD

372-374 Garratt Lane,
Earlsfield, London, SW18 4ES
Sales: 020 8971 7979
Lettings: 020 8971 7070

Energy Rating: B We aim to make our particulars both accurate and reliable. However they are not guaranteed; nor do they form part of an offer or contract. If you require clarification on any points then please contact us, especially if you're traveling some distance to view. Please note that appliances and heating systems have not been tested and therefore no warranties can be given as to their good working order.