

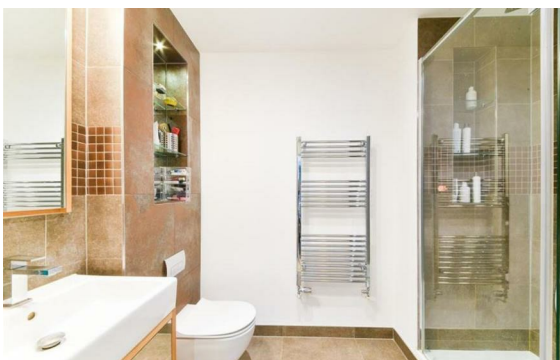


Maltby Street, London Bridge, London, SE1

Rent £1,113 Per Month

3 Bed | 2 Bath | 1 Reception

Please call us on 020 7724 2233 or email us info@newingtonstates.com to book a viewing.



60 Upper Montagu Street

London

W1H 1SN

020 7724 2233

info@newingtonestates.com

A stunning three-bedroom penthouse apartment featuring a private terrace with far-reaching skyline views, perfect for entertaining or relaxing.

The property offers a bright south-west facing reception room filled with natural light, a private balcony, three generous bedrooms, and access to a beautifully landscaped communal courtyard. Ideally located in the heart of London Bridge, moments from Tower Bridge, with excellent transport links and surrounded by fashionable bars, cafés, and restaurants.

Energy Efficiency Rating: B

Agents Note: Whilst every care has been taken to prepare these particulars, they are for guidance purposes only. All measurements are approximate and are for general guidance purposes only and whilst every care has been taken to ensure their accuracy, they should not be relied upon and potential buyers/tenants are advised to recheck the measurements.

<http://www.newingtonestates.com>