



## Gordon Road, W5

£625,000

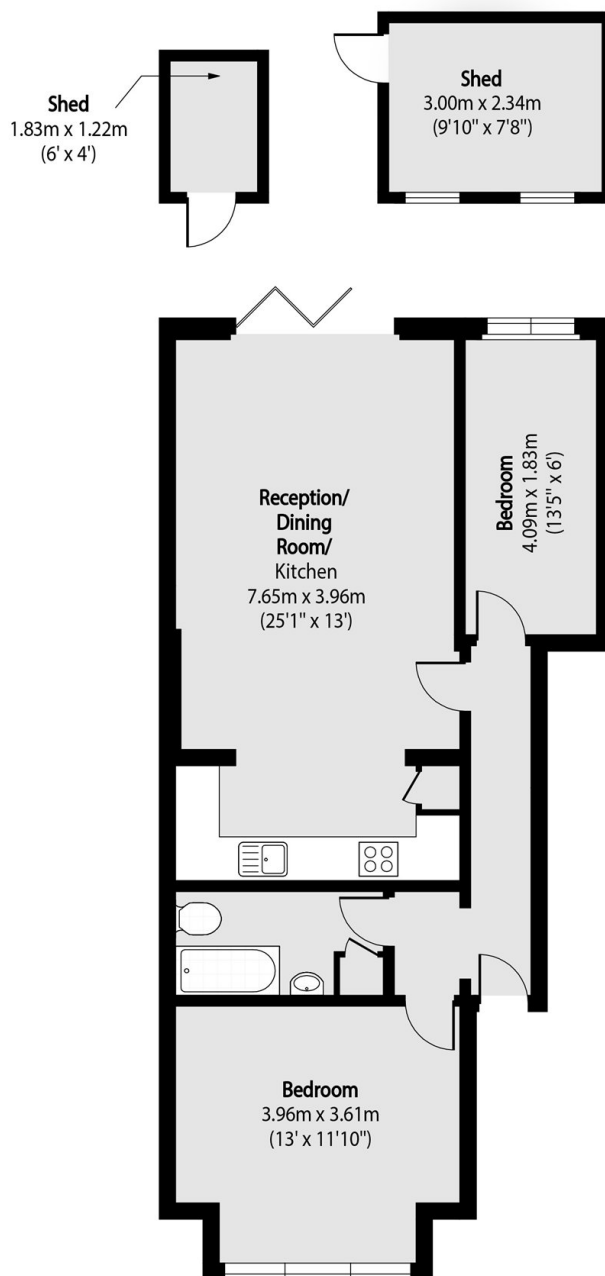
This elegant two-bedroom ground floor flat is set within a double-fronted period house on Gordon Road. It features bright, high-ceilinged interiors and a non allocated parking space. In addition there is a generous private garden with a large storage shed.

Perfectly positioned moments from Haven Green, the property offers immediate access to Ealing Broadway's vibrant shops and restaurants. Exceptional transport links via the Elizabeth, Central, and District lines, ensuring rapid connections into Central London and beyond.

### Features

- Ground Floor
- Two Bedrooms
- Private Garden
- Non Allocated Parking
- SOFH and 975 Lease
- Central Location

# Gordon Road, London, W5



Total area (approx): 62.99 sq m (678 sq. ft)

Shed total area (approx): 2.23 sq m (24 sq. ft)

Office total area (approx): 7.06 sq m (76 sq. ft)