



**Rowe
& Co.**

47 Beresford Road, Chandler's Ford

Eastleigh

OIEO £300,000

**Rowe
& Co.**



47 Beresford Road

Chandler's Ford, Eastleigh

INTRODUCTION

Offered with no forward chain is this well located three-bedroom home that offers a fantastic opportunity for the new owner to further improve. Situated on a good plot with a large frontage this home is within close proximity to popular local schools. Accommodation to the ground floor comprises an entrance porch, spacious lounge / dining room, hallway, kitchen and conservatory. On the first floor are three well-proportioned bedrooms, bathroom and W/C. Outside benefits a wraparound rear garden and large frontage with parking and garage. We anticipate a high level of interest and early viewing comes highly recommended.

LOCATION

Chandler's Ford is a popular Hampshire town with a variety of shops, restaurants and traditional public houses. The local catchment schools are Toynbee Secondary school, alongside several well-regarded private schools. Approximately a 15-minute drive to Winchester and a 17-minute drive to Southampton, both cities have an extensive range of facilities. Communications are excellent with the M3 and M27 nearby and the railway station has links to Winchester and Southampton; London Waterloo is 57 minutes from Winchester and 65 minutes from Southampton Parkway.

Council Tax band: C

Tenure: Freehold



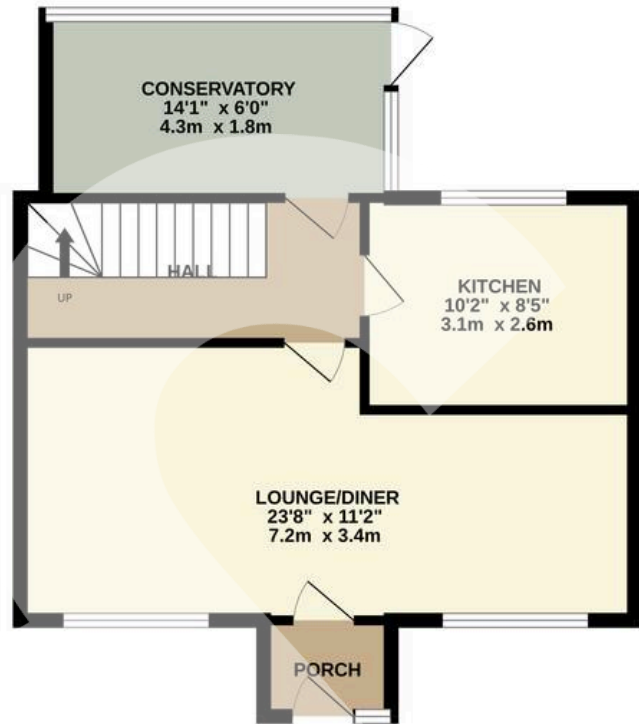
47 Beresford Road

Chandler's Ford, Eastleigh

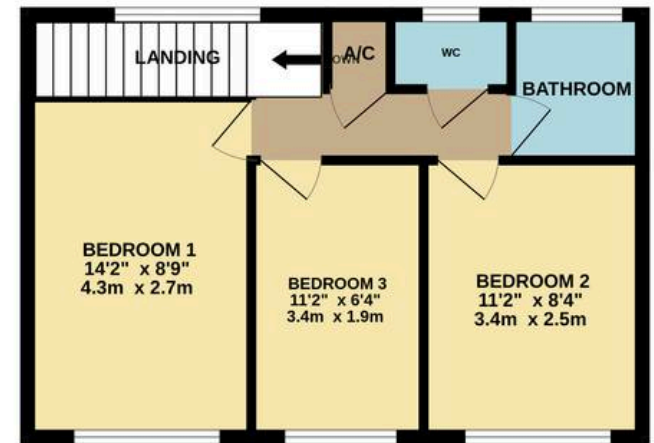
- Catchment To Popular Local Schools
- Three Well Proportioned Bedrooms
- Exciting Opportunity To Further Improve
- Spacious Lounge / Dining Room
- Wrap Around Rear Garden




GROUND FLOOR



1ST FLOOR



 1 Rufus Court, 103 Winchester Road
Chandlers Ford,
SO53 2GG

 02381 102221

 chandlersford@rowehomes.co.uk

Whilst every attempt has been made to ensure the accuracy of the floorplan contained here, measurements of doors, windows, rooms and any other items are approximate and no responsibility is taken for any error, omission or mis-statement. This plan is for illustrative purposes only and should be used as such by any prospective purchaser. The services, systems and appliances shown have not been tested and no guarantee as to their operability or efficiency can be given.
Made with Metropix ©2024