



Rambler Cottage High Street, Calver Village, Hope Valley, S32 3XP



Rambler Cottage High Street Calver Village

Offers Around

£265,000

In a delightful location in the heart of a picturesque Peak District village, this one bedroom cottage is deceptively large and has spectacular panoramic views over the valley and towards Curbar Edge.

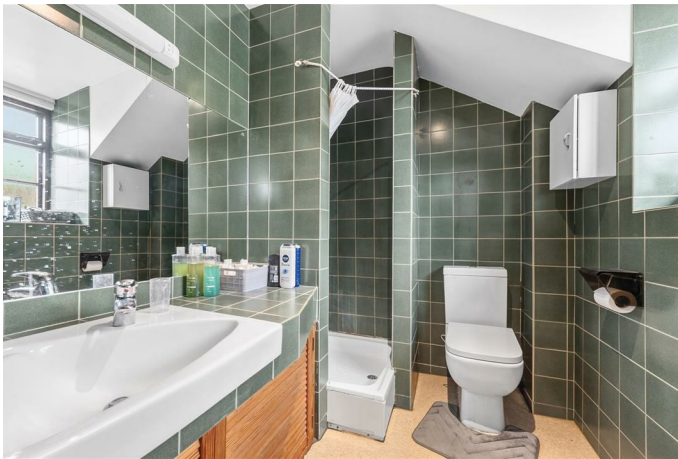
The property has a great deal of charm and character and has been substantially extended. It is offered for sale with immediate vacant possession and no chain. Internal inspection is an absolute must. A large entrance porch leads to a cloakroom and downstairs W.C. . The well-proportioned, spacious sitting-room features a wood burning stove and a large, original oak beam. Steps lead up to a fitted kitchen with a good range of units and a generous dining area, with lovely views over the valley and French windows leading to a rear courtyard. The first floor comprises a very large double bedroom with spectacular views, and a shower room with full suite. The property has gas central heating and mains water. It also has potential for further development or extension, subject to necessary planning permission.

Outside to the front there is a raised garden area with lovely views and an off-road parking space on the drive, enclosed by a five-bar gate. To the rear there is a walled courtyard area.

Calver is one of the Peak District's most sought-after villages with good local shops, pubs, restaurants and easy access to the train station. It is surrounded by the glorious countryside of the Peak District with Chatsworth House just down the road.

- Charming and unusually spacious one bedroom cottage
- Central location in a picturesque Peak District Village
- Offering attractive and generous accommodation
- Spacious sitting room with wood burning stove
- Good size dining area and kitchen
- Spectacular views over the valley and to Curbar Edge
- Off-road parking, garden to front and rear courtyard
- For sale with immediate vacant possession and no chain
- Early inspection strongly recommended
- EPC : D





Rambler Cottage



Ground Floor
Approximate Floor Area
612 sq.ft
(56.82 sq.m.)

First Floor
Approximate Floor Area
319 sq.ft
(29.60 sq.m.)

Approx. Gross Internal Floor Area 931 sq.ft / 86.42 sq.m

Illustration for identification purposes only. Measurements are approximate, not to scale

While we endeavour to make our sales particulars fair, accurate and reliable, they are only a general guide to the property and, accordingly, if there is any point, which is of particular importance to you, please contact the relevant office. The Agents have not tested any apparatus, equipment, fittings or services and so cannot verify they are in working order. The buyer is advised to obtain verification. Please note all the measurement details are approximate and should not be relied upon as exact. All plans, floor plans and maps are for guidance purposes only and are not to scale. Under no circumstances should they be relied upon as exact or for use in planning carpets and other such fixtures, fittings or furnishings. YOUR HOME IS AT RISK IF YOU DO NOT KEEP UP REPAYMENTS ON A MORTGAGE OR OTHER LOAN SECURED ON IT. 'A Life Assurance policy may be requested.' 'Written Quotations of credit terms available on request.'

Banner Cross
T: 0114 268 3241
E: bannercross@saxtonmee.co.uk
www.saxtonmee.co.uk

Hathersage
T: 01433 650009
E: hathersage@saxtonmee.co.uk

Bakewell
T: 01629 815307
E: bakewell@saxtonmee.co.uk

Matlock
T: 01629 828250
E: matlock@saxtonmee.co.uk

