



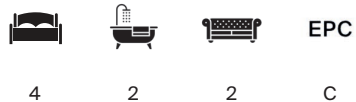
ORMOND ROAD

Richmond TW10



# CHARMING GRADE II LISTED PROPERTY

A charming, fully renovated Grade II listed 4 bedroom terraced house, in a prime Richmond location.



Local Authority: London Borough of Richmond Upon Thames

Council Tax band: G

Tenure: Freehold

Guide price: £2,250,000



## LOCATED ON THE LOWER SLOPES OF RICHMOND HILL

This rare and characterful Grade II listed period home occupies an enviable position on the highly sought-after lower slopes of Richmond Hill. A true pearl of a dwelling, it is perfectly located just moments from the River Thames and the Thames Towpath, offering an exceptional lifestyle with riverside restaurants, scenic walks, cycling routes and opportunities for boating and fishing all close at hand. A wealth of glorious green spaces – including Richmond Green, Old Deer Park, Terrace Gardens and the vast 2,500 acres of Richmond Park – provide endless scope for outdoor enjoyment, while Richmond's vibrant town centre, with its excellent amenities, shops and cafés, is only a short stroll away.

Local Ofsted 'Outstanding' rated schools include The Vineyard School, Deer Park School, Marshgate Primary School, Orleans Primary School, Orleans Park School,







## WITH STUNNING PERIOD FEATURES

Dating back to 1725 during the reign of King George I, this impressive property forms part of a beautiful early Georgian terrace and retains a remarkable amount of original character. The house is rich in period charm, with high ceilings, elegant proportions throughout and a delightful rear garden completing the picture.

The raised ground floor opens into a stunning double reception room featuring original panelling, a beautiful fireplace and large sash windows with newly installed secondary double glazing, flooding the space with natural light. This elegant room spans the full depth of the house and is enhanced by attractive wooden flooring. To the rear, a cloakroom leads out to the patio garden, a wonderful spot for summer entertaining and al fresco dining.





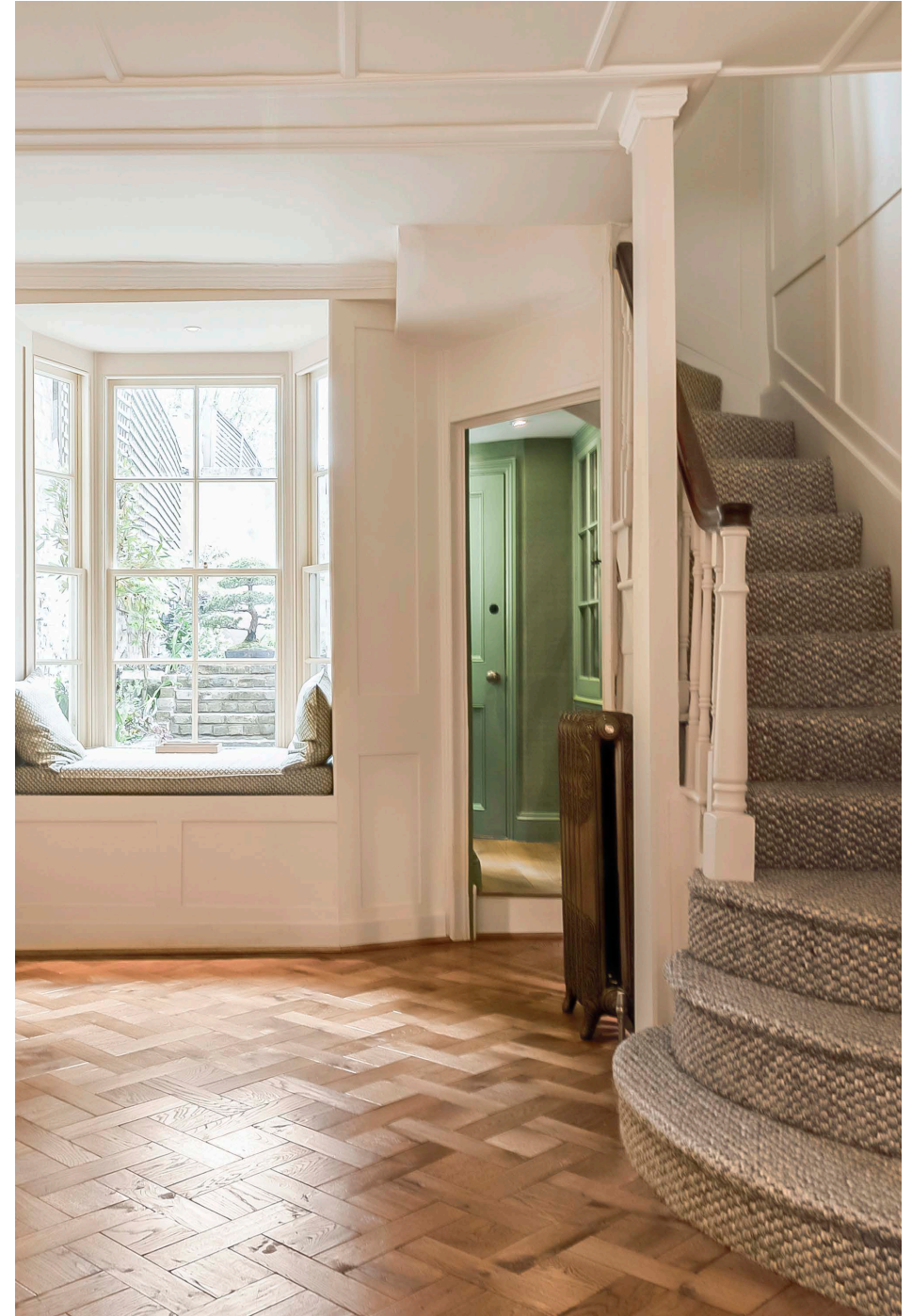


## BEAUTIFULLY REFURBISHED

The lower ground floor houses a fully integrated kitchen and breakfast room, which is unusually bright thanks to two windows and access to a front terrace. To the rear, a further reception room has been thoughtfully arranged as a media room, complemented by a separate utility area.

On the first floor, the generous principal bedroom boasts a charming fireplace and built-in wardrobes, alongside a further double bedroom and a stylish shower room finished with Lilac marble. The second floor offers an additional spacious double bedroom, a study or fourth bedroom, and a well-appointed family bathroom.

The property has been beautifully refurbished by the current owner, combining historic elegance with modern comfort to create an exceptional and inviting home.







Approximate Gross Internal Area = 160.3 sq m / 1725 sq ft

This plan is for layout guidance only. Not drawn to scale unless stated. Windows and door openings are approximate. Whilst every care is taken in the preparation of this plan, please check all dimensions, shapes and compass bearings before making any decisions reliant upon them. (ID767266)



Edward Adler

020 8939 2802

[edward.adler@knightfrank.com](mailto:edward.adler@knightfrank.com)

**Knight Frank Richmond**

23 Hill Street

Richmond TW9 1SX

[knightfrank.co.uk](https://www.knightfrank.co.uk)

Your partners in property

1. Particulars: These particulars are not an offer or contract, nor part of one. You should not rely on statements given by Knight Frank in the particulars, by word of mouth or in writing ("information") as being factually accurate about the property, its condition or its value. Neither Knight Frank nor any joint agent has any authority to make any representations about the property, and accordingly any information given is entirely without responsibility on the part of Knight Frank. 2. Material Information: Please note that the material information is provided to Knight Frank by third parties and is provided here as a guide only. While Knight Frank has taken steps to verify this information, we advise you to confirm the details of any such material information prior to any offer being submitted. If we are informed of changes to this information by the seller or another third party, we will use reasonable endeavours to update this as soon as practical. 3. Photos, Videos etc: The photographs, property videos and virtual viewings etc. show only certain parts of the property as they appeared at the time they were taken. Areas, measurements and distances given are approximate only. 4. Regulations etc: Any reference to alterations to, or use of, any part of the property does not mean that any necessary planning, building regulations or other consent has been obtained. A buyer must find out by inspection or in other ways that these matters have been properly dealt with and that all information is correct. 5. Fixtures and fittings: A list of the fitted carpets, curtains, light fittings and other items fixed to the property which are included in the sale (or may be available by separate negotiation) will be provided by the Seller's Solicitors. 6. VAT: The VAT position relating to the property may change without notice. 7. To find out how we process Personal Data, please refer to our Group Privacy Statement and other notices at <https://www.knightfrank.com/legals/privacy-statement>.

Particulars dated April 2026. Photographs and videos dated April 2026. All information is correct at the time of going to print. Knight Frank is the trading name of Knight Frank LLP. Knight Frank LLP is a limited liability partnership registered in England and Wales with registered number OC305934. Our registered office is at 55 Baker Street, London W1U 8AN. We use the term 'partner' to refer to a member of Knight Frank LLP, or an employee or consultant. A list of members names of Knight Frank LLP may be inspected at our registered office. If you do not want us to contact you further about our services then please contact us by either calling 020 3544 0692, email to [marketing.help@knightfrank.com](mailto:marketing.help@knightfrank.com) or post to our UK Residential Marketing Manager at our registered office (above) providing your name and address.

