



Durham Road, London – N2 9DR  
£1,200 pcm

**DAVID  
ANDREW**

your  
most  
valuable  
asset

Recently refurbished to an exceptional standard, this stylish studio apartment is situated on the first floor of an impressive Victorian conversion on a quiet residential street in East Finchley, just a short 10-minute walk from East Finchley Underground Station (Northern Line).

The property boasts a bright and spacious living area, a modern contemporary kitchen, sleek laminate flooring, a recently fitted modern bathroom, generous built-in storage, and double-glazed windows throughout. Every detail has been finished to a high standard, creating a fresh and inviting space.

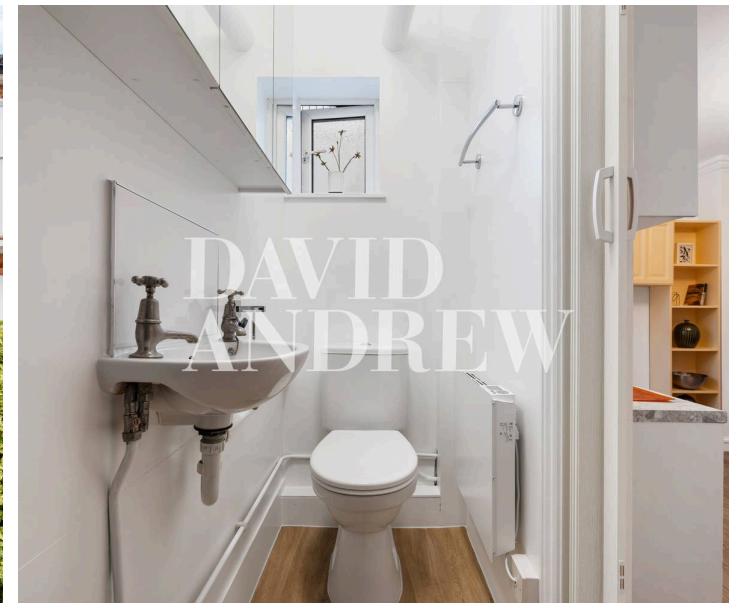
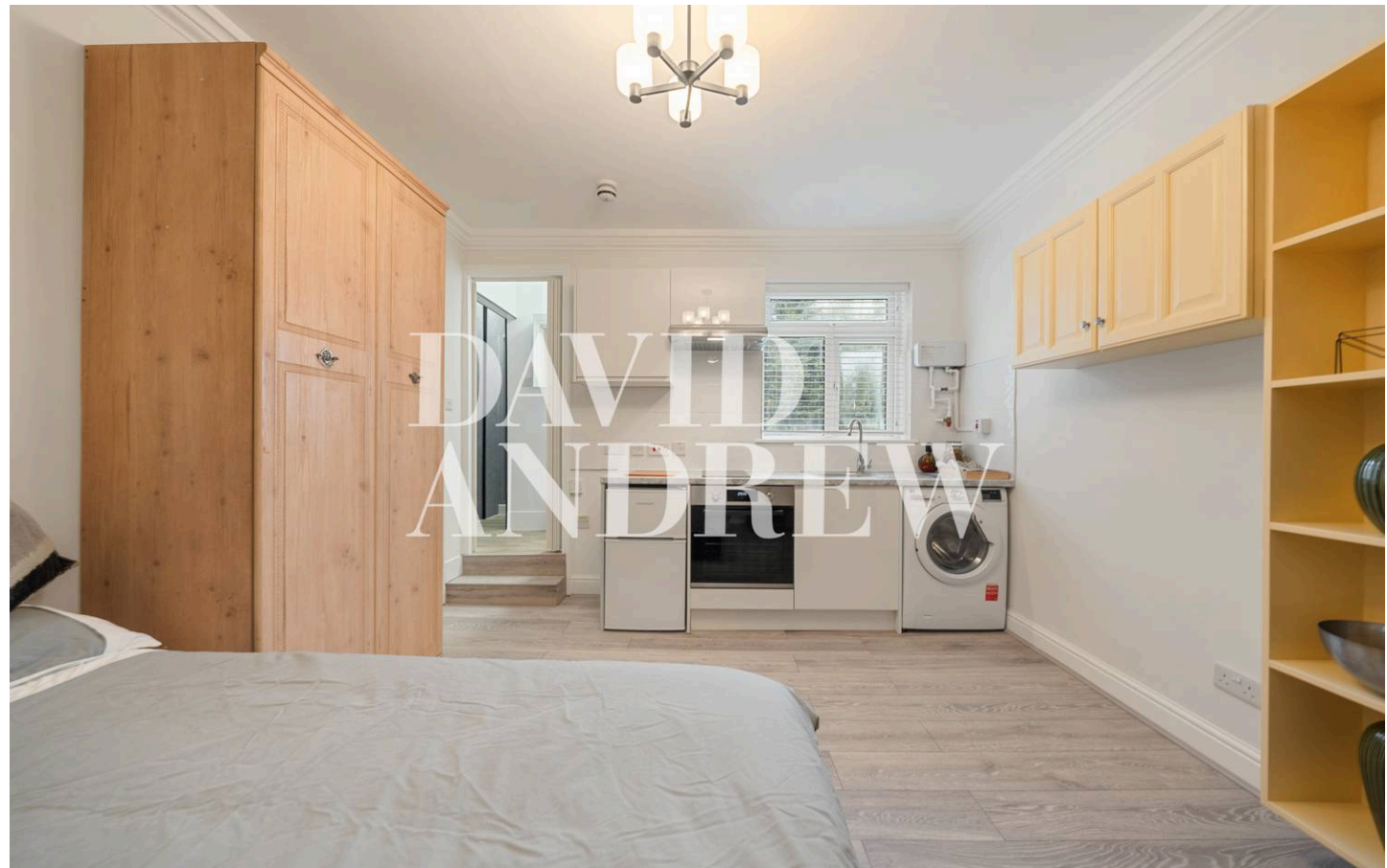
Ideally positioned within easy reach of East Finchley station, excellent bus links, and an array of local amenities including shops, cafés, bars, and restaurants. Offered furnished and available 3rd of July.

Council Tax band: A

EPC Energy Efficiency Rating: C

EPC Environmental Impact Rating:

- Studio Apartment
- Comprising 183 sq ft / 17 sq mt
- Wooden Flooring Throughout
- Double Glazed Windows
- Open Plan Kitchen
- Period Conversion
- Close to Amenities
- Walking Distance from East Finchley Tube Station
- Offered Furnished
- Available 7th of July



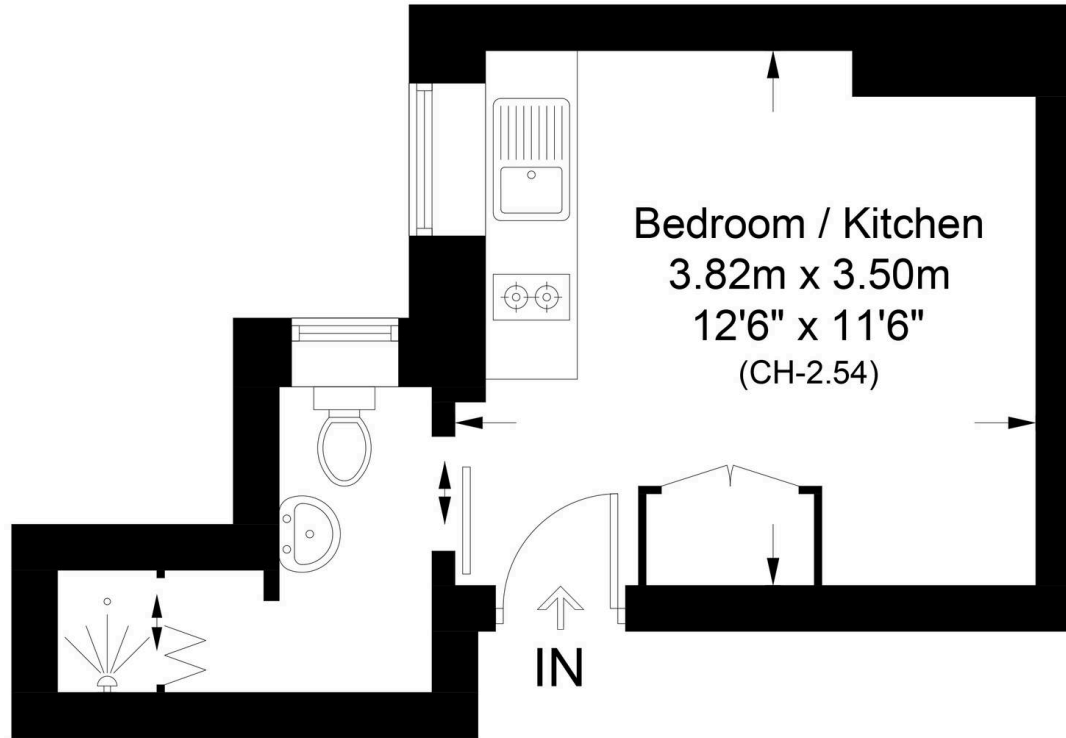




**Durham Road, N2**

Approximate Gross Internal Area = 183 sq ft / 17.0 sq m

**DAVID ANDREW** | your most valuable asset



## First Floor

### Archway Office

671 Holloway Road  
London, N19 5SE

T (0)20 7619 3750

### Highbury Office

90 Highbury Park  
London, N5 2XE

T (0)20 7354 9111

### Finsbury Park Office

167 Stroud Green Road  
London, N4 3PZ

T (0)20 7281 2000

### Property Management Office

235 Blackstock Road  
London, N5 2LL

T (0)20 7354 9222

*scan to book a viewing*



**Certified Property Measurer**

This plan is for layout guidance only. Not drawn to scale unless stated. Windows and door openings are approximate. Whilst every care is taken in the preparation of this plan, please check all dimensions, shapes and compass bearings before making any decisions reliant upon them. (ID1133236)

**DAVID ANDREW** | your most valuable asset

as been exercised in the of these particulars, out the property must not be as representations of fact. Prospective applicants and rely upon their own i those of professional s. David Andrew Estates ility for any error contained in these particulars.



**safeagent**