



Guide Price
£625,000

Freehold

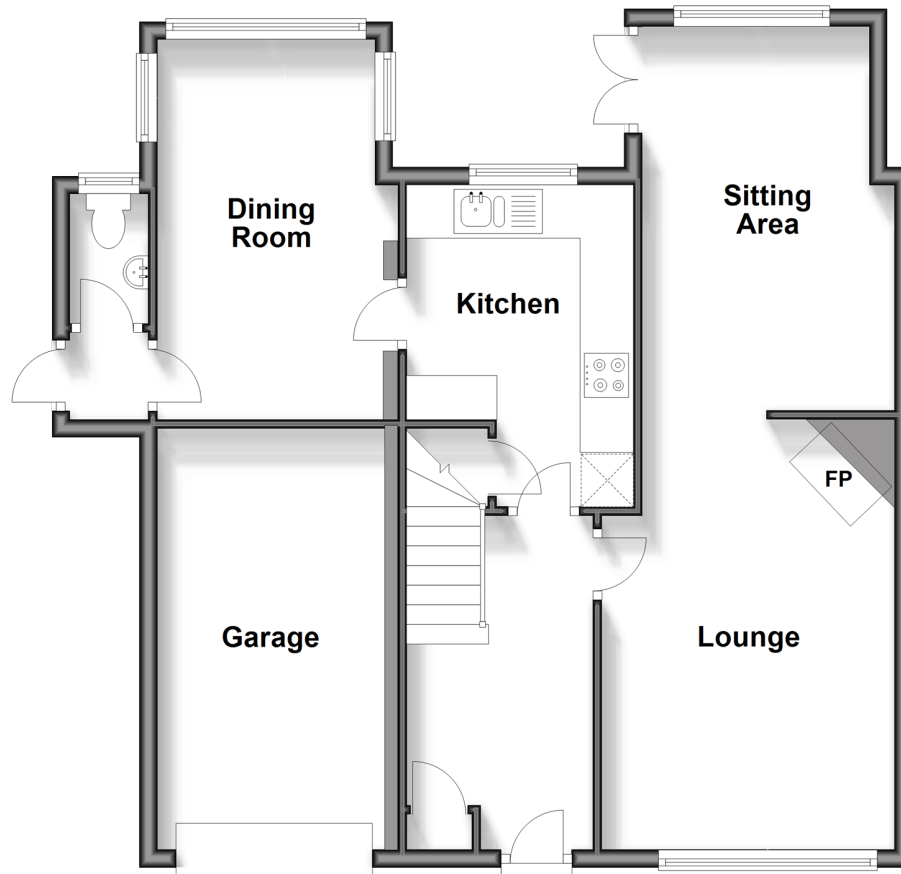
4x  1x  3x 

**Sunte Avenue, Lindfield,
Haywards Heath, West
Sussex, RH16**

cubitt & west
Helping you move forwards

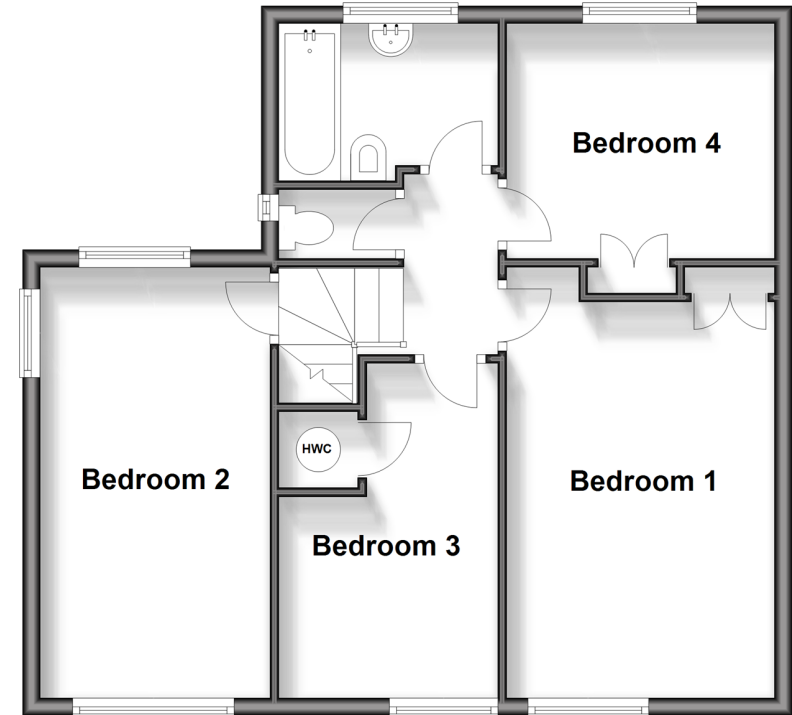
Ground Floor

Approx. 73.8 sq. metres (794.3 sq. feet)



Split Level First Floor

Approx. 55.8 sq. metres (600.9 sq. feet)



Accommodation

GROUND FLOOR

Entrance Hallway

Cloakroom

Lounge: 15'3 x 10'11 (4.65m x 3.33m)

Sitting Area: 14'9 x 8'5 (4.50m x 2.57m)

Kitchen: 12'1 x 8'5 (3.69m x 2.57m)

Dining Room: 14'11 x 9'0 (4.55m x 2.75m)

FIRST FLOOR

Landing

Bedroom 1: 15'11 x 9'10 up to fitted wardrobes (4.85m x 3.00m)

Bedroom 2: 15'6 x 8'5 (4.73m x 2.57m)

Bedroom 3: 12'7 x 8'3 (3.84m x 2.52m)

Bedroom 4: 9'10 x 8'8 up to fitted wardrobes (3.00m x 2.64m)

Bathroom

Separate W/C

OUTSIDE

Front & Rear Garden

Garage: 17'2 x 8'5 (5.24m x 2.57m)

Off- Road Parking



Main features

- Open fire place
- The current owners re-fitted the kitchen
- All bedrooms are doubles
- Secluded rear garden
- The convenience of garage & off road parking for multiple vehicles
- Close to Lindfield's historic High Street and walking distance to train station



Nearest Schools

Primary Schools: Lindfield Primary 0.6 miles, Blackthorns Community Primary, Lindfield 0.7 miles, St Joseph's Catholic Primary, Haywards Heath 1.3 miles

Secondary Schools: Oathall Community College 0.8 miles,



Transport Information

Train Stations: Haywards Heath 1.1 miles, Wivelsfield 4.2 miles, Balcombe 4.9 miles



Address

Sunte Avenue, Lindfield, Haywards Heath, West Sussex, RH16



Directions

For directions to this property please contact us.



cubitt&west
Helping you move forwards

Call Haywards Heath Branch 01444 411132 ■ cubittandwest.co.uk



■ Legal advice should be taken to verify fixtures/fittings, planning, alterations and/or lease details ■ Appliances & services are untested, dimensions are approximate and floor plans are not to scale



22705929/20260223/DD/DD