



Keith  
Ashton

Larchwood Gardens, Pilgrims Hatch  
Brentwood





## 18 LARCHWOOD GARDENS

Pilgrims Hatch Brentwood, CM15 9NE

**\*\*Guide Price; £650,000 - £675,000\*\*** We are delighted to bring to market this five-bedroom family home, ideally situated in the popular Pilgrims Hatch area of Brentwood.

Well-presented throughout and generously extended to the side, rear, and with a loft conversion, the property offers impressive living space perfectly suited to a growing family.

Conveniently located, it is just a short drive from Brentwood High Street and train station, and within easy reach of highly regarded local schools, making it an excellent choice for family living.

- SEMI-DETACHED FAMILY HOME
- GENEROUS GROUND FLOOR LIVING SPACE
- FIVE BEDROOMS
- THREE BATHROOMS
- WITHIN EASY REACH OF HIGHLY REGARDED SCHOOLS
- EXTENDED TO SIDE, REAR & LOFT
- SHORT DRIVE TO BRENTWOOD HIGH STREET & STATION
- LARGE GARDEN

Guide Price £650,000





## Description

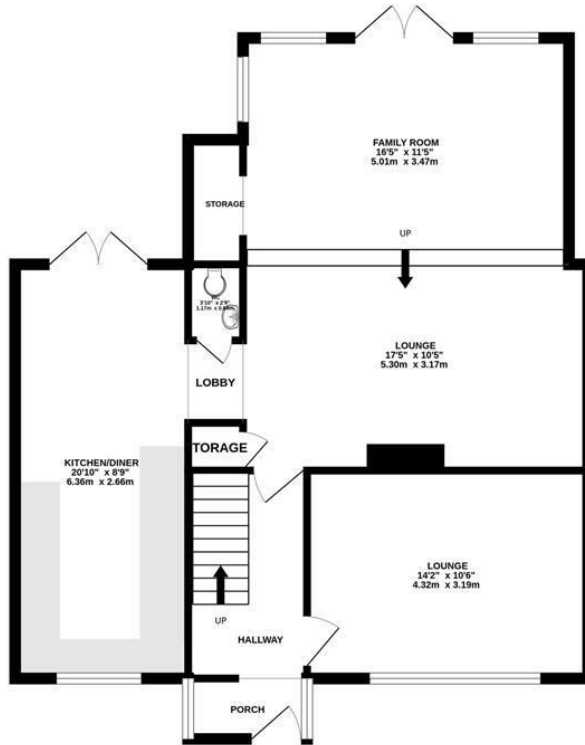
The accommodation begins with a practical porch opening into a welcoming entrance hall. At the front of the home, a bright and comfortable lounge enjoys a large feature window, while to the rear, a spacious open-plan lounge and family room is bathed in natural light from dual-aspect windows and French doors, which lead directly to the garden. The well-appointed kitchen/diner is fitted with an attractive range of eye and base-level units, offering ample worktop space, with a window to the front and further French doors opening to the rear garden. A ground-floor cloakroom completes this level.

On the first floor, the landing provides access to four generously sized bedrooms, with the principal suite enjoying a modern ensuite shower room. A contemporary family bathroom serves the remaining bedrooms. The second floor reveals a large double bedroom with eaves storage and its own stylish ensuite bathroom, creating a perfect retreat.

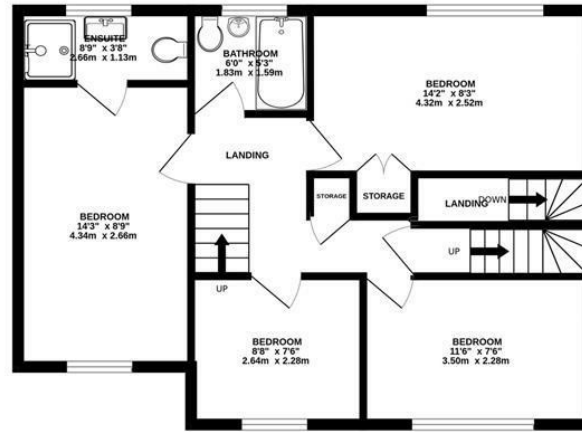
Externally, the property boasts a substantial rear garden, beginning with a paved patio ideal for entertaining, with the remainder laid to lawn and bordered by mature shrubs. To the front, a shingle driveway provides ample off-street parking.



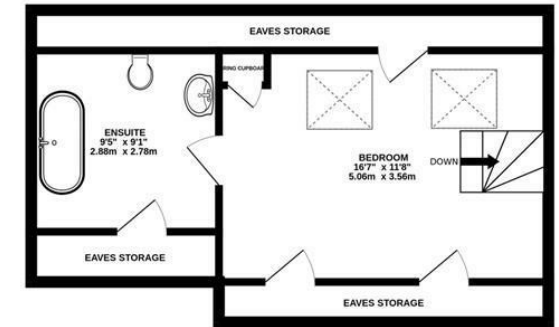
GROUND FLOOR  
821 sq.ft. (76.2 sq.m.) approx.



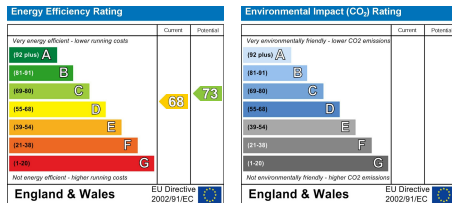
1ST FLOOR  
577 sq.ft. (53.6 sq.m.) approx.



2ND FLOOR  
391 sq.ft. (36.3 sq.m.) approx.



TOTAL FLOOR AREA : 1788 sq.ft. (166.1 sq.m.) approx.  
Measurements are approximate. Not to scale. Illustrative purposes only  
Made with Metropix ©2025



### SERVICES:

Local Authority: Brentwood  
Council tax band: D  
Post code: CM15 9NE

### VIEWING:

Strictly by prior arrangement with Keith Ashton Estate Agents

### OPENING HOURS:

Monday to Friday: 8.45AM - 6.30PM | Saturdays: 9AM - 5.30PM | Sundays: 10AM - 2PM

**MORTGAGE INFORMATION:** We offer the additional facility of an in-house Independent Financial Adviser who will access all mortgage lenders with the purpose of providing you with the benefit of choice. For quotations or comparables please call 01277 260858 or visit our interactive website at [www.mortgagebusiness.net](http://www.mortgagebusiness.net)



We the Agent have not tested any apparatus, fittings or services for this property. The plot size is intended merely as a guide and has not been officially measured or verified by the Agent. Photographs are for illustration only and may depict items which are not for sale or included in the sale of the property. As part of the service we offer we may recommend ancillary services to you which we believe may help you with your property transaction. We wish to make you aware, that should you decide to use these services we will receive a referral fee. For full and detailed information please visit 'terms and conditions' on our website [www.keithashton.co.uk](http://www.keithashton.co.uk)

Brentwood  
Tel. 01277 260858

Village Office  
Tel. 01277 375757

Lettings Office  
Tel. 01277 202200

Explore more @ [www.keithashton.co.uk](http://www.keithashton.co.uk)

