

St. Marys Grove, Chiswick, W4

£1,900PCM (Deposit: £0)

1 1 1



Tax Band: C Furnished: Furnished

Please quote MG1175 for all enquiries.

- 1 Bedroom Flat

Split Level

- Recently refurbished

Open Plan

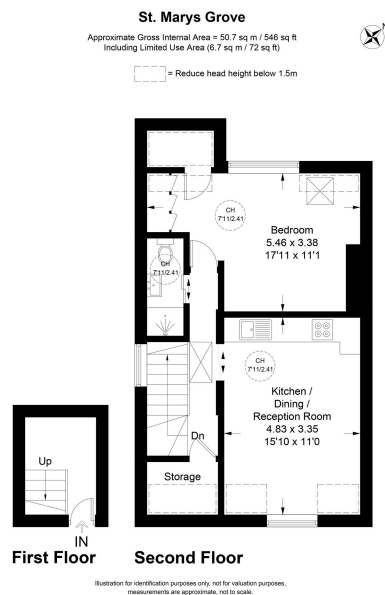
- Furnished

Top Floor

- Quiet Residential Street

Close to transport links

- Short walk to shops and restaurants



Stunning One-Bedroom Split-Level Flat in Grove Park, Chiswick. A beautifully refurbished one-bedroom split-level flat, situated on the top floor of a charming period conversion on a quiet street, moments away from the shops and restaurants of Fauconberg Road.

This stylish property boasts an open-plan reception room with a fully integrated kitchen, a cosy yet elegant living area, a spacious bedroom with built-in storage, and a sleek, modern shower room. Flooded with natural light throughout, the flat offers a bright and airy atmosphere.