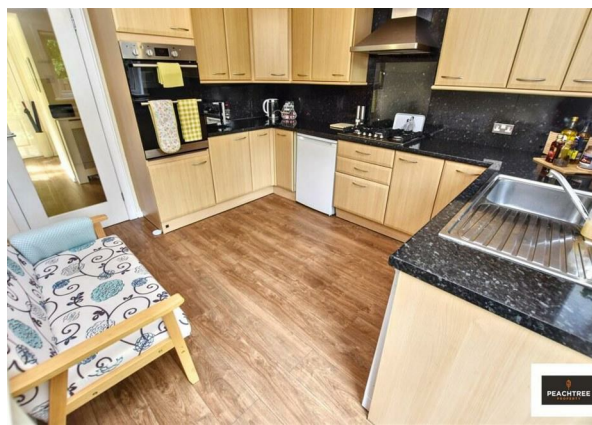
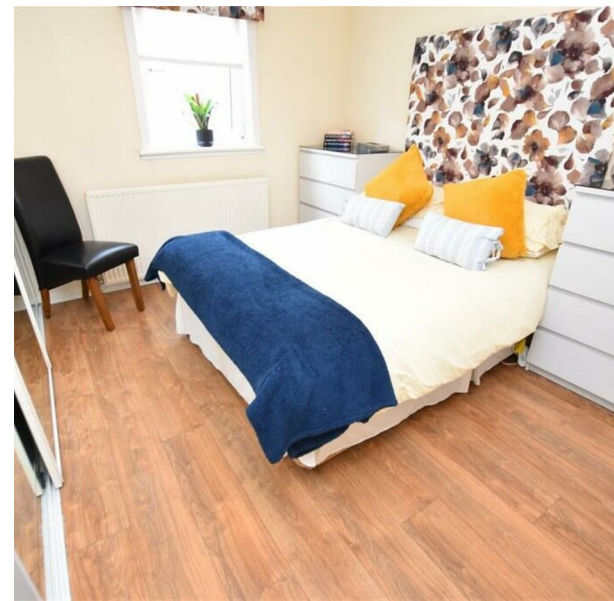


62 Mains Wood, Erskine, PA8 7JW
Offers Over £174,995
EPC Rating: C Council Tax Band: D



Peachtree property welcome to the market, nestled in the charming area of Mains Wood, Erskine, this delightful semi-detached townhouse offering a perfect blend of comfort and space for modern family living.

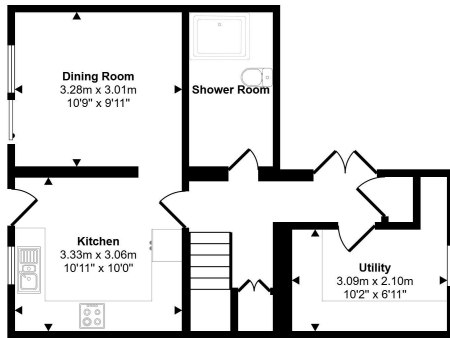
With four generously sized bedrooms, this home is ideal for families seeking room to grow or those who desire extra space for guests or a home office. The layout is thoughtfully designed, ensuring that each room flows seamlessly into the next, creating a warm and inviting atmosphere throughout.

The property retains a classic charm while offering the potential for personalisation to suit your tastes.

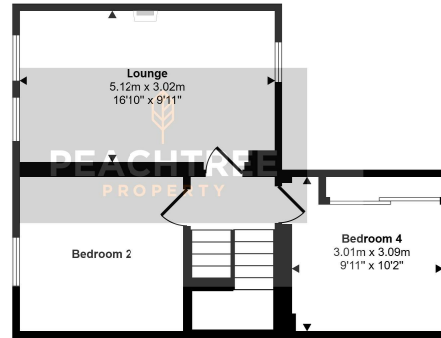


28 Hairst Street Hairst St
Renfrew
PA4 8QY
0141 577 1111
info@peachtreeproperty.co.uk

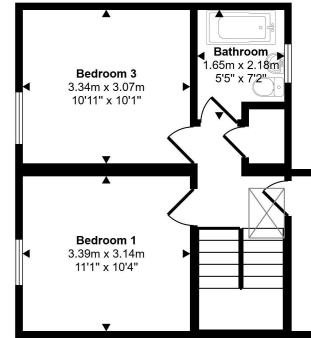
Approx Gross Internal Area
123 sq m / 1323 sq ft



Ground Floor
Approx 44 sq m / 472 sq ft



First Floor
Approx 43 sq m / 468 sq ft



Second Floor
Approx 36 sq m / 384 sq ft

This floorplan is only for illustrative purposes and is not to scale. Measurements of rooms, doors, windows, and any items are approximate and no responsibility is taken for any error, omission or mis-statement. Icons of items such as bathroom suites are representations only and may not look like the real items. Made with Made Snappy 360.

Energy Efficiency Rating		Current	Potential
Very energy efficient - lower running costs			
(92 plus) A			
(81-91) B			
(69-80) C		72	77
(55-68) D			
(39-54) E			
(21-38) F			
(1-20) G			
Not energy efficient - higher running costs			
Scotland	EU Directive 2002/91/EC		