



9

Larchfield, Colquhoun Street, Helensburgh, Argyll And Bute. G84 9JG





9

Larchfield, Colquhoun Street, Helensburgh, Argyll And Bute. G84 9JG



Located on Colquhoun Street "Larchfield" is a magnificent development of luxury apartments which were converted by Cala Homes in 2000. Originally part of Lomond School the traditional building dates back to 1858 where apartment 9 is positioned on the first floor.

Internally the apartment is in beautiful condition having just been extensively refurbished over the last two years. The building itself is accessed via a secure door entry system with the communal areas having just been re-decorated and re-carpeted. On entering the apartment itself there is an amazing entrance hallway at just under forty-feet in length, flooded in natural light with views over the central courtyard. The hallway also has a large store cupboard which is home to the brand-new combi-boiler. The lounge is east facing with views over Colquhoun Street and a neighbouring blossom tree. The lounge also has ample space for a dining table and chairs if required. The kitchen has been fully re-fitted with a stunning units and solid wooden worktops by Wren. The kitchen has a range of integral appliances and additional space for free-standing white-goods. The apartment has two large double bedrooms both of which have built-in wardrobes with the main bedroom just having had bespoke handmade wardrobe doors fitted. The bathroom has also been transformed with a luxurious suite, contemporary tiling and brushed brass fittings.

The attention to detail throughout the property is evident with no expense spared on the fixtures and fittings. The chosen colours have been selected to maximise the light in each space with many of the paints from Farrow & Ball.

Externally Larchfield sits within wonderful communal grounds which are beautifully tended and also include private communal parking. The development is maintained by a Glasgow based factor who also organise the communal buildings insurance. EPC Band C, Council Tax Band E



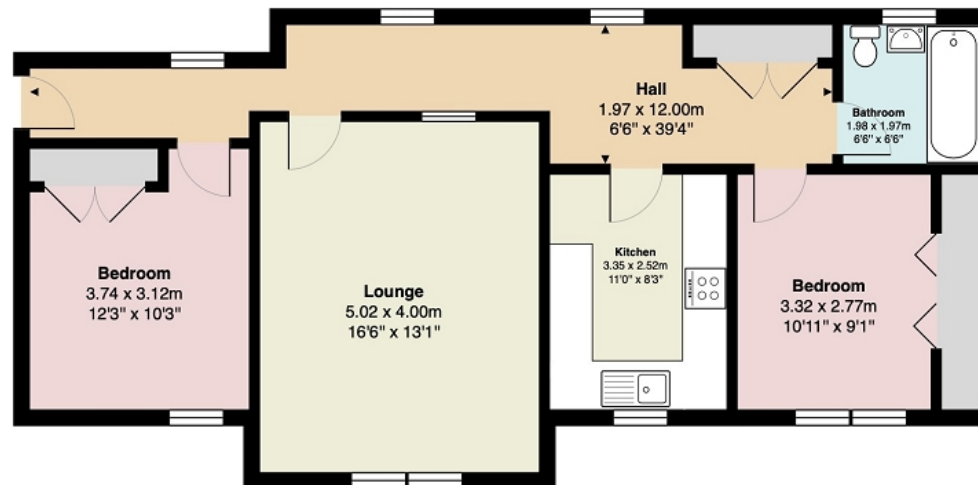
9
Larchfield, Colquhoun Street, Helensburgh, Argyll And Bute. G84 9JG





Measurements

Hallway	39' 04" Max x 6' 06" Max or 11.99m Max x 1.98m Max
Lounge	16' 06" x 13' 01" or 5.03m x 3.99m
Kitchen	11' 0" x 8' 03" or 3.35m x 2.51m
Bedroom 1	10' 11" x 9' 01" or 3.33m x 2.77m
Bedroom 2	12' 03" Max x 10' 03" Max or 3.73m Max x 3.12m Max
Bathroom	6' 06" x 6' 06" or 1.98m x 1.98m



All measurements are approximate and for display purposes only

Contact our office for further details



rightmove 
find your happy

NOTE: These details have been prepared for guidance. If there is any point which you find misleading please contact McArthur Stanton where further information is available. Measurements have been taken from wall to wall, unless otherwise stated, and have been recorded by use of a sonic beam. Services and appliances not tested. Details have been prepared by April 2026. If required, we can arrange for a property market appraisal to be carried out on your existing property.

9

Larchfield, Colquhoun Street, Helensburgh, Argyll And Bute. G84 9JG

