



WESTFIELDS AVENUE, SW13

£1,015,000

Victorian freehold cottage
Three bedrooms
Spacious reception room
Modern kitchen
Private garden
Little Chelsea

@marshandparsons
marshandparsons.co.uk

MARSH &
PARSONS



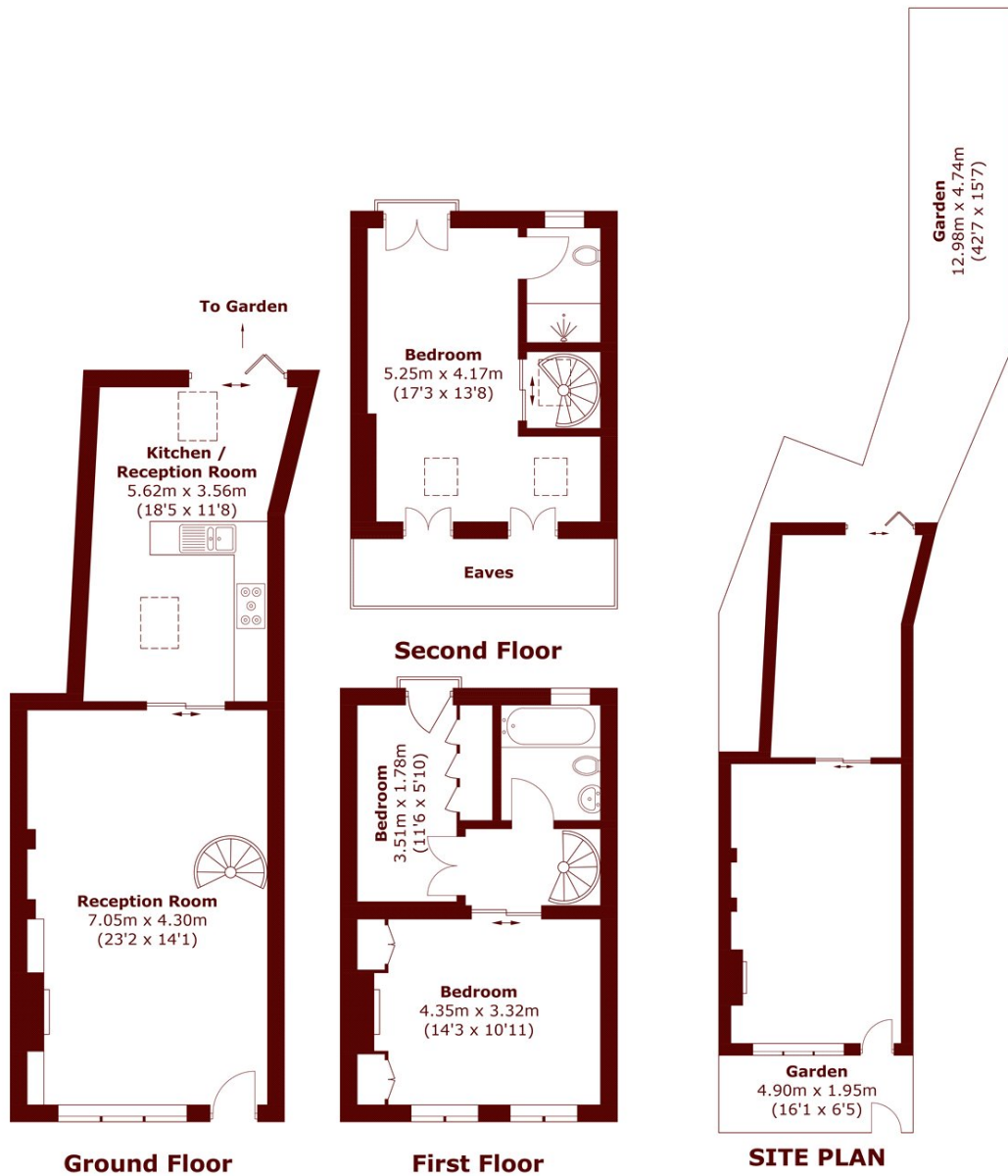
ABOUT THE PROPERTY

Marsh and Parsons are proud to present this Victorian terraced family house which has been extended and modernised by the existing owners.

The property comprises on front garden, spacious large double reception room with feature fireplace, through floor to ceiling sliding doors the property flows into an open plan modern fitted kitchen with a further reception space beyond the kitchen. Fashionable bi-fold doors opening onto a private garden. Upstairs, there are three double bedrooms with the principal bedroom spanning



STEP INSIDE WESTFIELDS AVENUE



Total area (approx.): 103.0 sq. m (1,108.6 sq. ft)
(Excluding Eaves)

Barnes & East Sheen
020 8563 8333

Energy Rating: D We aim to make our particulars both accurate and reliable. However, they are not guaranteed; nor do they form part of an offer or contract. If you require clarification on any points then please contact us, especially if you're traveling some distance to view. Please note that appliances and heating systems have not been tested and therefore no warranties can be given as to their good working order

**MARSH &
PARSONS**