

Unit 6 13 Burton Place, Manchester, Lancashire, M15 4PT

Tel: 0161 637 8336

Email: [contactus@ascendproperties.com](mailto:contactus@ascendproperties.com)

[www.ascendproperties.com](http://www.ascendproperties.com)

# Ascend

Built on higher standards



Alto, Sillavan Way, Salford

£1,350 Per Month

Welcome to Alto, a well-established and sought-after development offering spacious, great-value city living just moments from Manchester city centre.

This two-bedroom apartment provides generous room sizes throughout, with an open-plan kitchen and living area that's ideal for both relaxing and entertaining. The apartment offers a welcoming, modern feel, complete with a bright main bathroom and a private ensuite to the master bedroom making it a great option for professional sharers or couples alike. Residents also benefit from a central courtyard and an on-site concierge, adding both convenience and peace of mind.

Perfectly positioned within walking distance of Spinningfields, Deansgate and the wider city centre, Alto offers affordable, comfortable living right in the heart of the action, without compromising on space or style.

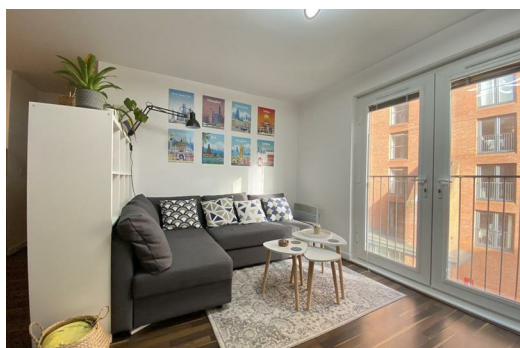
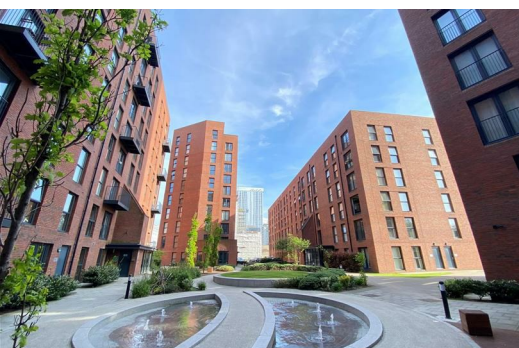
If you're interested in having a closer look, or have any questions, do get in touch. And just so you know, the pictures for this apartment are for marketing purposes only. The internal fixtures, fittings and furnishings may vary.

Available 1st June 2026

Deposit: £1550

Council Tax Band: C

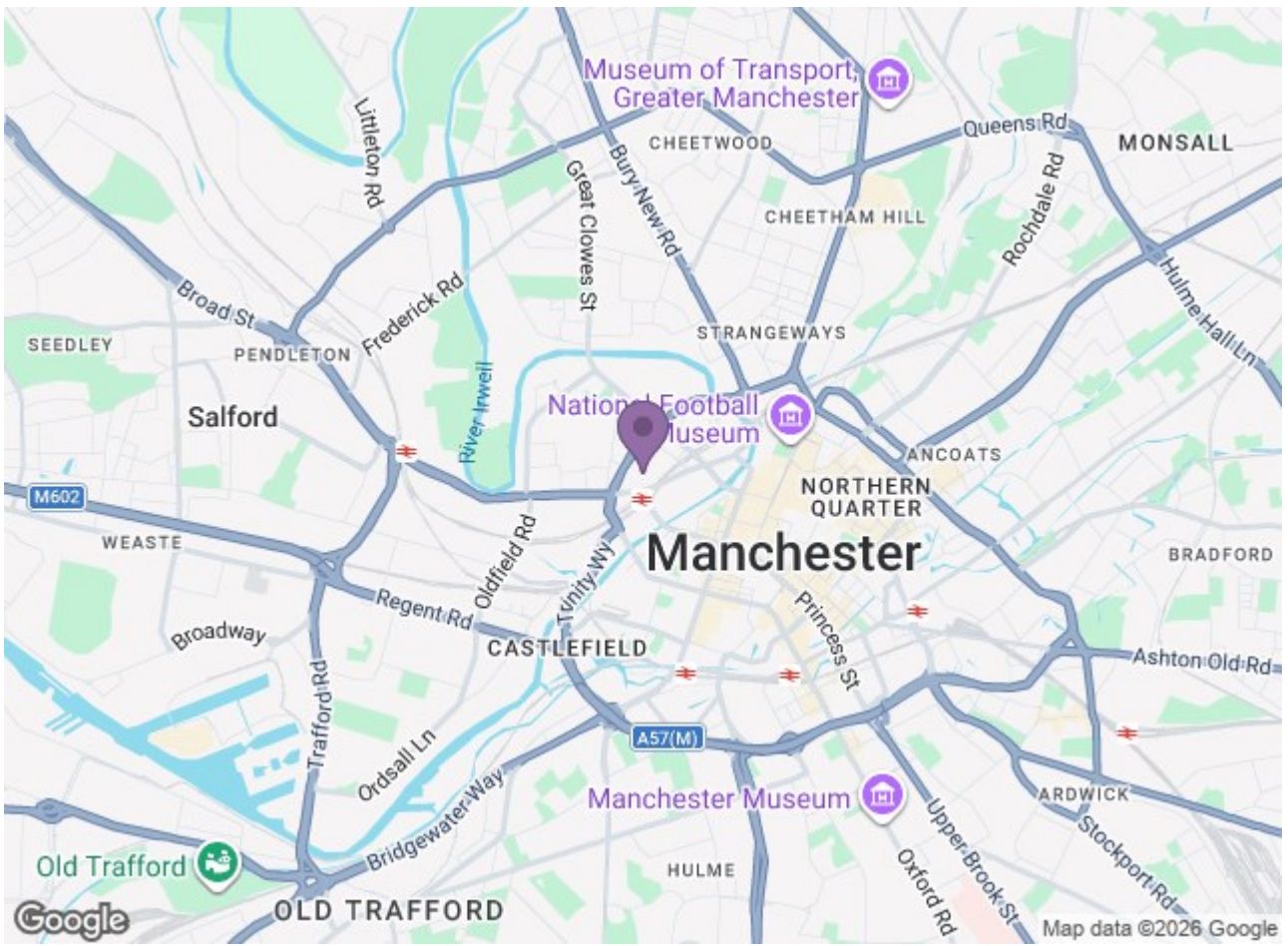
Furnished





Total floor area 58.5 sq.m. (629 sq.ft.) approx

This floor plan is for illustrative purposes only. It is not drawn to scale. Any measurements, floor areas (including any total floor area), openings and orientation are approximate. No details are guaranteed, they cannot be relied upon for any purpose and they do not form part of any agreement. No liability is taken for any error, omission or misstatement. A party must rely upon its own inspection(s). Plan produced for Purple Bricks. Powered by www.localagent.com



Energy Efficiency Rating		Environmental Impact (CO <sub>2</sub> ) Rating	
Current	Potential	Current	Potential
71	83	D	C

England & Wales

**Ascend**  
Built on higher standards