



## Chelmsford Road, Walthamstow, London

Ideally positioned on this much sought after residential street close to Walthamstow Central is this three-bedroom Victorian terraced home. Offered to the market with no onward chain, the property is a true blank canvas, offering excellent scope for modernisation, improvement and extension, subject to the necessary planning permissions.

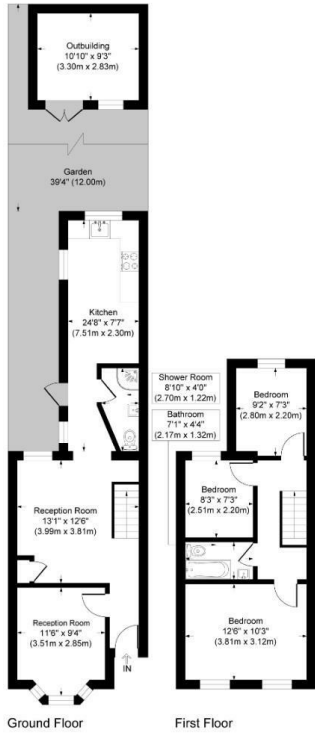
The attractive brick frontage and smart tiled pathway create an inviting first impression. Internally, the accommodation begins with a bright bay-fronted reception room to the front of the property, followed by a second reception room, providing flexible living and entertaining space. To the rear, the spacious L-shaped kitchen enjoys direct access to the garden and is complemented by a convenient ground floor shower room.

Upstairs, the first floor comprises three well-proportioned bedrooms alongside a family bathroom suite.

The rear garden is designed for low-maintenance enjoyment, featuring a decked seating area leading onto a generous paved garden, with a substantial summer house positioned at the rear—ideal for storage, a home office or hobby space.

- Three Bedroom Mid Terraced Victorian House
- Prime Central Walthamstow Location
- Private Rear Garden With Summerhouse
- 0.5m To Walthamstow Central Station
- Two Bathrooms
- EPC - D
- Council Tax - C
- 9.1 Sq Ft - 970 Sq M
- No Onward Chain
- Excellent Potential

**£750,000**



## Chelmsford Road

Approximate Gross Internal Area  
 Ground Floor = 45.7 sq m / 492 sq ft  
 First Floor = 35.1 sq m / 378 sq ft  
 Outbuilding = 9.3 sq m / 100 sq ft  
 Total = 90.1 sq m / 970 sq ft

This plan is for layout guidance only. Not drawn to scale unless stated. Windows and door openings are approximate. Whilst every care is taken in the preparation of this plan, please check all dimensions, shapes and compass bearings before making any decisions reliant upon them.

powered by:  
**THE360IMAGE**  
 www.the360image.co.uk

Your paragraph text

