



## Hampton Road, TW12

### £850,000

Full of light, space, and character, this lovely family home offers over 1,600 sq ft of beautifully balanced living space in one of the area's most desirable spots for schools and proximity to Laurel Road's gate into Bushy Park.

Hampton Road is centrally located for Teddington and Fulwell Stations and many local shops and cafés. There is easy access to both Teddington, Twickenham and the A316, whilst Bushy Park is a stroll away.

### Features

- Four Bedrooms
- Loft Converted
- South Facing Garden
- Chain Free
- Close To Bushy Park
- Teddington Borders





## Hampton Road, TW12

The ground floor centres around a welcoming bay-fronted living room, perfect for relaxing or hosting friends. The kitchen flows naturally into a bright conservatory, creating an easy connection to the garden, a calm, green space that feels made for summer evenings.

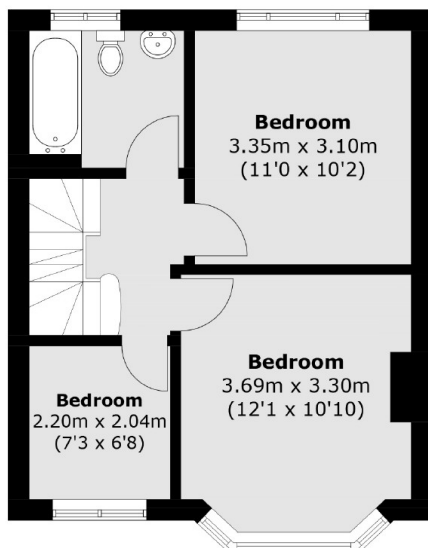
Upstairs, there are three comfortable bedrooms, each with its own charm. The first floor includes a generous double, a cosy guest room, and a versatile third bedroom that could be a home office or playroom, along with a spacious family bathroom. On the top floor, the master suite feels peaceful and private, with plenty of light and a smart en-suite shower room.

Downstairs, the basement is an unexpected bonus a flexible space that works beautifully as a cinema room, games room, or simply somewhere to unwind. Outside, the garden provides a gentle backdrop to family life - private, practical, and easy to enjoy all year round.

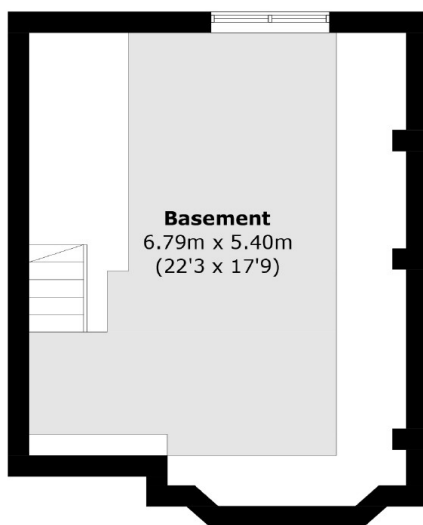




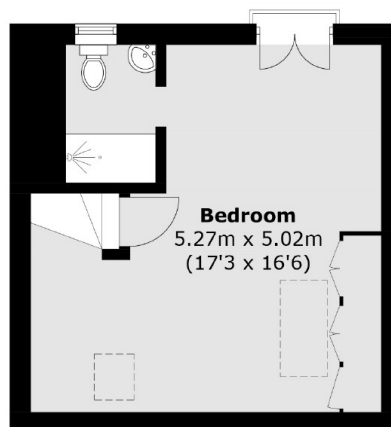
# Hampton Road, Hampton Hill, TW12



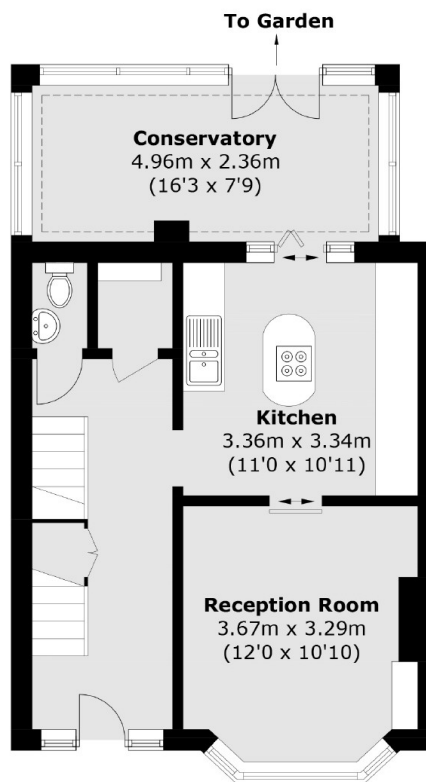
**First Floor**



**Basement**



**Second Floor**



**Ground Floor**

Total area (approx.): 149.8 sq. m (1,612.5 sq. ft)  
(Including Basement)