

4  2  2 

**Freehold : Council Tax Band D
EPC Rating D**

Fairmead Road, Saltash

BELVOIR!

Guide price £425,000



Key Features

- > Spacious Four Bedroom Detached Family Home
- > Generous Plot With Large Front And Rear Gardens
- > No Onward Chain For A Straightforward Purchase
- > Three Double Bedrooms And A Good Sized Single
- > Principal Bedroom With En-Suite And Far-Reaching Views

A spacious four bedroom detached family home occupying a generous plot in a popular location and offered for sale with no onward chain. Conveniently situated within walking distance of local amenities, including the highly regarded Ploughboy Inn and a SPAR convenience store, the property also benefits from excellent access to the A38, making it ideal for commuters travelling into Plymouth or further into Cornwall.

The well-proportioned accommodation briefly comprises a welcoming entrance hallway, a generous dual-aspect living room with large windows and a feature fireplace, a separate dining room, a modern fitted kitchen, a handy utility area and a downstairs cloakroom/WC. An integrated garage with light and power provides useful storage or workshop space.



Upstairs, there are four good sized bedrooms, including three doubles and a generous single. The principal bedroom enjoys far-reaching views, a built-in cupboard and an en-suite shower room. A family bathroom serves the remaining bedrooms.

Externally, the property benefits from driveway parking, a spacious front garden and a private enclosed rear garden designed for both relaxation and entertaining. The rear garden features a lawned area, gravelled seating space, composite decking and a premium hot tub positioned beneath a charming wooden pergola adorned with a mature grapevine.

A fantastic family home offering generous living space, versatile accommodation and excellent outdoor amenities in a sought-after setting.

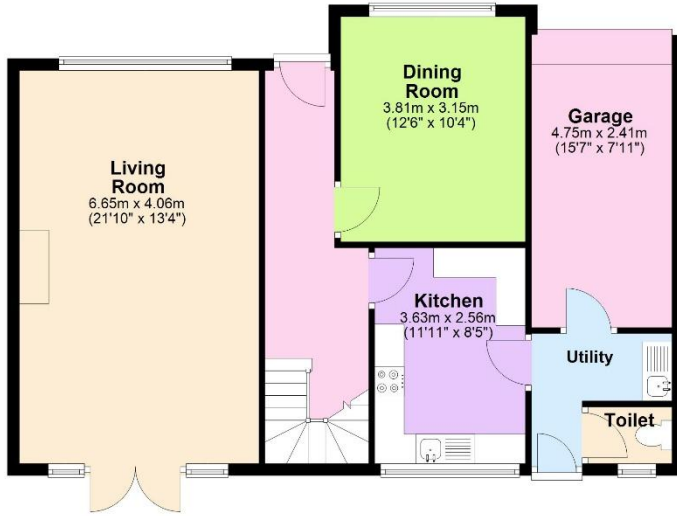
Saltash is a thriving Cornish town situated on the banks of the River Tamar, often referred to as the "Gateway to Cornwall" thanks to its excellent transport links to Plymouth and beyond. The town offers a superb range of everyday amenities including supermarkets, independent shops, cafes, restaurants, public houses, healthcare facilities and highly regarded primary and secondary schools.

The picturesque waterfront provides beautiful riverside walks and stunning views of the iconic Tamar and Brunel Bridges, while nearby countryside and coastal destinations offer endless opportunities for outdoor recreation. Saltash also benefits from a mainline railway station and easy access to the A38, making it a popular choice for commuters seeking the perfect balance between town convenience and Cornish lifestyle.

Combining a strong community atmosphere, excellent local facilities and convenient transport connections, Saltash continues to be one of South East Cornwall's most sought-after places to live.

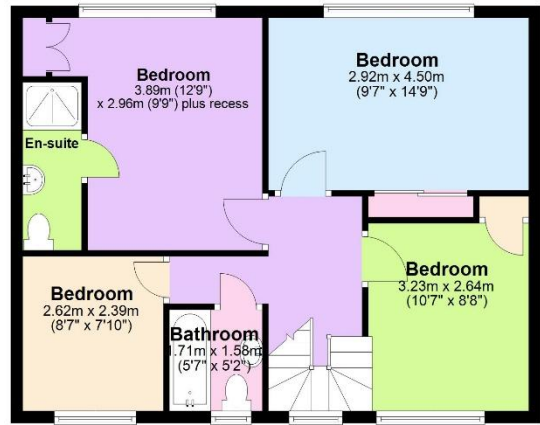
Ground Floor

Approx. 78.1 sq. metres (840.7 sq. feet)



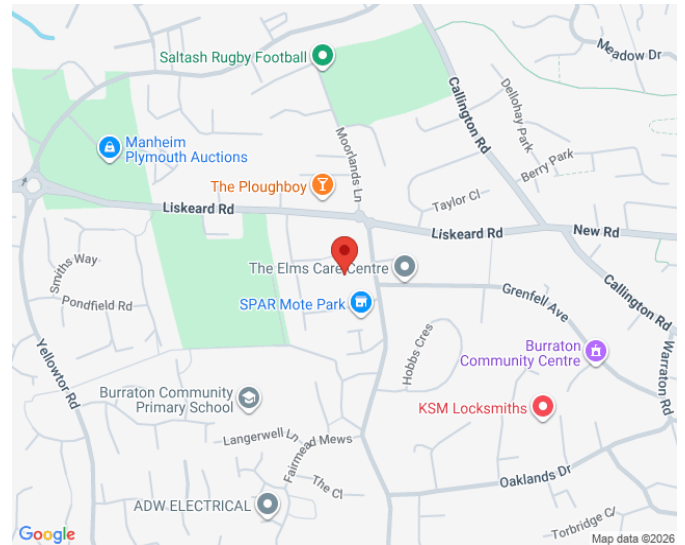
First Floor

Approx. 57.1 sq. metres (614.7 sq. feet)



Total area: approx. 135.2 sq. metres (1455.5 sq. feet)

Score	Energy rating	Current	Potential
92+	A		
81-91	B		
69-80	C		79 C
55-68	D	67 D	
39-54	E		
21-38	F		
1-20	G		



We endeavour to make our sales particulars accurate and reliable, however, they do not constitute or form part of an offer or any contract and none is to be relied upon as statements of representation or fact. Any services, systems and appliances listed in this specification have not been tested by us and no guarantee as to their operating ability or efficiency is given. All measurements have been taken as a guide to prospective buyers only, and are not precise. If you require clarification or further information on any points, please contact us, especially if you are travelling some distance to view. Fixtures and fittings other than those mentioned are to be agreed with the seller by separate negotiation.

Contact us today to arrange a viewing...

BELVOIR!

belvoir.co.uk/offices/plymouth

01752 850440