

1 Bed Apartment

£750 PCM

📍 Watson Street, Derby, DE1 3PJ



www.phillipsandco.co.uk | 01332 40 25 25

**Phillips
& Co**
EST. 2012
MY PAD GROUP

1 Bed Apartment

£750 PCM

📍 Watson Street, Derby, DE1 3PJ

AVAILABLE END OF NOVEMBER - FURNISHED - £173.76 HOLDING DEPOSIT SECURES - COUNCIL TAX BAND A - ENERGY RATING C - LIGHT AND SPACIOUS STYLISH FIRST FLOOR APARTMENT - SUPERBLY REFURBISHED - CLOSE SIX STREETS / KEDLESTON ROAD AND UNIVERSITY - CAR PARKING SPACE - ONE DOUBLE BEDROOM - GAS CENTRAL HEATING - UPVC DOUBLE GLAZING - FITTED KITCHEN - MODERN BATHROOM - PRIVATE POSITION WITH MAINTAINED GARDEN AREA. TOTAL DEPOSIT £865.38.

Reception Hall

With double glazed entrance door and staircase to first floor hallway.

Large Useful Store 7'9" x 3'5" (2.37 x 1.05)

Large useful store with double glazed window.

Sitting Room 14'8" x 10'4" (4.48 x 3.17)

Generous sized with radiator, double glazed window and lounge furniture.



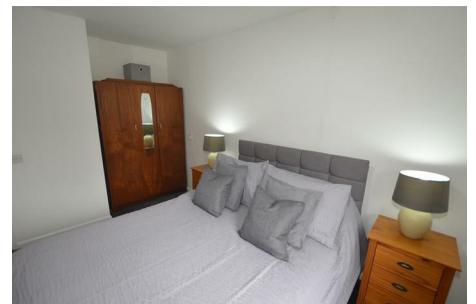
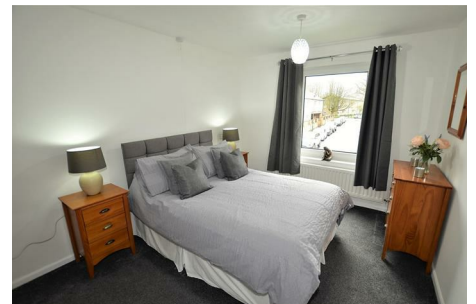
Kitchen 7'9" x 7'8" (2.37 x 2.34)

Fitted kitchen with a range of white wall and base units, roll top work surfaces, electric ceramic hob, electric single oven, washing machine, under counter fridge and freezer, breakfast bar area and storage cupboard.



Bedroom 11'8" x 9'8" (3.58 x 2.95)

Having double glazed window, radiator and bedroom furniture.



Bathroom 7'9" x 3'6" (2.37 x 1.07)

Full bathroom suite comprising; low level w.c, wash basin and bath with shower attachment, double glazed window and radiator.

1 Bed Apartment

£750 PCM

 Watson Street, Derby, DE1 3PJ



Outside

On site parking and enclosed area with a drying area.



You may download, store and use the material for your own personal use and research. You may not republish, retransmit, redistribute or otherwise make the material available to any party or make the same available on any website, online service or bulletin board of your own or of any other party or make the same available in hard copy or in any other media without the website owner's express prior written consent. The website owner's copyright must

