

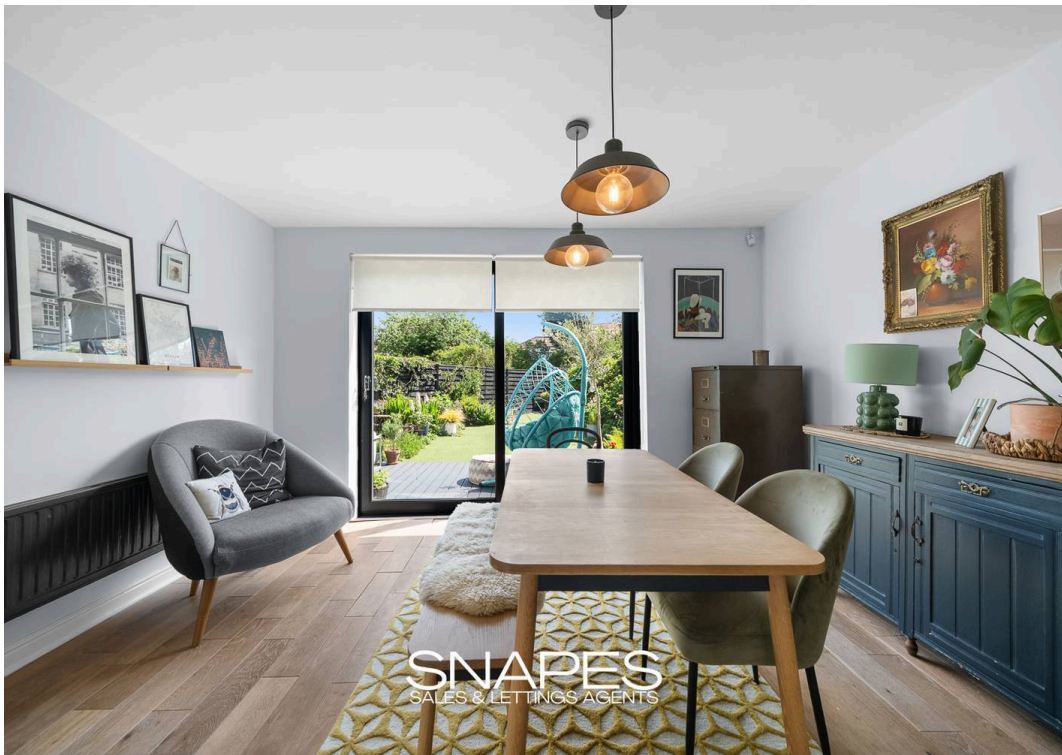


Linden Road, Cheadle Hulme, SK8 5NB

£445,000

SNAPES
SALES & LETTINGS AGENTS





Linden Road

Cheadle Hulme, Cheadle

Council Tax band: D

Tenure: Freehold

- Immaculately Presented & Modernised Three Bedroom Semi Detached
- Porch & Entrance Hallway
- Two Well Proportioned Reception Rooms
- Stylish Kitchen
- Three Good Sized Bedrooms
- Modern Bathroom & WC
- Nicely Sized Private Rear Garden
- Fantastic Frontage, Ample Driveway Parking With EV Charger & Detached Garage
- Freehold
- Catchment For Oak Tree Primary & Cheadle Hulme High School





Porch

Entrance Hallway

Living Room

11' 11" x 13' 9" (3.64m x 4.19m)

Dining Room

14' 1" x 10' 11" (4.29m x 3.33m)

Kitchen

7' 5" x 10' 11" (2.27m x 3.33m)

Master Bedroom

11' 9" x 13' 9" (3.57m x 4.19m)

Bedroom Two

11' 9" x 10' 11" (3.57m x 3.33m)

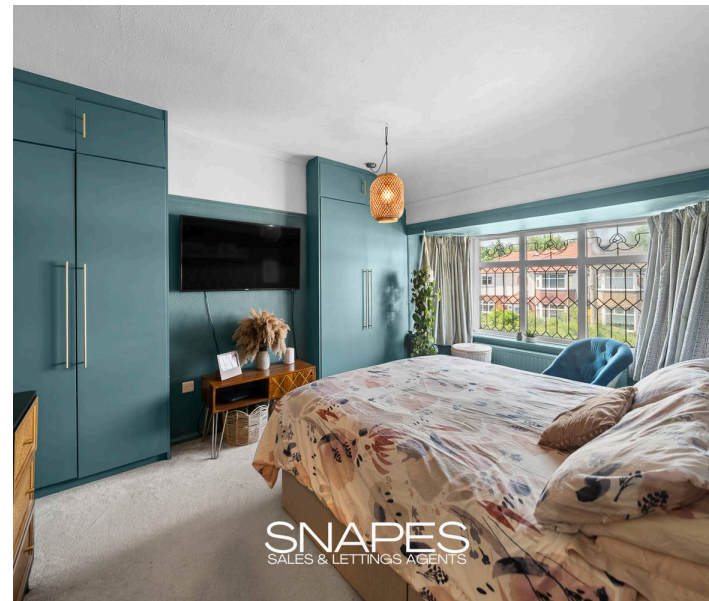
Bedroom Three

9' 9" x 8' 2" (2.97m x 2.50m)

WC

Bathroom

5' 9" x 5' 9" (1.75m x 1.76m)





Ground Floor
Area: 48.6 m² ... 523 ft²

First Floor
Area: 47.4 m² ... 511 ft²

Total Area: 96.0 m² ... 1034 ft²

All measurements are approximate and for display purposes only

Cheadle Hulme Office

Andrew Snape Estate Agents, 31 Station Road – SK8 5AF

0161 485 2244 • cheadlehulme@snapes.co.uk • www.snapes.co.uk/