



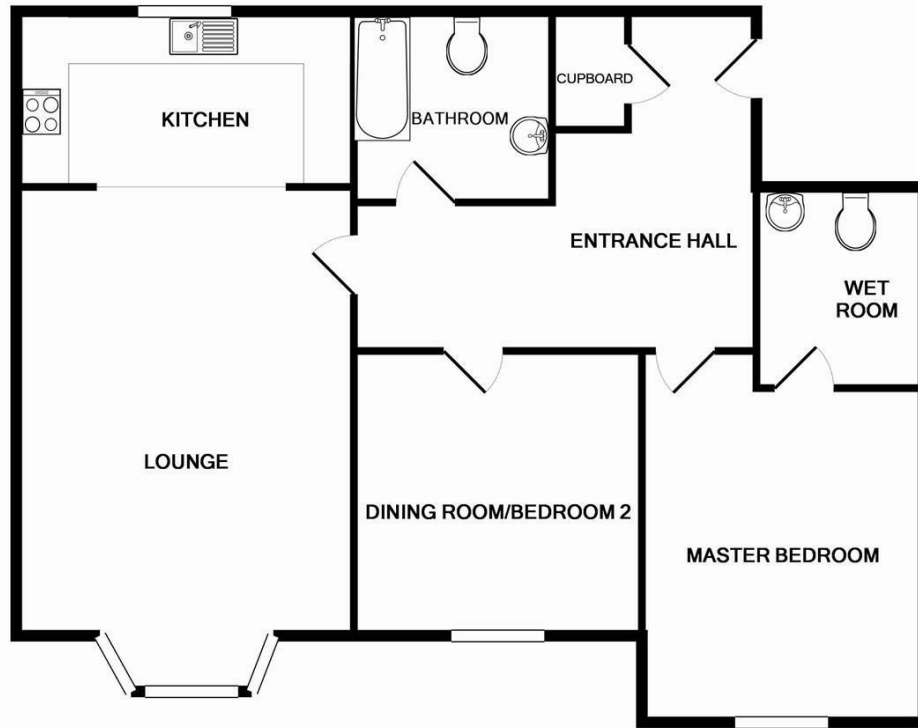
## 6 HATTERS CLOSE

BRISTOL, BS36 1PD

£1,250 PCM

- & Currently being decorated to include new flooring
- \* 2 DOUBLE Bedrooms
- \* Family Bathroom & En-suite
- \* Gas Central Heating
- \* Communal Gardens
- \* 2 Parking Spaces
- \* Unfurnished
- \* Ground Floor Apartment
- \* Available Immediately





Whilst every attempt has been made to ensure the accuracy of the floor plan contained here, measurements of doors, windows, rooms and any other items are approximate and no responsibility is taken for any error, omission, or mis-statement. This plan is for illustrative purposes only and should be used as such by any prospective purchaser. The services, systems and appliances shown have not been tested and no guarantee as to their operability or efficiency can be given  
 Made with Metropix ©2015



Energy Efficiency Rating		Current	Potential
Very energy efficient - lower running costs			
(92 plus) A			
(81-91) B		85	87
(69-80) C			
(55-68) D			
(39-54) E			
(21-38) F			
(1-20) G			
Not energy efficient - higher running costs			
England & Wales		EU Directive 2002/91/EC	



4 Flaxpits Lane  
 Winterbourne  
 Bristol  
 Avon  
 BS36 1JX

01454 252140  
 info@aj-homes.co.uk  
<https://www.aj-homes.co.uk>

Agents Note: Whilst every care has been taken to prepare these particulars, they are for guidance purposes only. All measurements are approximate and are for general guidance purposes only and whilst every care has been taken to ensure their accuracy, they should not be relied upon and potential buyers/tenants are advised to recheck the measurements