



Field House Close | Acklington | NE65 9PE

£340,000

Beautifully updated three-bedroom detached bungalow on a quiet street in Acklington, just moments from the Northumberland coast. Featuring a brand-new contemporary kitchen (2025), new windows, Hive-controlled heating, stylish Amtico flooring and a west-facing garden, this move-in-ready home also offers built-in wardrobes to all bedrooms and an attached garage.

RMS | Rook
Matthews
Sayer



DETACHED BUNGALOW

THREE BEDROOMS

QUIET RESIDENTIAL LOCATION

BUILT-IN WARDROBES

WEST FACING REAR GARDEN

INTEGRAL GARAGE

**BEAUTIFULLY PRESENTED – NEW
AMTICO FLOORING & NEUTRAL DECOR**

**STYLISH NEW KITCHEN WITH
NEW WINDOWS & RADIATORS**

For any more information regarding the property please contact us today

9 Field House Close, Acklington, NE65 9PE

Situated on a quiet residential street in the sought-after coastal village of Acklington, this beautifully presented three-bedroom detached bungalow offers stylish, single-level living in a peaceful Northumberland setting.

The property is neutrally decorated throughout and has been thoughtfully updated to create a modern and comfortable home. At its heart is a newly fitted (2025) contemporary white kitchen, featuring integrated appliances and a useful adjoining utility area. Newly installed Amtico flooring flows seamlessly through the hallway, living room and kitchen, enhancing the sense of space and cohesion.

The spacious living room provides an excellent setting for both relaxing and entertaining, while the three well-proportioned bedrooms each benefit from built-in double wardrobes, offering excellent storage. The bathroom is fitted with a modern white suite, completing the home's fresh and stylish interior.

Further improvements include new windows installed in 2025 and a Hive-controlled gas central heating system with newly fitted radiators, ensuring comfort and energy efficiency.

Externally, the property enjoys a west-facing rear garden, ideal for afternoon and evening sun, along with additional space to the side of the property offering potential for further landscaping or storage. An attached garage provides secure parking or additional storage.

This is a superb opportunity to acquire a move-in-ready bungalow in a desirable coastal village location, offering modern comforts in a tranquil setting.

ENTRANCE HALL

Double-glazed composite entrance door & window | Amtico flooring | Storage cupboard | Doors to living room, kitchen, bedrooms & bathroom

LIVING ROOM 12' 9" x 16' 8" (3.88m x 5.08m)

UPVC double-glazed window | Radiator | Amtico flooring | Coving to ceiling

KITCHEN

8' 4" x 12' 5" plus utility area 9' 5" x 5' 10" (2.54m x 3.78m plus utility area 2.87m x 1.78m)

Range of fitted wall & base units with co-ordinating work surfaces incorporating; single drainer sink, gas hob with extractor hood, double electric oven, integrated fridge freezer, integrated dishwasher, space for tumble dryer & washing machine

UPVC double-glazed windows | UPVC double-glazed door | Amtico flooring | Coving to ceiling | Ceiling downlights | Door to garage | Radiators

BEDROOM ONE (Front) 12' 9" x 11' 3" (3.88m x 3.43m)

UPVC double-glazed window | Radiator | Built-in double wardrobe | Coving to ceiling

BEDROOM TWO (Rear)

12' 6" x 9' 1" plus door recess (3.81m x 2.77m plus door recess)

UPVC double-glazed window | Built-in double wardrobe | Radiator | Coving to ceiling

T: 01665 510044

Branch alnwick@rmsestateagents.co.uk

RMS | Rook
Matthews
Sayer

BEDROOM THREE (Rear) 9' 2" x 8' 10" (2.79m x 2.69m)
 UPVC double-glazed window | Radiator | Built-in double wardrobe | Coving to ceiling

BATHROOM

Bath with mixer tap & handheld shower attachment | Close coupled W.C | Wash-hand basin with vanity cupboard | UPVC double-glazed frosted windows | Tiled-effect wet-wall panelled walls | Amtico flooring

GARAGE 19' 3" x 9' 4" (5.86m x 2.84m)

Up-and-over garage door | Light & power sockets | Wall-mounted Baxi Combi Boiler | Electric fuse box | Steps up to door to kitchen

EXTERNALLY

Enclosed rear garden mainly laid to lawn | Patio area | Garden shed

PRIMARY SERVICES SUPPLY

Electricity: Mains
 Water: Mains
 Sewerage: Mains
 Heating: Mains Gas
 Broadband: Fibre to the Premises
 Mobile Signal Coverage Blackspot: No known issues
 Parking: Garage, Driveway & On Street Parking

MINING

The North East region is famous for its rich mining heritage and therefore it will be beneficial to conduct a mining search. Confirmation should be sought from a conveyancer as to its effect on the property, if any.

TENURE

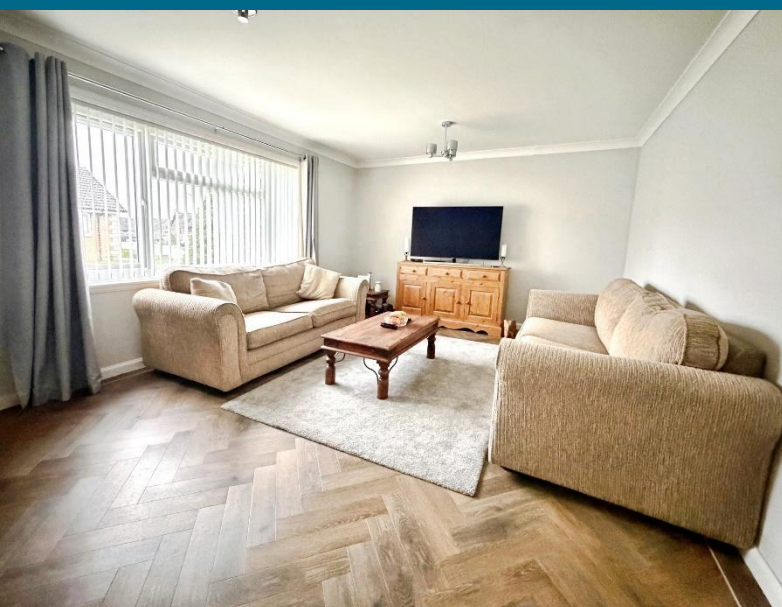
Freehold – It is understood that this property is freehold, but should you decide to proceed with the purchase of this property, the Tenure must be verified by your Legal Adviser.

COUNCIL TAX BAND: C

EPC RATING: C

Score	Energy rating	Current	Potential
92+	A		
81-91	B		85 B
69-80	C	72 C	
55-68	D		
39-54	E		
21-38	F		
1-20	G		

AL009393/DM/TB/16.02.26/V1 7/5/26 MS Amended price



T: 01665 510044

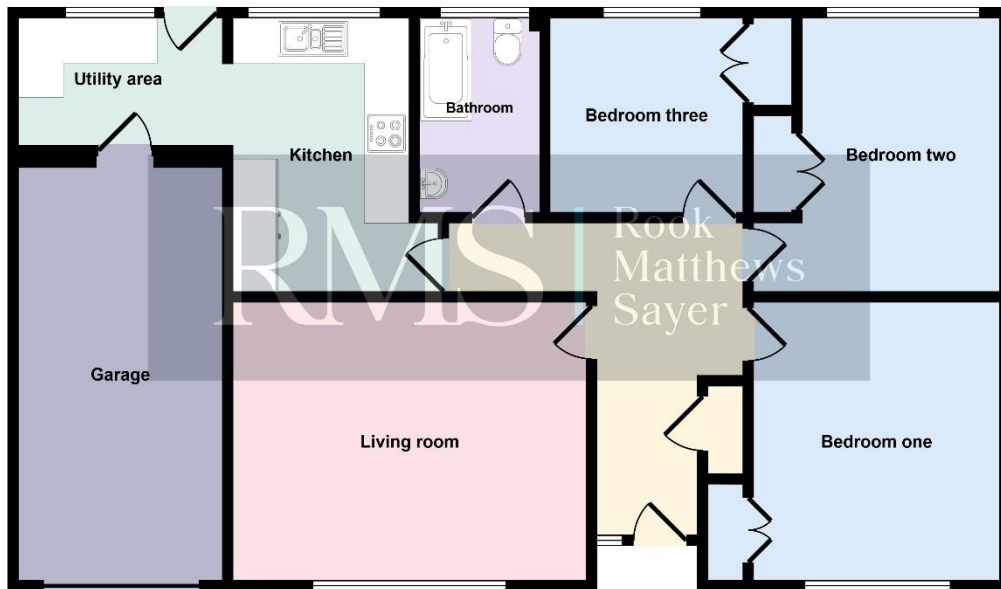
Branch alnwick@rmsestateagents.co.uk

RMS | Rook
 Matthews
 Sayer





Approx Gross Internal Area
96 sq m / 1030 sq ft



Floorplan

This floorplan is only for illustrative purposes and is not to scale. Measurements of rooms, doors, windows, and any items are approximate and no responsibility is taken for any error, omission or mis-statement. Icons of items such as bathroom suites are representations only and may not look like the real items. Made with Made Snappy 360.

AL009393 VERSION 1

Money Laundering Regulations – intending purchasers will be asked to produce original identification documentation at a later stage and we would ask for your co-operation in order that there will be no delay in agreeing the sale. We will also use some of your personal data to carry out electronic identity verification. This is not a credit check and will not affect your credit score.

Important Note: Rook Matthews Sayer (RMS) for themselves and for the vendors or lessors of this property, whose agents they are, give notice that these particulars are produced in good faith, are set out as a general guide only and do not constitute part or all of an offer or contract. The measurements indicated are supplied for guidance only and as such must be considered incorrect. Potential buyers are advised to recheck the measurements before committing to any expense. RMS has not tested any apparatus, equipment, fixtures, fittings or services and it is the buyer's interests to check the working condition of any appliances. RMS has not sought to verify the legal title of the property and the buyers must obtain verification from their solicitor. No persons in the employment of RMS has any authority to make or give any representation or warranty whatever in relation to this property.



T: 01665 510044

Branch alnwick@rmsestateagents.co.uk

RMS | Rook
Matthews
Sayer