



Mellis Court | | Felixstowe | IP11 2YQ

Guide Price £325,000

NICHOLAS
ESTATES

Key features

- Four Bedrooms
- Two Reception Rooms
- Conservatory
- Driveway & Garage
- Close To Local Shops & Facilities
- No Onward Chain

Description

A four bedroom detached family house situated in Mellis Court at the end of a cul-de-sac.



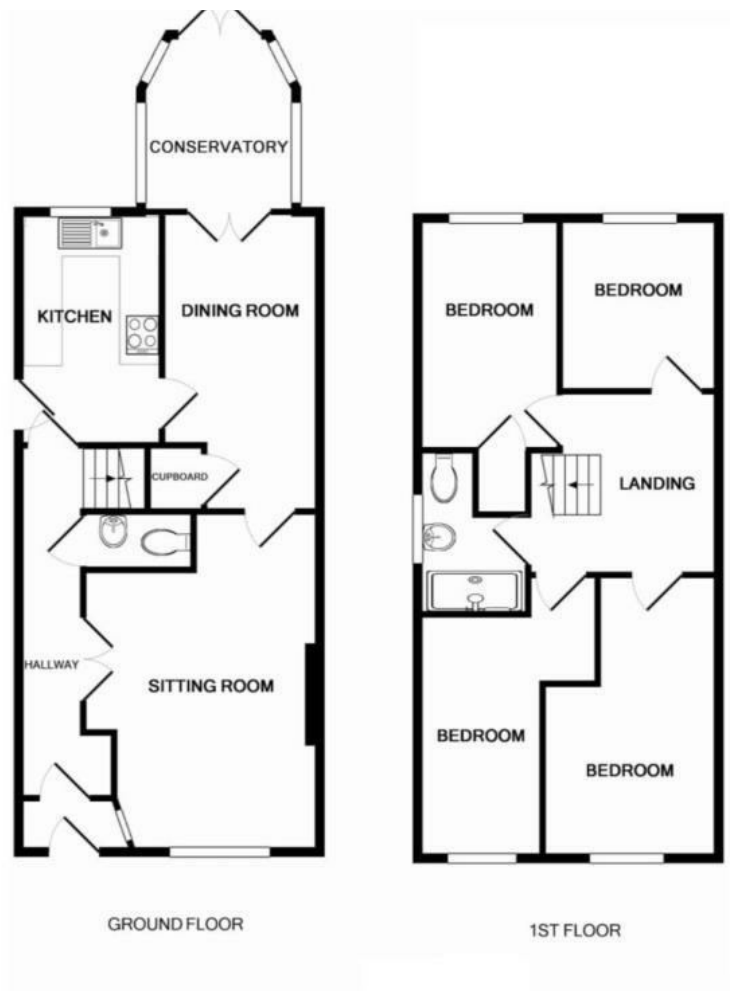
Directions



A four bedroom detached family house situated in Mellis Court at the end of a cul-de-sac. The accommodation comprises, entrance porch, hallway, lounge, dining room and conservatory, cloakroom and kitchen. the first floor offers, master bedroom, three



Floor plans



Energy Efficiency Rating		
	Current	Potential
<i>Very energy efficient - lower running costs</i>		
(92 plus) A		
(81-91) B		
(69-80) C		79
(55-68) D	61	
(39-54) E		
(21-38) F		
(1-20) G		
<i>Not energy efficient - higher running costs</i>		
England & Wales	EU Directive 2002/91/EC	

Council Tax Band D EPC Rating D

NICHOLAS
ESTATES

173 Hamilton Road
Felixstowe
Suffolk
IP11 7DR
01394 282828
felixstowe@yourhome.co.uk
yourhome.co.uk