



Wiltshire Close, SW3

£650,000

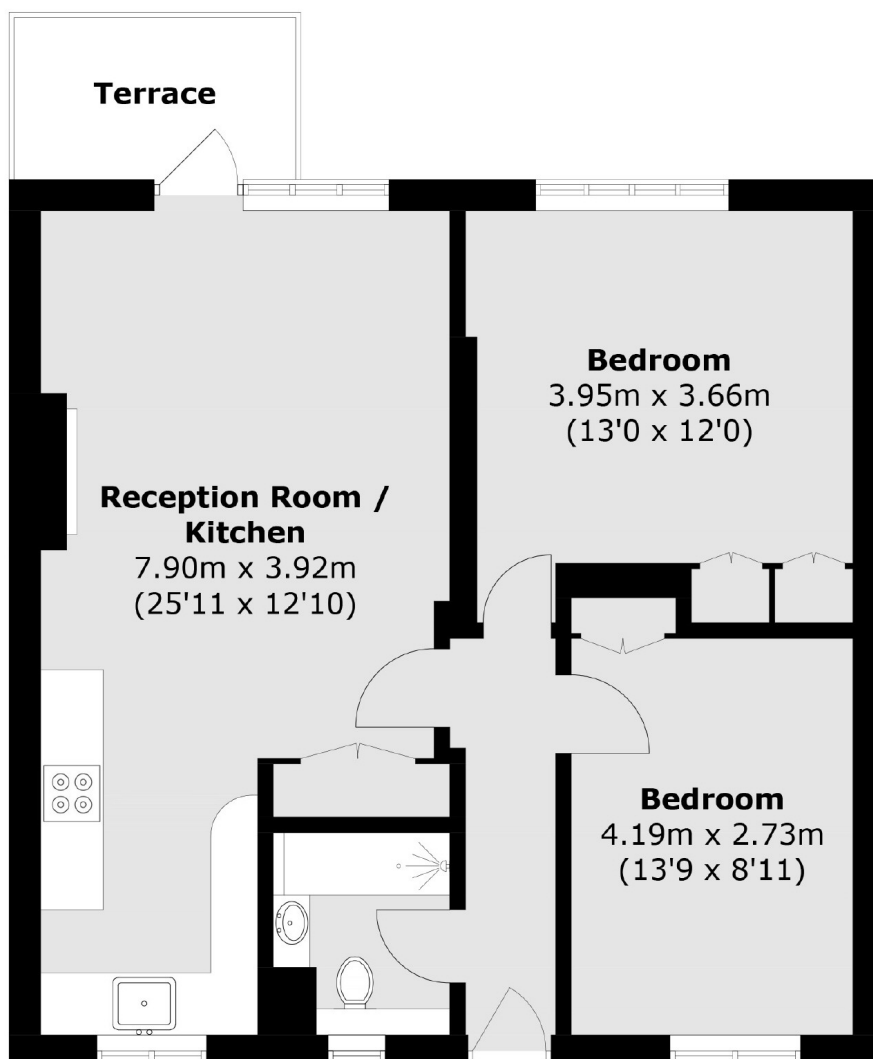
A well presented two bedroom apartment, conveniently located moments from Pavilion Road and the King's Road. Entered on the ground floor, the property benefits from a long lease and a private terrace.

Wiltshire Close is situated between Walton Street and Draycott Place. Sloane Square, Knightsbridge and South Kensington tube stations are all within walking distance.

Features

- Long Leasehold
- Two Double Bedrooms
- Private Terrace
- Great Condition
- Quiet Location
- Low Outgoing Charges

Wiltshire Close, London, SW3



Ground Floor

Total area (approx.): 61.7 sq. m (664.1 sq. ft)

Terrace: 4.2 sq. m (45.2 sq. ft)

Dexters

Chelsea and Belgravia
45 Sloane Avenue
London
SW3 3DH
Sales
020 7590 9510

Energy Rating: . We aim to make our particulars both accurate and reliable. However they are not guaranteed; nor do they form part of an offer or contract. If you require clarification on any points then please contact us, especially if you're traveling some distance to view. Please note that appliances and heating systems have not been tested and therefore no warranties can be given as to their good working order.

 **RICS** | Regulated
Estate Agent
and Letting Agent

dexters.co.uk