



Meadow Walk Broad Lane, South Elmsall Pontefract WF9 2NB



welcome to

Meadow Walk Broad Lane, South Elmsall Pontefract

A brand new three bedroom semi detached home by Gleeson Homes in South Elmsall, featuring an open plan kitchen diner, bright living room with French doors to the garden, Porcelanosa tiled bathroom, and a side driveway-perfect for modern family living.

Agents Notes

Please be aware the images include digital dressing and are for illustration purposes only. Please check with the sales team for specific details, styles & colours.

Entrance Hall

Front entrance door.

Downstairs Wc

Living Room

13' 7" x 10' 10" (4.14m x 3.30m)

Window to the rear and double glazed patio doors to the rear.

Kitchen/Diner

16' 3" x 10' 3" (4.95m x 3.12m)

Your kitchen will include a stainless steel single oven and sink, with drainer board and a mixer tap. There will be space provided for a standard size washing machine with cold feed plumbing and a single power point. Window to the front and side.

Landing

Bedroom One

13' 7" x 8' 3" (4.14m x 2.51m)

Two windows to the front.

Bedroom Two

12' 6" x 7' 2" (3.81m x 2.18m)

With a window to the rear.

Bedroom Three

9' 1" x 6' 1" (2.77m x 1.85m)

With a window to the rear.

Bathroom

Your bathroom will come complete with a white

Ideal Standard bathroom suite, with pillar taps to the bath and washbasin. With a window to the side.

Exterior

All our homes feature a turfed front garden and a private garden to the rear. Some of our homes come with fencing and turfing in the rear garden as standard subject to plot and development. Where this is not included as standard, both are available as optional extras. Driveway to the side.





view this property online williamhbrown.co.uk/Property/PON119701



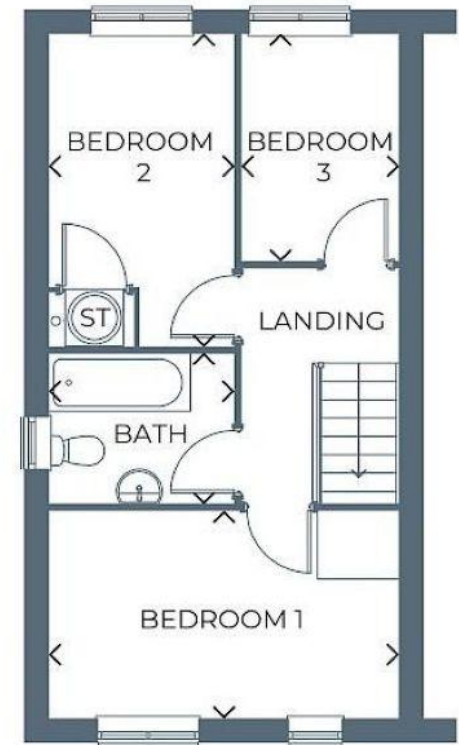
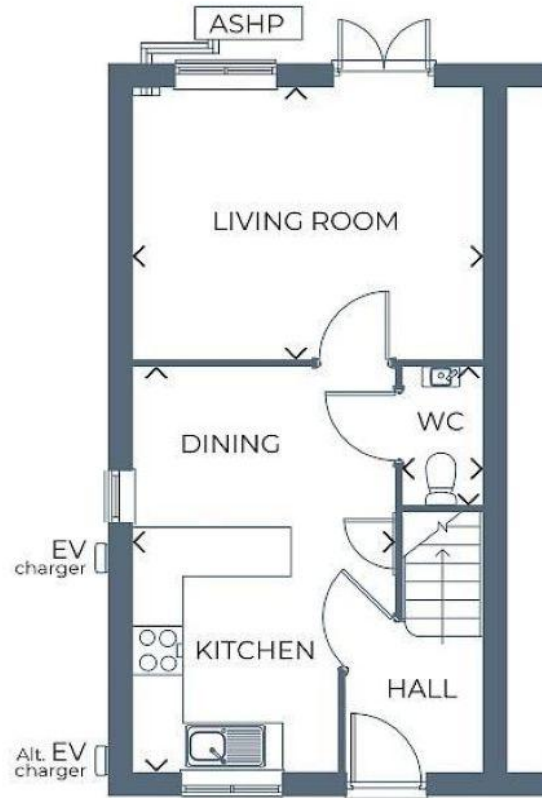
welcome to

Meadow Walk Broad Lane, South Elmsall Pontefract

- Three Bedroom Semi-detached New Home
- Front and rear gardens
- Driveway
- Downstairs WC
- High-quality specifications included as standard from well-known brands

Tenure: Freehold EPC Rating: Exempt

£194,995



*This home may or may not be fitted with an EV charger. Please confirm with your Sales Executive before reservation.

view this property online williamhbrown.co.uk/Property/PON119701



Property Ref:
PON119701 - 0002

1. MONEY LAUNDERING REGULATIONS Intending purchasers will be asked to produce identification documentation at a later stage and we would ask for your co-operation in order that there is no delay in agreeing the sale. 2. These particulars do not constitute part or all of an offer or contract. 3. The measurements indicated are supplied for guidance only and as such must be considered incorrect. Potential buyers are advised to recheck measurements before committing to any expense. 4. We have not tested any apparatus, equipment, fixtures or services and it is in the buyers interest to check the working condition of any appliances. 5. Where an EPC, or a Home Report (Scotland only) is held for this property, it is available for inspection at the branch by appointment. If you require a printed version of a Home Report, you will need to pay a reasonable production charge reflecting printing and other costs. 6. We are not able to offer an opinion either written or verbal on the content of these reports and this must be obtained from your legal representative. 7. Whilst we take care in preparing these reports, a buyer should ensure that his/her legal representative confirms as soon as possible all matters relating to title including the extent and boundaries of the property and other important matters before exchange of contracts.

William H Brown is a trading name of Sequence (UK) Limited which is registered in England and Wales under company number 4268443, Registered Office is Cumbria House, 16-20 Hockliffe Street, Leighton Buzzard, Bedfordshire, LU7 1GN. VAT Registration Number is 500 2481 05.



william h brown



01977 791406



Pontefract@williamhbrown.co.uk



26 Market Place, PONTEFRAC, West Yorkshire,
WF8 1AT



williamhbrown.co.uk