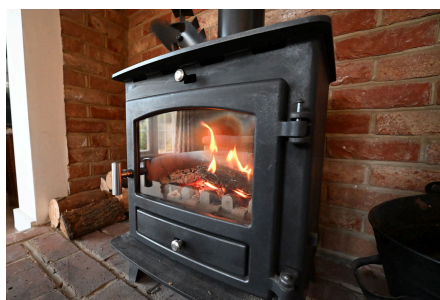


Avery Way, Allhallows, Rochester, ME3 9PX

Guide Price £500,000-£550,000

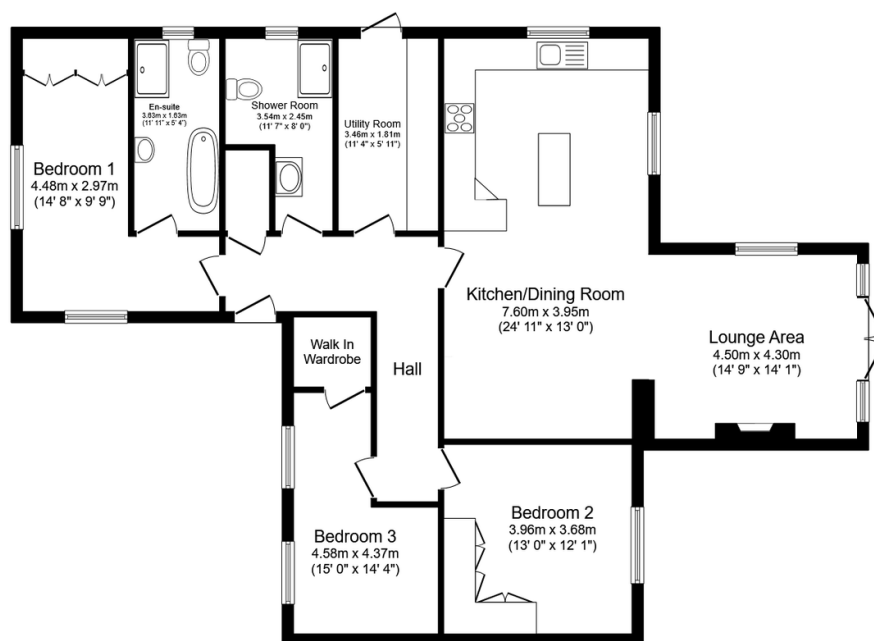
3 2 1



CALL TO BOOK YOUR VIEWING. Guide Price £500,000 - £550,000. Whether you are looking to retire to a bungalow in the countryside or upsize your current family home this property will certainly suit a variety of buyers. You will be impressed from the moment you pull up onto the driveway with the ample parking available and you will not be disappointed when you enter the home. Offering spacious rooms throughout and finished to a beautiful standard this property will certainly be popular. QUOTE AP0490

Key Features

- Three Double Bedroom Extended Bungalow
- Ensuite Bathroom To Master Bedroom
- Open Plan Kitchen Living Space
- Annex Potential
- Tenure Freehold/Council Tax Band D
- Driveway For Several Cars
- Utility Room
- Feature Oak Beam Fireplace
- 200ft Rear Garden
- QUOTE AP0490



Floor Plan

Floor area 115.5 sq.m. (1,243 sq.ft.)

Total floor area: 115.5 sq.m. (1,243 sq.ft.)

This floor plan is for illustrative purposes only. It is not drawn to scale. Any measurements, floor areas (including any total floor area), openings and orientations are approximate. No details are guaranteed, they cannot be relied upon for any purpose and do not form any part of any agreement. No liability is taken for any error, omission or misstatement. A party must rely upon its own inspection(s). Powered by www.Propertybox.io