

Woodlands Street, SE13

£320,000

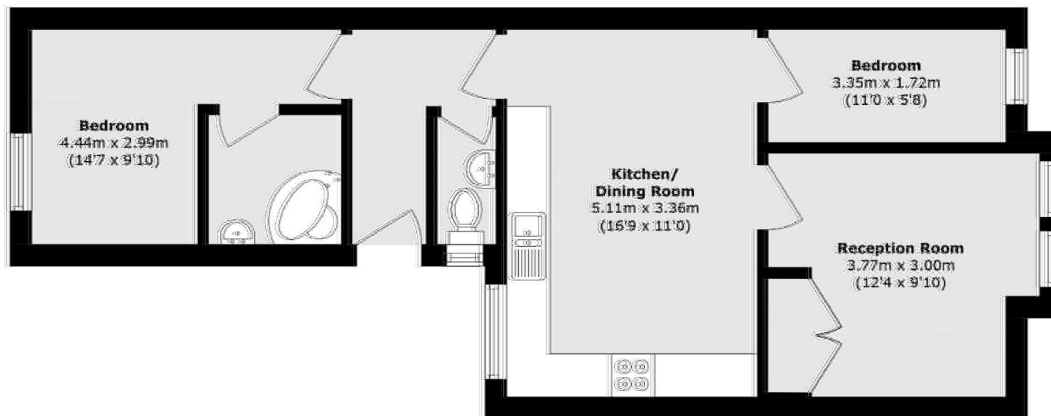
Offered with a share of the freehold and no onward chain, a two bedroom top floor period conversion with two garages. In excess of 600 Sq Ft offering the potential to renovate throughout.

Woodlands Street is a quiet residential road well located for Mountsfield Park and Hither Green station offering frequent services into London and the City.

Features

- Two Bedroom
- Modernisation Potential
- Edwardian Conversion Flat
- Double Garage
- Freehold Share
- Chain Free

Woodlands Street, London, SE13



Total area (approx.): 56.0 sq. m (602.7 sq. ft)