



## 84 George Street

Ashford, TN23 7AG

Price £240,000

An impressive modern apartment, ideally located for access to Ashford town centre and mainline station.

The contemporary accommodation comprises a large open plan kitchen and living space with doors on to the balcony, two double bedrooms, en suite and family bathroom.

Offered for sale with no onward chain.

The inviting communal entrance provides the ideal space to receive visitors and leads on to the inner hallway with convenient lift to all floors.

LEASEHOLD - 243 Years Remaining

Ground Rent: £250 per annum

Management Charge: Circa £2,000 per annum tbc.

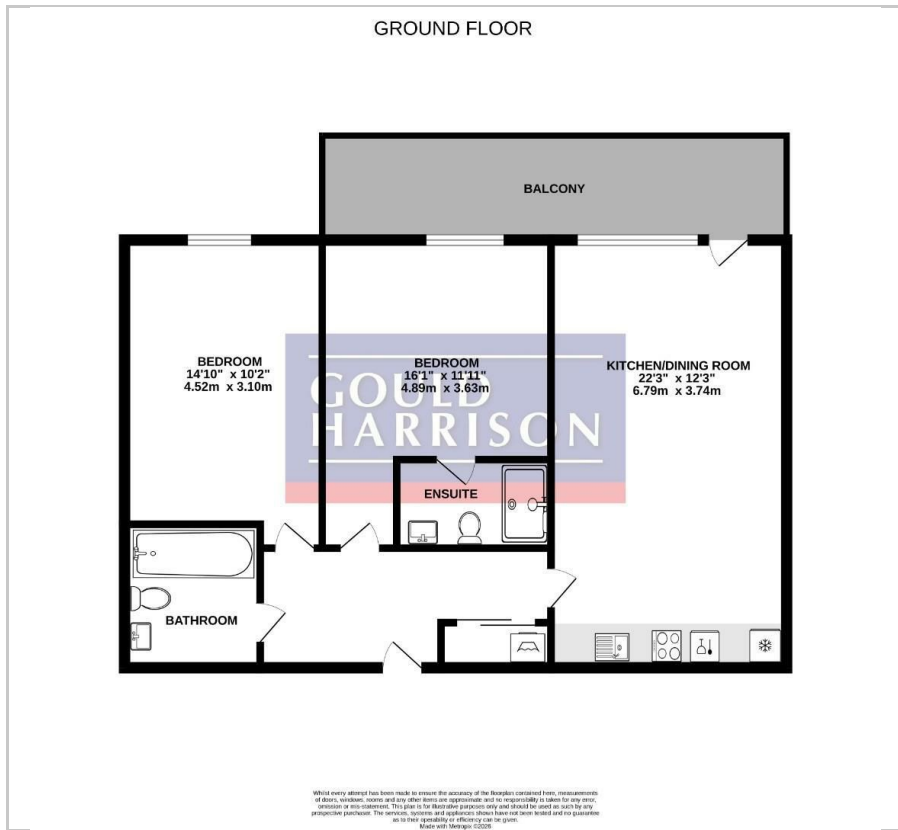
### Viewing

Please contact our Ashford Office on 01233 646411 if you wish to arrange a viewing appointment for this property or require further information.

- CONTEMPORARY APARTMENT
- SECOND FLOOR
- TWO DOUBLE BEDROOMS
- EN SUITE & FAMILY BATHROOM
- OPEN PLAN KITCHEN/LIVING SPACE
- CENTRAL LOCATION MINUTES FROM MAINLINE STATION
- LEASEHOLD - 243 YEARS REMAINING
- NO ONWARD CHAIN



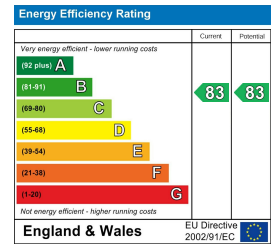
# Floor Plan



# Area Map



# Energy Efficiency Graph



These particulars, whilst believed to be accurate are set out as a general outline only for guidance and do not constitute any part of an offer or contract. Intending purchasers should not rely on them as statements of representation of fact, but must satisfy themselves by inspection or otherwise as to their accuracy. No person in this firm's employment has the authority to make or give any representation or warranty in respect of the property.