



Chesilton Road, SW6

£1,361 Per week

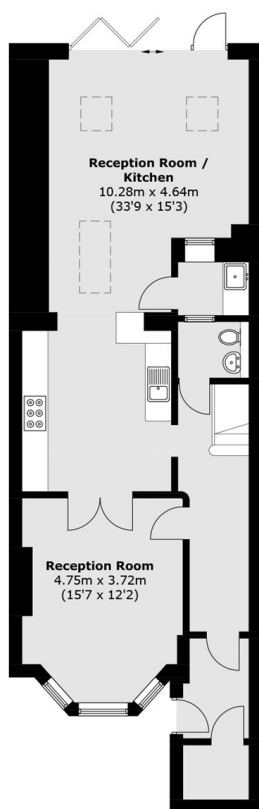
This four bedroom townhouse in Parsons Green presents beautifully as a perfect family home. The property features a double reception space, open plan kitchen dining area, four large double bedrooms and four bathrooms.

Chesilton Road is one of Fulham's most sought after streets being just moments from the coffee shops, restaurants, pubs and shops of the Fulham Road and Parsons Green. The closest underground station is Parsons Green (District Line).

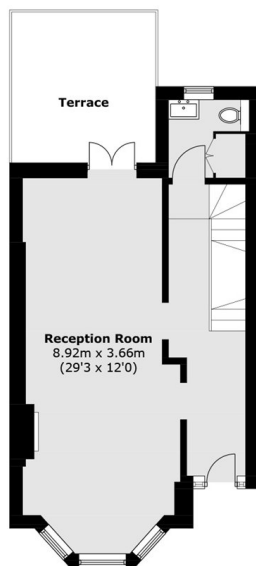
Features

- Parsons Green
- Double Reception Room
- Garden and Terrace
- Wooden Flooring
- Utility Room
- Ample Storage

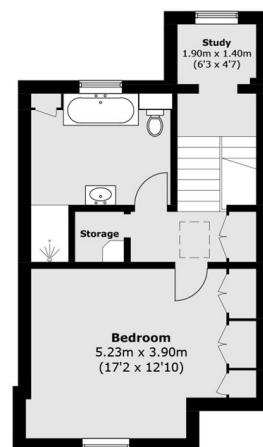
Chesilton Road, London, SW6



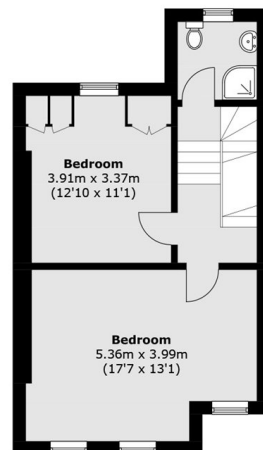
Basement



Ground Floor



Second Floor



First Floor

Total area (approx.): 210.4 sq. m (2,264.6 sq. ft)
(Including Basement)
Terrace: 11.7 sq. m (125.9 sq. ft)