



Wenlock Road, London, N1 7GT

£780 Per Week

2 double bedroom 2 bathroom apartment for rent on the 8th floor of this very sought after development 'THE CUBE APARTMENTS' N1, located just off City Road and situated between the Regents Canal and Shepherdess Walk.

Open plan living room with luxury fitted kitchen, access to terrace, 2 double bedrooms, 2 luxury bathroom suites and solid wood heated flooring.

Old Street tube station, cafes, host of local shops and main supermarkets are a short walk away.

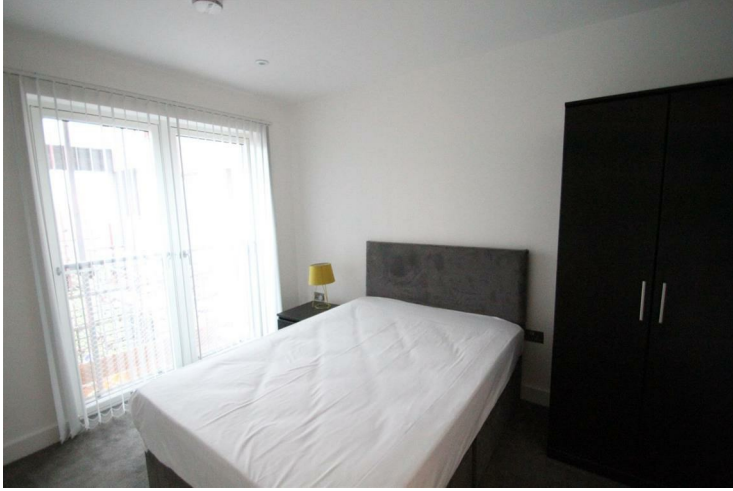
Day concierge, comes furnished.

PROPERTY AVAILABLE FROM 27.07.2026

Marketing of On-Site Amenities and Agent Indemnity.

- 2 Double bedrooms
- Very High Specification
- Minutes from Old Street station
- 8th floor apartment
- Available From 27.07.2026
- Between canal & park
- Furnished
- 2 bathrooms
- Terrace

Wenlock Road, London, N1 7GT



BEDROOM



KITCHEN



BATHROOM



BEDROOM



RECEPTION ROOM

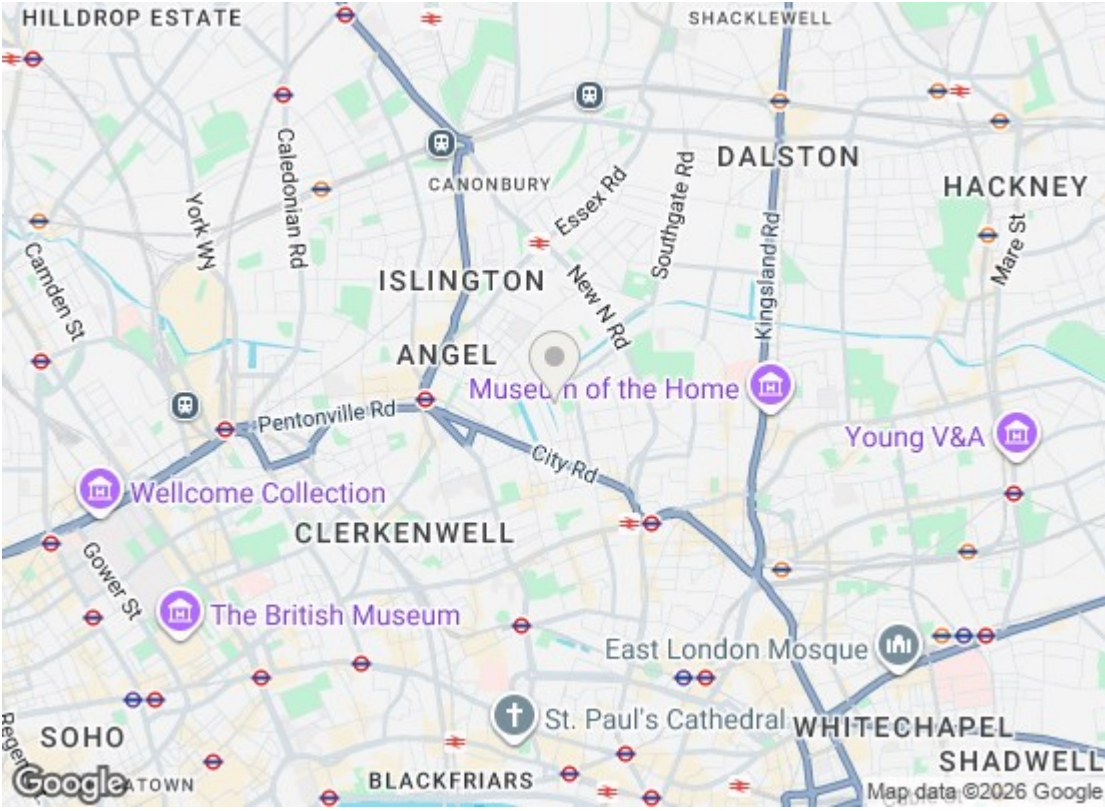


EN SUITE SHOWER ROOM

Wenlock Road, London, N1 7GT



RECEPTION ROOM



Energy Efficiency Rating

	Current	Potential
<i>Very energy efficient - lower running costs</i>		
(92 plus) A		
(81-91) B		
(69-80) C	79	79
(55-68) D		
(39-54) E		
(21-38) F		
(1-20) G		
<i>Not energy efficient - higher running costs</i>		

England & Wales EU Directive 2002/91/EC

Environmental Impact (CO₂) Rating

	Current	Potential
<i>Very environmentally friendly - lower CO₂ emissions</i>		
(92 plus) A		
(81-91) B		
(69-80) C		
(55-68) D		
(39-54) E		
(21-38) F		
(1-20) G		
<i>Not environmentally friendly - higher CO₂ emissions</i>		

England & Wales EU Directive 2002/91/EC

We have prepared these property particulars as a general guide to a broad description of the property. They are not intended to constitute part of an offer or contract. We have not carried out a structural survey and the services, appliances and specific fittings have not been tested. All photographs, measurements, floorplans and distances referred to are given as a guide only and should not be relied upon for the purchase of carpets or any other fixtures or fittings. Lease details, service charges and ground rent (where applicable) and council tax are given as a guide only and should be checked and confirmed by your Solicitor prior to exchange of contracts.