



WHERE STANDARDS MATTER

Spencer Munson
128 High Road
Loughton IG10 4BE

Tel: 020 8502 2222

loughton@spencermunson.co.uk
Website: spencermunson.co.uk



Monroe House, Church Hill, Loughton, IG10

Spencer Munson are please to offer you this modern Two double bedroom, Two bathroom apartment.

This second-floor apartment, with a contemporary style, boasts a spacious reception room, perfect for entertaining, leading out to a private balcony. The open-plan kitchen is fully equipped. The master bedroom features an en-suite bathroom, with an additional family bathroom for convenience.

Conveniently located close to Loughton High Street, residents can enjoy easy access to a variety of shops and amenities.

The property also benefits from secure parking behind electric gates for one car. A prime location near Loughton Central Line tube station (Zone 5), commuting to central London is a breeze.

Don't miss out on this fantastic opportunity to rent this stylish and well-appointed apartment in a sought-after location. Contact us today to arrange a viewing. EPC B. Council Tax E Available 6th June 2026

Rent: £1,950 - Monthly



Monroe House, Church Hill, Loughton, IG10

Reception 1

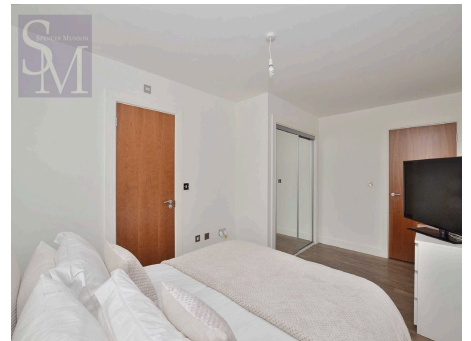


Kitchen



Conservatory

Bedroom 1

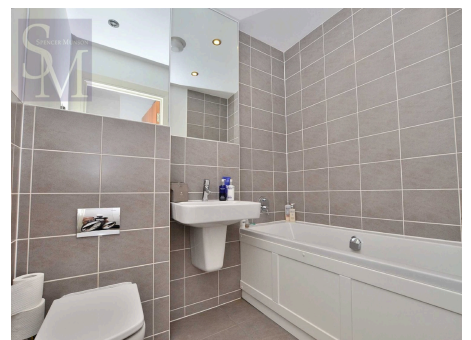


En-Suite



Bedroom 2

Bathroom



Balcony



Parking

Double Glazing

Energy Efficiency Rating		
	Current	Potential
Very energy efficient - lower running costs		
92-100 A		
81-91 B	83	83
69-80 C		
55-68 D		
39-54 E		
21-38 F		
1-20 G		
Not energy efficient - higher running costs		
England & Wales	EU Directive 2002/91/EC	

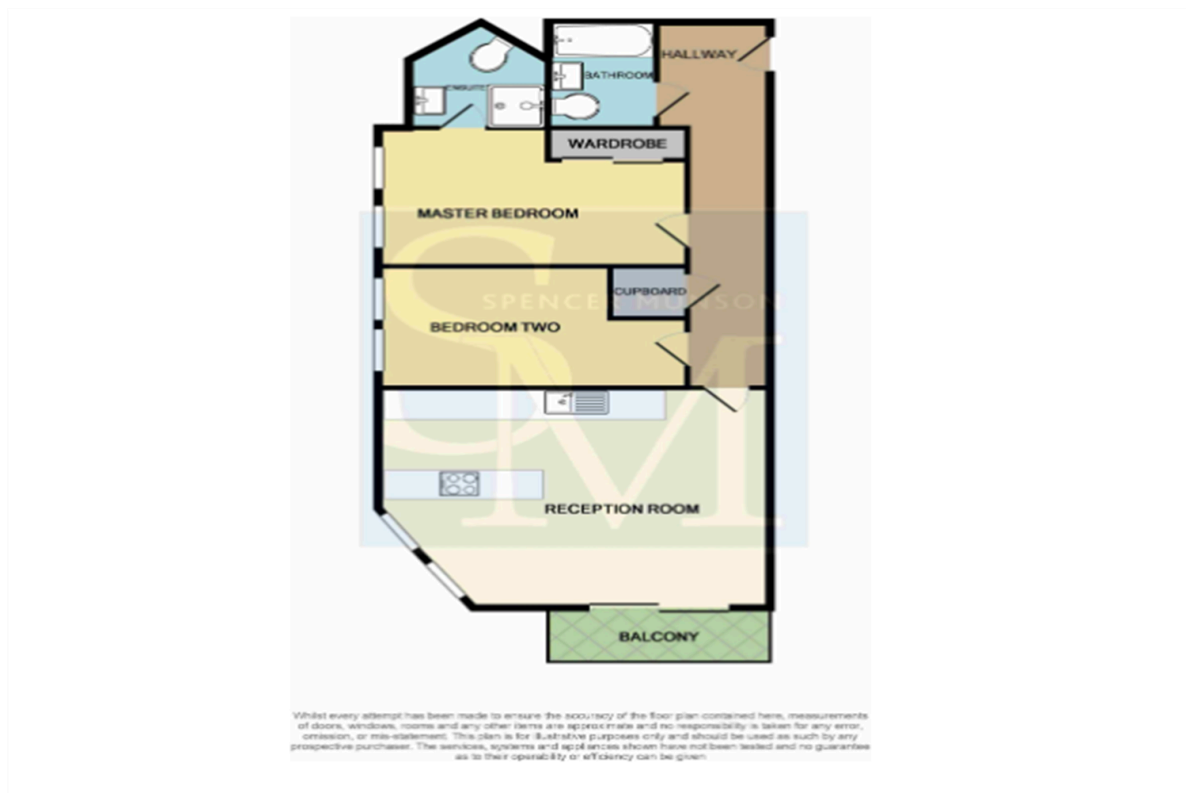
Spencer Munson are please to offer you this modern Two double bedroom, Two bathroom apartment. This second-floor apartment, with a contemporary style, boasts a spacious reception room, perfect for entertaining, leading out to a private balcony. The open-plan kitchen is fully equipped. The master bedroom features an en-suite bathroom, with an additional family bathroom for convenience.

Conveniently located close to Loughton High Street, residents can enjoy easy access to a variety of shops and amenities.

The property also benefits from secure parking behind electric gates for one car. A prime location near Loughton Central Line tube station (Zone 5), commuting to central London is a breeze.

Don't miss out on this fantastic opportunity to rent this stylish and well-appointed apartment in a sought-after location. Contact us today to arrange a viewing. EPC B. Council Tax E Available 6th June 2026

Monroe House, Church Hill, Loughton, IG10



Disclaimer

These particulars are intended to give a fair and substantially correct overall description for the guidance of intending tenants/purchasers and do not constitute an offer or part of a contract. Prospective tenants/purchasers and/or lessees should seek their own professional advice. All descriptions, dimensions, reference to condition, fixtures, fittings and necessary permissions for use and occupation and other details are given in good faith and are believed to be correct. However, intending tenants/purchasers should not rely on them as statements or representations of fact, but must satisfy themselves by inspection or otherwise as to the correctness of each of them. Fixtures and fittings shown in pictures and on viewings may well not be included in any tenancy/sale and any prospective tenant/purchaser must clarify this for themselves. All measurements and floorplans are approximate and produced as a guide in good faith. Please note that some of the furniture and decor items shown in these images have been digitally added using AI technology for illustrative purposes. The actual property may differ in appearance. Prospective buyers or renters are encouraged to visit the property in person to get an accurate representation.