



32 Seaton Drive, Ashford, TW15 3ET

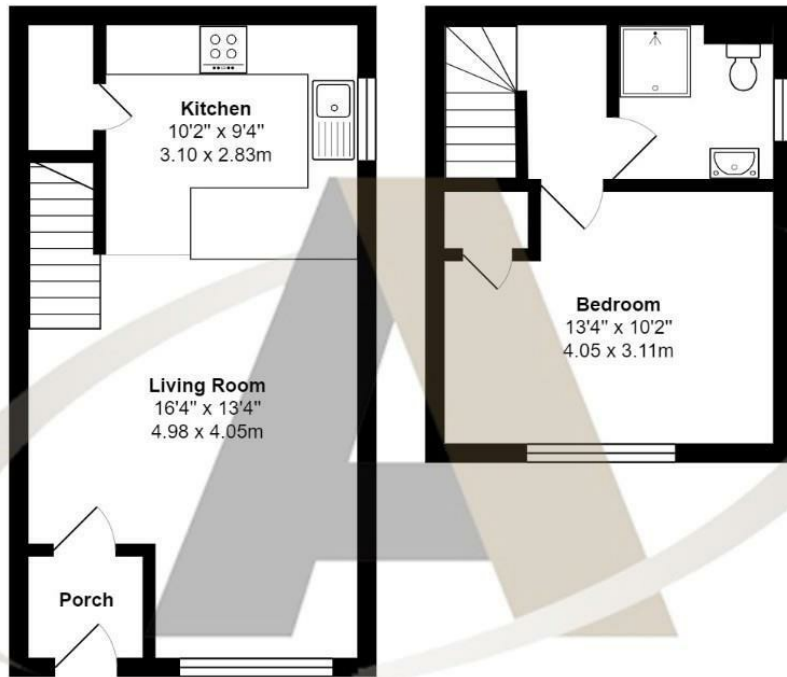
£1,400 Per Month

## 32 Seaton Drive, Ashford, TW15 3ET

Aspen Estate Agents are delighted to introduce this one-bedroom house in Seaton Drive, Ashford. Accommodation comprises a large reception room which is open plan to the modern kitchen. Upstairs this property has a shower room and a double bedroom with a built-in cupboard and plenty of space for additional storage. Outside this property has its very own garden and an allocated parking space. Prompt viewings are encouraged and can be booked by calling Aspen Estate Agents.



# Floor Plan



## Seaton Drive, Ashford

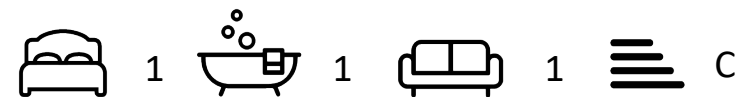
Total Area: 566 ft<sup>2</sup> ... 52.6 m<sup>2</sup>

All measurements are approximate and for display purposes only



### Features

- One Bedroom House
- Own Private Garden
- Modern Kitchen
- Available August 2026
- Allocated Parking
- Fully Tiled Showerroom



Tenure - Council Tax Band - C

