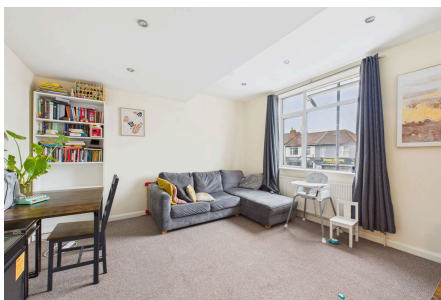


## Filton Avenue, Horfield, Bristol, BS7 0BE

£200,000

2 1 1

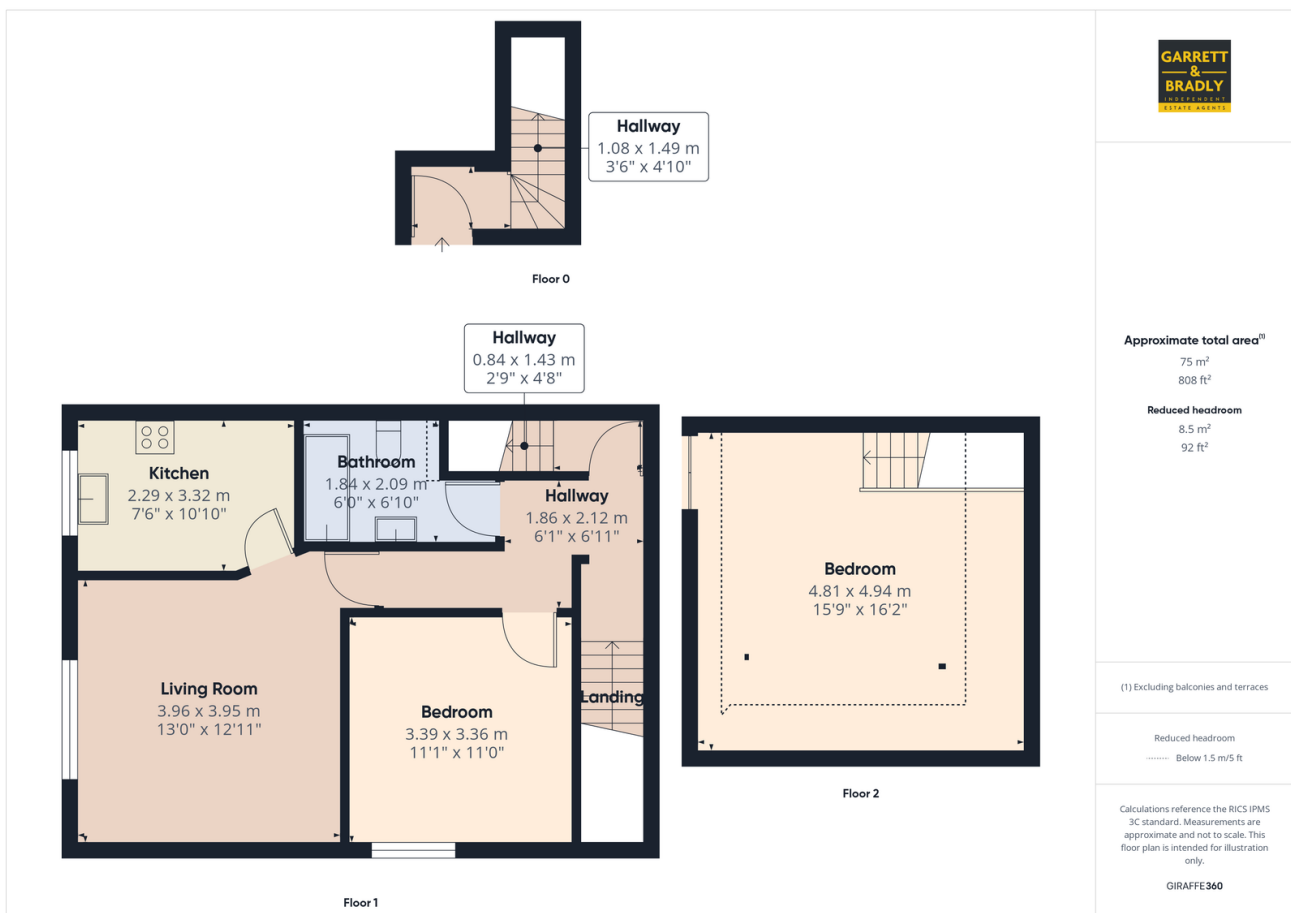


Offered to the market with no onward chain this spacious two double bedroom first-floor apartment is arranged over two levels, providing flexible and well-proportioned living space ideal for first-time buyers, investors, or those seeking a low-maintenance home in a sought-after Bristol location. The accommodation comprises a generous lounge with ample space for both living and dining areas, a modern fitted kitchen with contemporary units and worktops, two well-sized double bedrooms, and a stylish family bathroom. The split-level layout adds character and separation between living and sleeping areas, making the property feel more like a house than a typical flat.

145-147 East Street, Bedminster, Bristol, BS3 4EJ

## Key Features

- No Onward Chain
- Private Entrance
- Lounge Diner
- Modern Bathroom
- Close To Local Amenities
- Maisonette Apartment
- Two Spacious Double Bedrooms
- Modern Kitchen
- Arranged Over Two Floors
- Close To Public Transport Links



145-147 East Street, Bedminster, Bristol, BS3 4EJ