



## Reynard Crag Caravan Park, Willow Lodge

£125,000 Guide Price



**YOUR AWARD  
WINNING AGENT**

**#DARINGTOBEDIFFERENT**



A beautifully presented two-bedroom detached park house set in a secluded position on the prestigious five-star Gold Award-winning Reynard Crag Park, offering breathtaking open AONB countryside views and combines luxury, comfort, and tranquillity in an exceptional setting.

Located on the family-run Reynard Crag Park, this luxury five-star development is open 10 months of the year (from 1st March to 15th January) and is renowned for its peaceful atmosphere, impeccably maintained surroundings, and high standards. All homes are carefully positioned to take full advantage of the beautiful scenery.

Nestled in the tranquil surroundings of the Nidderdale Way, near Harrogate, the park extends over approximately 14 acres and offers direct access to superb walks, bird watching, cycling, and fishing in the well-stocked lake set within its "secret enchanted garden."

**OUTSIDE** Outside, the property benefits from glass-balustrade decking, providing a stunning elevated viewpoint for enjoying the panoramic countryside views. There is also a secluded patio seating area as well as a private parking space directly to the side of the lodge.

**AGENTS NOTES** Includes a full 25 year licence agreement

Council Tax band: TBD

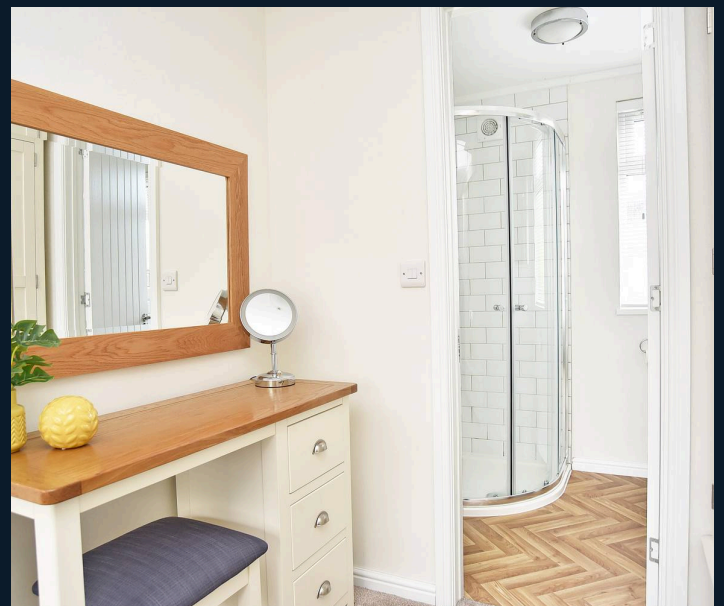
Tenure: Leasehold

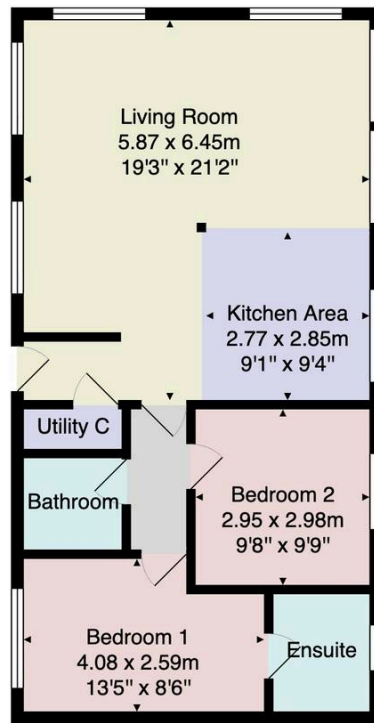


Nearby villages including Birstwith, Hampsthwaite, and Darley provide convenient local amenities, completing this idyllic and sought-after location.

**ACCOMMODATION** The Barley Lodge (40' x 20') is built to residents specification and features a spacious accommodation comprising an impressive open-plan living area filled with natural light from large windows that frame the far-reaching Nidderdale landscape. The modern fitted kitchen comes complete with a range of integrated appliances, seamlessly flowing into the dining area and comfortable sitting area, making it perfect for both entertaining and relaxing.

There are two generously sized bedrooms, including a master suite with en-suite shower room, alongside a stylish house bathroom. The lodge is equipped with central heating and double glazing, ensuring comfort throughout the year.





Total Area: 68.9 m<sup>2</sup> ... 742 ft<sup>2</sup>

All measurements are approximate and for display purposes only.

No liability is accepted by either the agency or Box Property Solutions Ltd as to the exact measurements of the rooms.  
Box Property Solutions Ltd retains the copyright on this plan and allows agents to use it with agreed permission.

