

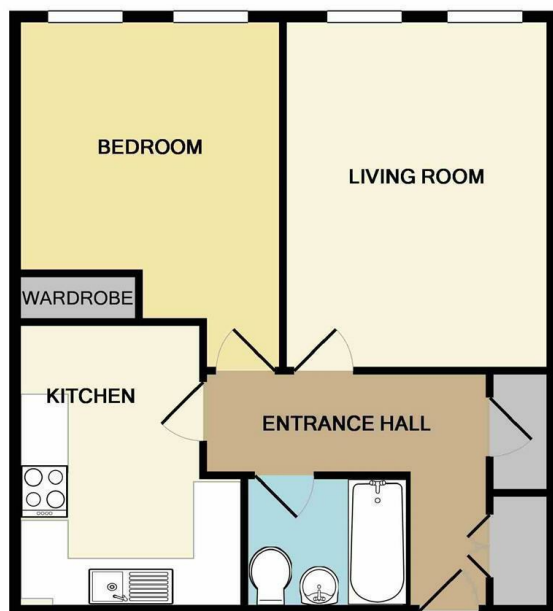


jordan fishwick

APT 29 92 NORTHENDEN ROAD SALE M33 3UR
PCM £995 PCM

APT 29 92 NORTHENDEN ROAD SALE M33 3UR

****AVAILABLE JUNE ** * FIRST FLOOR STUNNING APARTMENT *FULLY FURNISHED* WITH PARKING * A great opportunity to acquire a spacious one double bedroom modern first floor apartment, situated within a popular development, constructed by Linden Homes. After entering through the security key pad coded communal door you can take the lift or stairs to the property. The accommodation comprises of private entrance hall with video intercom system, double door storage cupboard, additional cupboard homing combi-boiler, spacious bright lounge, generous double bedroom with fitted wardrobe, fully fitted kitchen with gas hob and a family bathroom. The property has gas fired central heating and UPVC double glazing throughout. Externally there are well maintained and tended gardens with private parking for both guests and residents. A highly sought after block. Council Tax Band C. call now to arrange a viewing 01619299797**



TOTAL APPROX. FLOOR AREA 560 SQ.FT. (52.1 SQ.M.)
Measurements are approximate. Not to scale. Illustrative purposes only
Made with Metropix ©2019

- APARTMENT
- ONE BEDROOM
- FURNISHED
- OFF ROAD PARKING
- COUNCIL TAX BAND C
- EPC RATING - B



Energy Efficiency Rating															
Current	Potential														
Very energy efficient - lower running costs															
<table border="1"> <tr><td>(92 plus)</td><td>A</td></tr> <tr><td>(81-91)</td><td>B</td></tr> <tr><td>(69-80)</td><td>C</td></tr> <tr><td>(55-68)</td><td>D</td></tr> <tr><td>(39-54)</td><td>E</td></tr> <tr><td>(21-38)</td><td>F</td></tr> <tr><td>(1-20)</td><td>G</td></tr> </table>		(92 plus)	A	(81-91)	B	(69-80)	C	(55-68)	D	(39-54)	E	(21-38)	F	(1-20)	G
(92 plus)	A														
(81-91)	B														
(69-80)	C														
(55-68)	D														
(39-54)	E														
(21-38)	F														
(1-20)	G														
81	81														
Not energy efficient - higher running costs															
<table border="1"> <tr><td>(92 plus)</td><td>A</td></tr> <tr><td>(81-91)</td><td>B</td></tr> <tr><td>(69-80)</td><td>C</td></tr> <tr><td>(55-68)</td><td>D</td></tr> <tr><td>(39-54)</td><td>E</td></tr> <tr><td>(21-38)</td><td>F</td></tr> <tr><td>(1-20)</td><td>G</td></tr> </table>		(92 plus)	A	(81-91)	B	(69-80)	C	(55-68)	D	(39-54)	E	(21-38)	F	(1-20)	G
(92 plus)	A														
(81-91)	B														
(69-80)	C														
(55-68)	D														
(39-54)	E														
(21-38)	F														
(1-20)	G														
England & Wales															
EU Directive 2002/91/EC															

Environmental Impact (CO ₂) Rating															
Current	Potential														
Very environmentally friendly - lower CO ₂ emissions															
<table border="1"> <tr><td>(92 plus)</td><td>A</td></tr> <tr><td>(81-91)</td><td>B</td></tr> <tr><td>(69-80)</td><td>C</td></tr> <tr><td>(55-68)</td><td>D</td></tr> <tr><td>(39-54)</td><td>E</td></tr> <tr><td>(21-38)</td><td>F</td></tr> <tr><td>(1-20)</td><td>G</td></tr> </table>		(92 plus)	A	(81-91)	B	(69-80)	C	(55-68)	D	(39-54)	E	(21-38)	F	(1-20)	G
(92 plus)	A														
(81-91)	B														
(69-80)	C														
(55-68)	D														
(39-54)	E														
(21-38)	F														
(1-20)	G														
Not environmentally friendly - higher CO ₂ emissions															
<table border="1"> <tr><td>(92 plus)</td><td>A</td></tr> <tr><td>(81-91)</td><td>B</td></tr> <tr><td>(69-80)</td><td>C</td></tr> <tr><td>(55-68)</td><td>D</td></tr> <tr><td>(39-54)</td><td>E</td></tr> <tr><td>(21-38)</td><td>F</td></tr> <tr><td>(1-20)</td><td>G</td></tr> </table>		(92 plus)	A	(81-91)	B	(69-80)	C	(55-68)	D	(39-54)	E	(21-38)	F	(1-20)	G
(92 plus)	A														
(81-91)	B														
(69-80)	C														
(55-68)	D														
(39-54)	E														
(21-38)	F														
(1-20)	G														
England & Wales															
EU Directive 2002/91/EC															