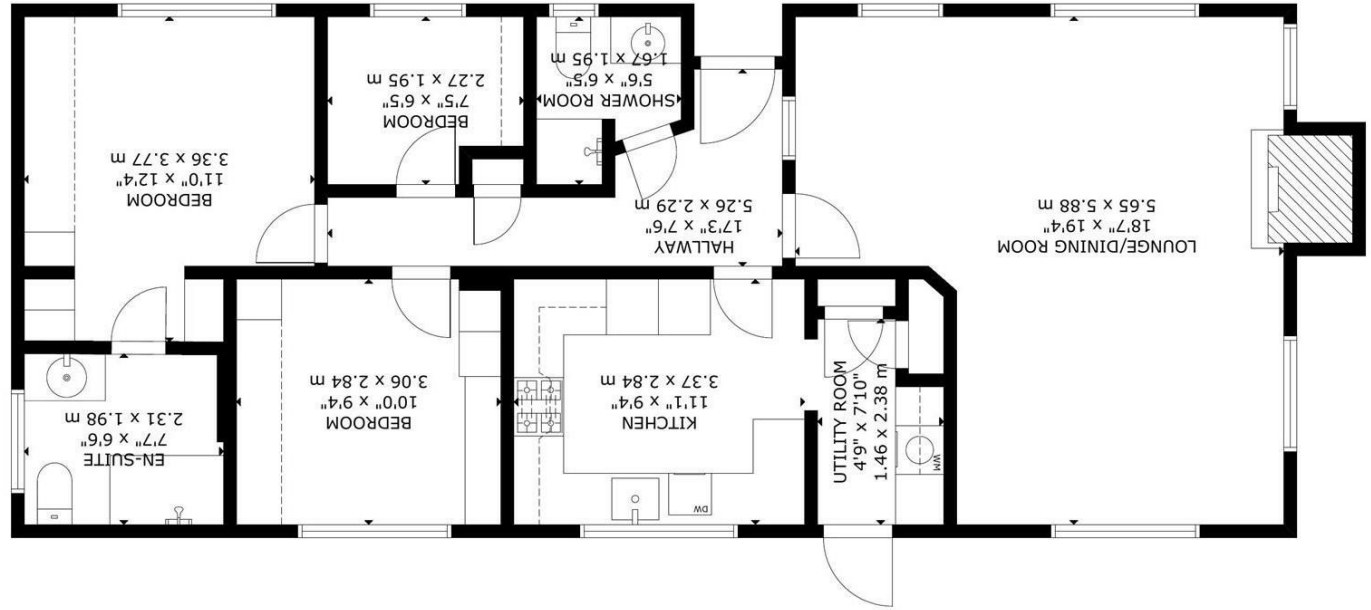


FLOOR 1

GROSS INTERNAL AREA
FLOOR 1: 86 m²/925 sq ft
TOTAL: 86 m²/925 sq ft
SIZE AND DIMENSIONS ARE APPROXIMATE, ACTUAL MAY VARY

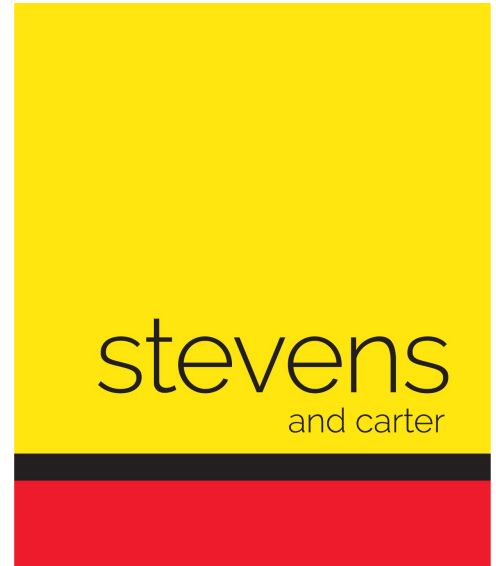


England & Wales	
Energy Efficiency Rating	2022/19 EPC
A	92-100%
B	81-91%
C	69-80%
D	55-68%
E	39-54%
F	13-38%
G	1-12%

Not energy efficient - higher running costs

Very energy efficient - lower running costs

Deanland Wood Park, Hailsham



- 3D Virtual Tour
- Deanland Wood Park For Over 55's
- Spacious L Shape Lounge/Dining Room
- Kitchen & Utility Room
- Two Bedrooms Plus Office
- Ensuite Shower Room/WC
- Off Road Parking & Garage
- Close To On Site Facilities
- Viewing Highly Advised
- Omar Sherringham - 48ft x 20ft - Year 1999 -



Freehold

£220,000

3 BEDROOM

1 RECEPTION

2 BATHROOM

1 GARAGE

Deanland Wood Park, Hailsham

Deanland Wood Park, Hailsham

DESCRIPTION

Park Home | Deanland Wood Park | Retirement | 48Ft x 20FT | Omar Sherringham | Two Bedrooms | Office | Garage | Driveway | L Shape Lounge/Dining Room | Viewing Advised |

Stevens and Carter are pleased to market this well presented Park home situated on the award-winning Deanland Wood Park. This home offers a delightful blend of comfort and convenience. Built in 1999, this well-presented property spans an impressive 48ft x 20ft and features a spacious L-shaped lounge and dining room, perfect for both relaxation and entertaining.

The home boasts three well-appointed bedrooms, including two generous double bedrooms, with the main bedroom benefiting from an ensuite bathroom for added privacy. An additional shower room and WC ensure that guests and family members alike have ample facilities. For those who require a dedicated workspace, an office is also included, making this home ideal for modern living.

The kitchen is complemented by a utility room, providing practicality and ease for daily tasks. Outside, the property offers off-road parking for up to three vehicles, along with a garage, ensuring that you have plenty of space for your vehicles and storage needs.

Living in Deanland Wood Park means you can enjoy a peaceful and picturesque environment, with on-site facilities that enhance the community experience. This property is not just a home; it is a lifestyle choice that offers tranquillity and a sense of belonging.

We highly recommend viewing this exceptional park home to fully appreciate its charm and the wonderful surroundings it offers. Don't miss the opportunity to make this



Deanland Wood Park, Hailsham

Entrance Hall 5.26m x 2.29m (17'3 x 7'6)

Lounge/Dining Room 5.89m x 5.66m (19'4 x 18'7)

Kitchen 3.38m x 2.84m (11'1 x 9'4)

Utility Room 2.39m x 1.45m (7'10 x 4'9)

Bedroom One 3.76m x 3.35m (12'4 x 11'0)

Ensuite 2.29m x 1.98m (7'6 x 6'6)

Bedroom Two 3.05m x 2.84m (10'0 x 9'4)

Bedroom Three 2.26m x 1.96m (7'5 x 6'5)

Shower/WC 1.96m x 1.68m (6'5 x 5'6)

Garage