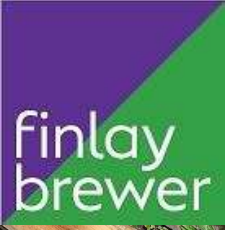


Atwood Road W6



# Atwood Road W6

**3 DOUBLE BEDROOMS**

**DOUBLE RECEPTION**

**KITCHEN / BREAKFAST / DINING ROOM**

**BATHROOM & EN SUITE SHOWER ROOM**

**SOUTH WESTERLY GARDEN**

**GUEST CLOAKROOM**

**EPC RATING: TBC**

**COUNCIL TAX BAND: E**

A wonderful architect-designed 3 double bedroom Victorian terraced cottage, fully refurbished and reimagined by award-winning architects Yard, with excellent living and entertaining space and a pretty south-westerly garden. The generous double reception flows naturally into the full-width, high-ceilinged kitchen/dining room which is flooded with light and features a striking stepped Crittall façade set within a brick and copper reveal. The bespoke Inglis Hall kitchen forms the heart of this exceptional space, while Crittall doors and windows open onto the paved and walled garden. The rear of the house has been remodelled to achieve an impressive floor-to-ceiling height, creating a wonderful sense of volume and light throughout.

On the first floor there are 2 double bedrooms and a family bathroom, whilst the loft space has been converted and extended to create a fantastic third double bedroom with en suite shower room, clever under-eaves built-in joinery and a Juliette balcony. This very impressive and absolutely adorable house of approximately 1,333 sq ft is exceptionally well configured and oozes cool elegance throughout. A must see!

Atwood Road is ideally located for all of Brackenhurst Village's amenities. Additionally, it is within walking distance of the beautiful green spaces of Ravenscourt Park and the River Thames. There are also excellent state and private schools nearby, as well as the transport hubs of Hammersmith and Shepherd's Bush and the retail, restaurant and leisure facilities of Westfield London.

**PRICE GUIDE £1,500,000**

**FREEHOLD**

**SUBJECT TO CONTRACT**



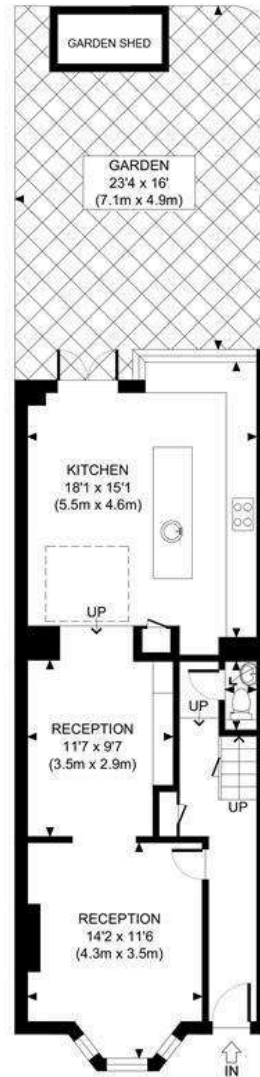




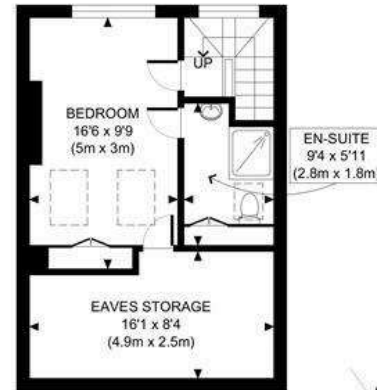




ATWOOD ROAD, W6



GROUND FLOOR  
GROSS INTERNAL  
FLOOR AREA 650 SQ FT



SECOND FLOOR  
GROSS INTERNAL  
FLOOR AREA WITH EAVES 381 SQ FT  
FLOOR AREA WITHOUT EAVES 249 SQ FT



FIRST FLOOR  
GROSS INTERNAL  
FLOOR AREA 434 SQ FT

APPROX. GROSS INTERNAL FLOOR AREA WITH EAVES: 1465 SQ FT/ 136 SQM  
APPROX. GROSS INTERNAL FLOOR AREA WITHOUT EAVES: 1333 SQ FT/ 124 SQM