

4 Salem Terrace, Rhyd-y-Foel, Abergele, LL22 8FG

£179,950

2 1 1

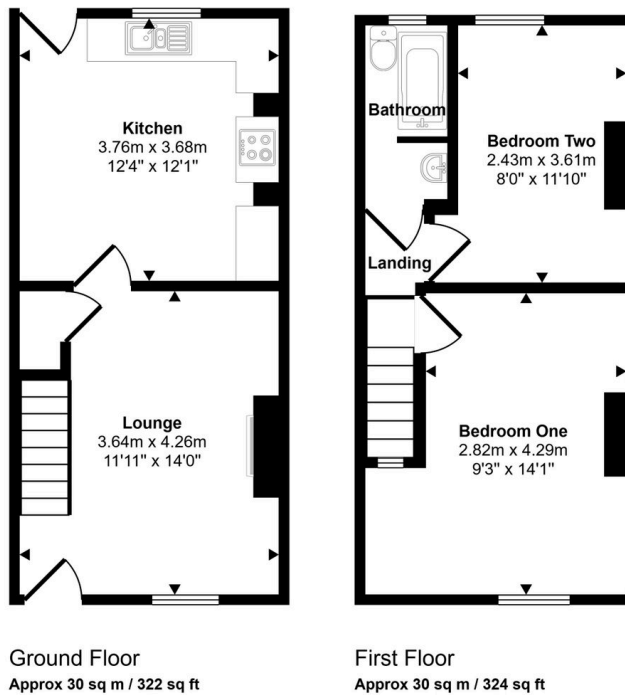


Tucked away in the picturesque village of Rhyd-y-Foel, this charming stone-fronted terrace cottage perfectly blends traditional character with exceptional modern efficiency. Having undergone a thorough and thoughtful renovation, the property boasts solar panels to the front and rear, upgraded insulation, modern electric heating, and double glazing throughout. With the added benefit of no forward chain, a terraced garden, and lovely sea views, it's ready to move straight into. The location offers the best of both worlds, a peaceful village setting close to the local green and community hub, yet just four miles from Abergele town centre and offering effortless commuting via the A55.

## Key Features

- No Forward Chain
- Mid terrace stone cottage
- Coastal views
- Charming terraced garden with shed
- Council tax band - B
- Recently renovated
- Eco friendly living
- Two double bedrooms
- EPC rating - B
- Freehold

Approx Gross Internal Area  
60 sq m / 646 sq ft



This floorplan is only for illustrative purposes and is not to scale. Measurements of rooms, doors, windows, and any items are approximate and no responsibility is taken for any error, omission or mis-statement. Icons of items such as bathroom suites are representations only and may not look like the real items. Made with Made Snappy 360.