



3 Walworth Square

, London SE17 1GA

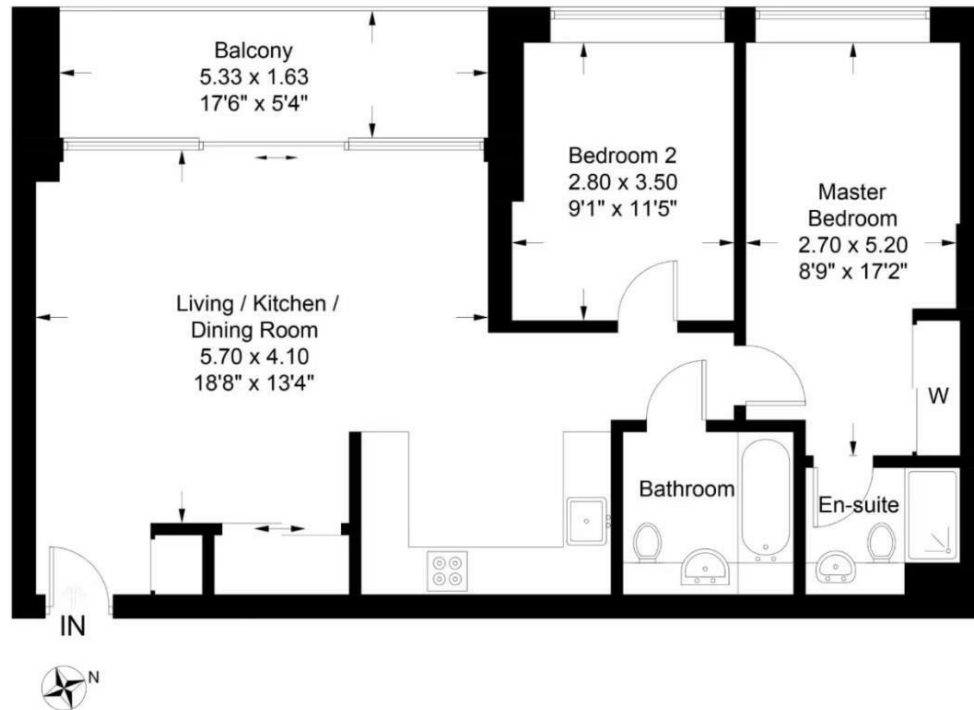
- 2 Bedroom 2 Bathroom
- Bright open-plan kitchen and dining area
 - Communal Gardens
- Near Elephant & Castle Station
 - CTB-E
- Floor-to-ceiling windows
 - Gym
- 24-Hour Concierge
 - EPC-B

£3,450 Per Month

Local Authority **Southwark**
Council Tax Band **E**
EPC Rating **B**

Tarling House, West Grove, Elephant Park, SE17

Approximate Gross Internal Area = 67 sq m / 721 sq ft



London Office Office

Spaces Victoria, 25 Wilton Road, Pimlico,
London, SW1V 1LW

Contact

020 3084 3094
XL@londonvictoriagroups.co.uk
www.londonvictoriagroups.co.uk

Agents Note: Whilst every care has been taken to prepare these particulars, they are for guidance purposes only. All measurements are approximate and for general guidance purposes only and whilst every care has been taken to ensure accuracy, they should not be relied upon and potential buyers/tenants are advised to recheck the measurements.

