



## Rowland Road, N17

### £450,000

This spacious fourth floor flat features two generously sized bedrooms, including a principal bedroom with an en suite, as well as a newly refurbished W/C. The open-plan kitchen and reception area creates an inviting living space, further enhanced by a private south-facing balcony offering outstanding views across London.

Located only a moments walk away from the high street plus having local shops and the shopping centre close by. You can take advantage of near by transports links such as Wood Green Station( Piccadilly Line) and being within reach of the Overground station at White Hart Lane.

### Features

- Double Glazing
- Allocated Parking
- Private Balcony
- Lift Access
- Private Gated Development
- Transport Links

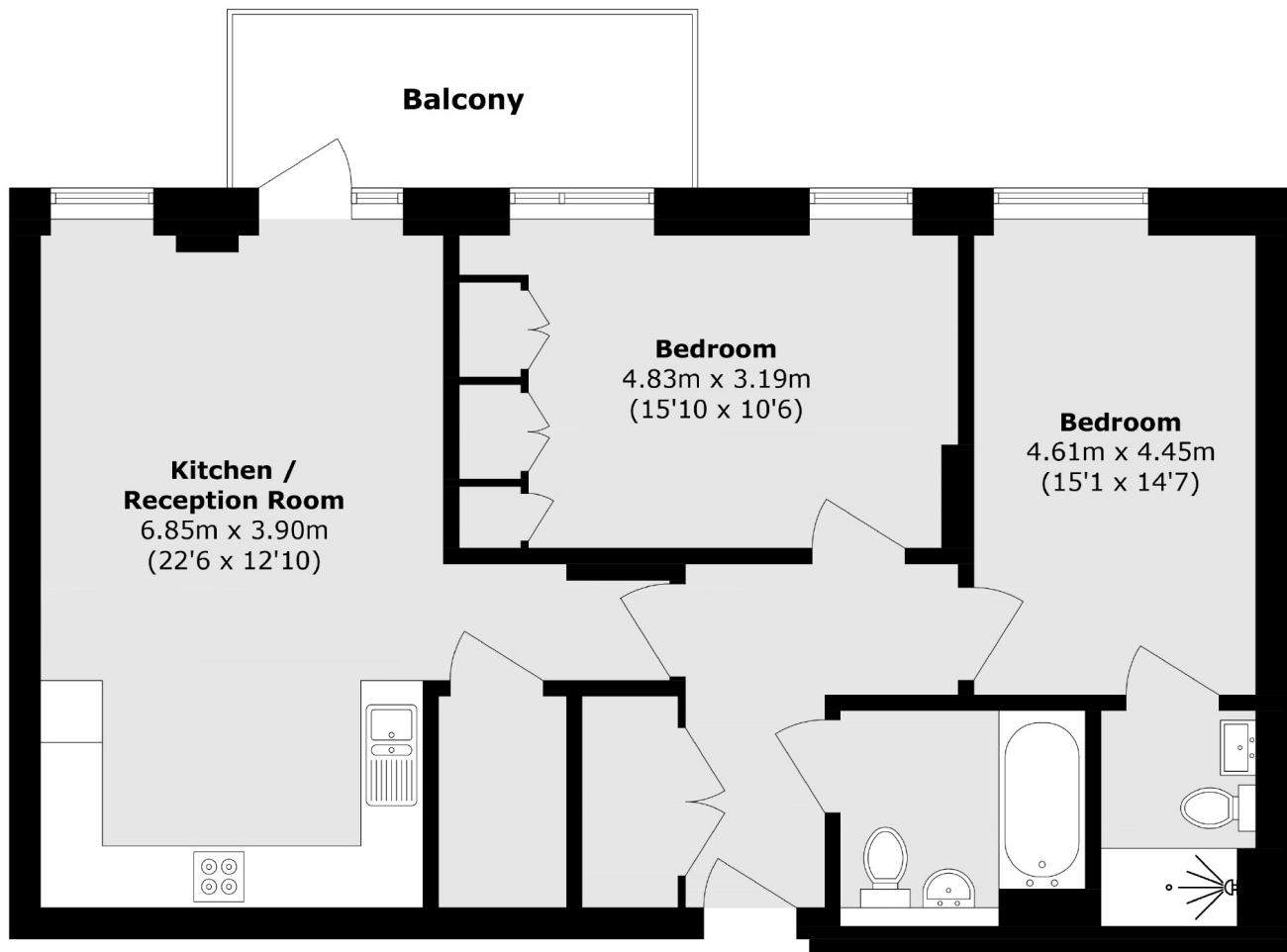


Rowland Road, N17





Rowland Road,  
London, N17



Total area (approx.): 79.1 sq. m (851.4 sq. ft)

Balcony area (approx.): 7.4 sq. m (79.6 sq. ft)

**Dexters**

Muswell Hill  
418 Muswell Hill Broadway  
London  
N10 1DJ  
Sales  
020 8444 2388

Energy Rating: B. We aim to make our particulars both accurate and reliable. However they are not guaranteed; nor do they form part of an offer or contract. If you require clarification on any points then please contact us, especially if you're traveling some distance to view. Please note that appliances and heating systems have not been tested and therefore no warranties can be given as to their good working order.

 **RICS** | Regulated  
Estate Agent  
and Letting Agent

[dexters.co.uk](http://dexters.co.uk)