



## Timbrell Place, SE16

**£2,149** Per calendar month

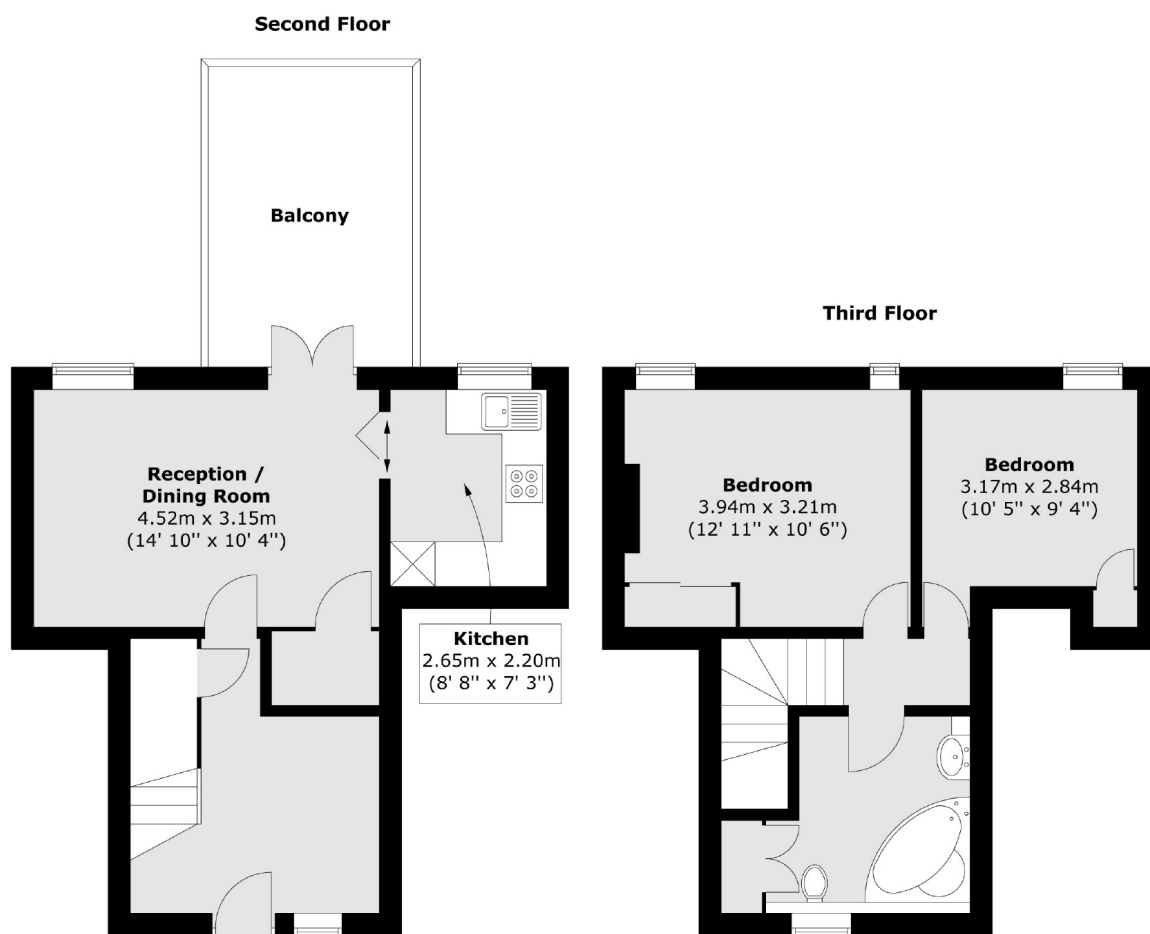
A two double bedroom split level property located in a gated development. This well-presented apartment boasts a semi-open plan kitchen/living area private balcony and ample storage.

Timbrell Place is located moments from the river and offers excellent transport links with the Docklands Ferry to Canary Wharf as well as Canada Water station and Rotherhithe station only a mile away.

### Features

- Two Double Bedrooms
- Split Level
- Separate Kitchen
- Private Terrace
- Canada Water
- Top Floor

# Timbrell Place, London, SE16



Total area (approx.) : 68.2 sq. m (734 sq. ft)  
Total balcony area (approx.) : 11.1 sq. m (119 sq. ft)