

FLETCHERS

ESTATE AGENTS



Coombe Road, W4

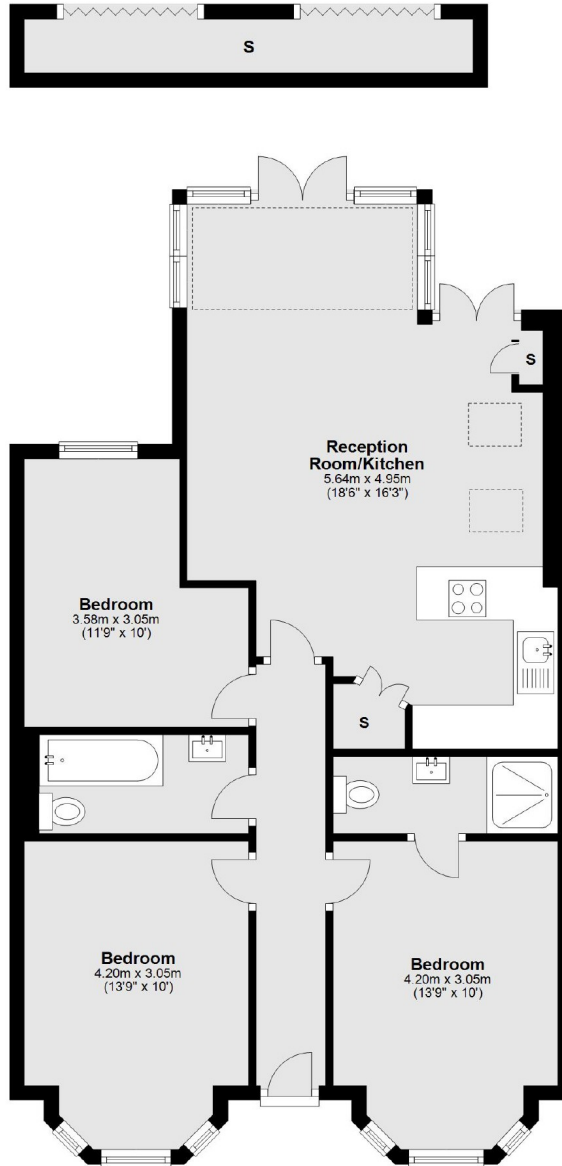
£3,250 Per week (pcm)

This well presented three bedroom property situated on a quiet residential street in the heart of Chiswick. The property comprises of an open plan living space with a fully fitted kitchen, full size bi-folding doors leading out onto a private garden, three double bedrooms and two bathrooms - one of which is en suite.

Coombe Road is a quiet residential street situated into the Glebe Estate and just a short walk away from the Chiswick High Road with its many boutique shops and restaurants. Turnham Green Station (District line) is 0.6 miles away and for motorists the M4 offers quick access in and out of the city.

- Three Double Bedrooms • Two Bathrooms • Open Plan Living • Modern Interior • Private Garden • Turnham Green Station •

Lower Ground Floor



Main area: Approx. 79.4 sq. metres (854.1 sq. feet)
Plus storage, approx. 4.5 sq. metres (48.0 sq. feet)

Fletchers Chiswick High Road Lettings
86 Chiswick High Road, Chiswick, London, W4 1SY
020 8742 4100
chiswicklettings@fletcherstates.com

Energy Rating: D. We aim to make our particulars both accurate and reliable. However they are not guaranteed; nor do they form part of an offer or contract. If you require clarification on any points then please contact us, especially if you're traveling some distance to view. Please note that appliances and heating systems have not been tested and therefore no warranties can be given as to their good working order.